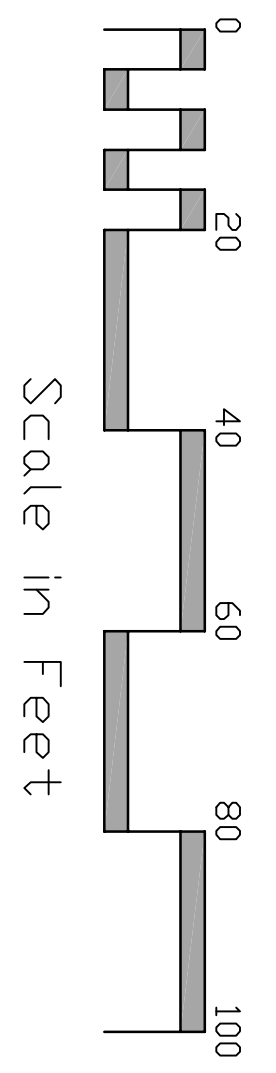
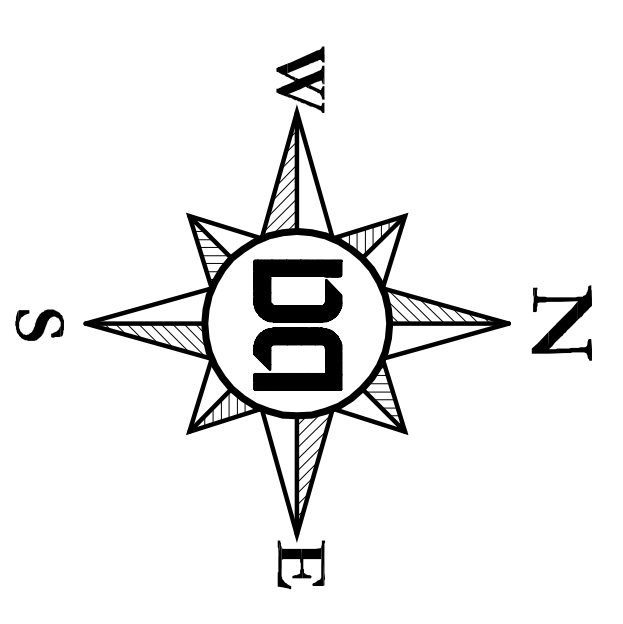


ALABAMA AVE
ROW Varies
34 ft pavement width

ALLEY #1200
25 ft ROW
14 ft pavement width

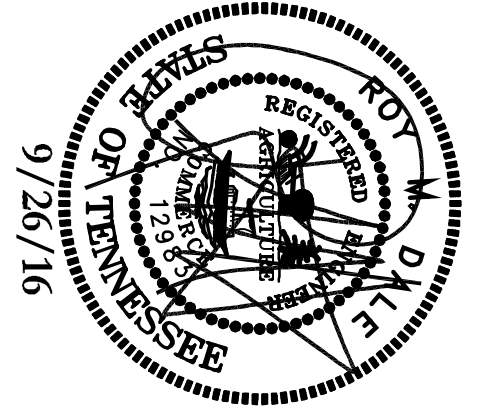
Existing Conditions



REVISIONS:

Rev
10/18/16

4305 and 4307 Alabama Avenue
Preliminary Specific Plan
Map 91-12 & Parcels 174 and 175
Nashville, Davidson County, Tennessee

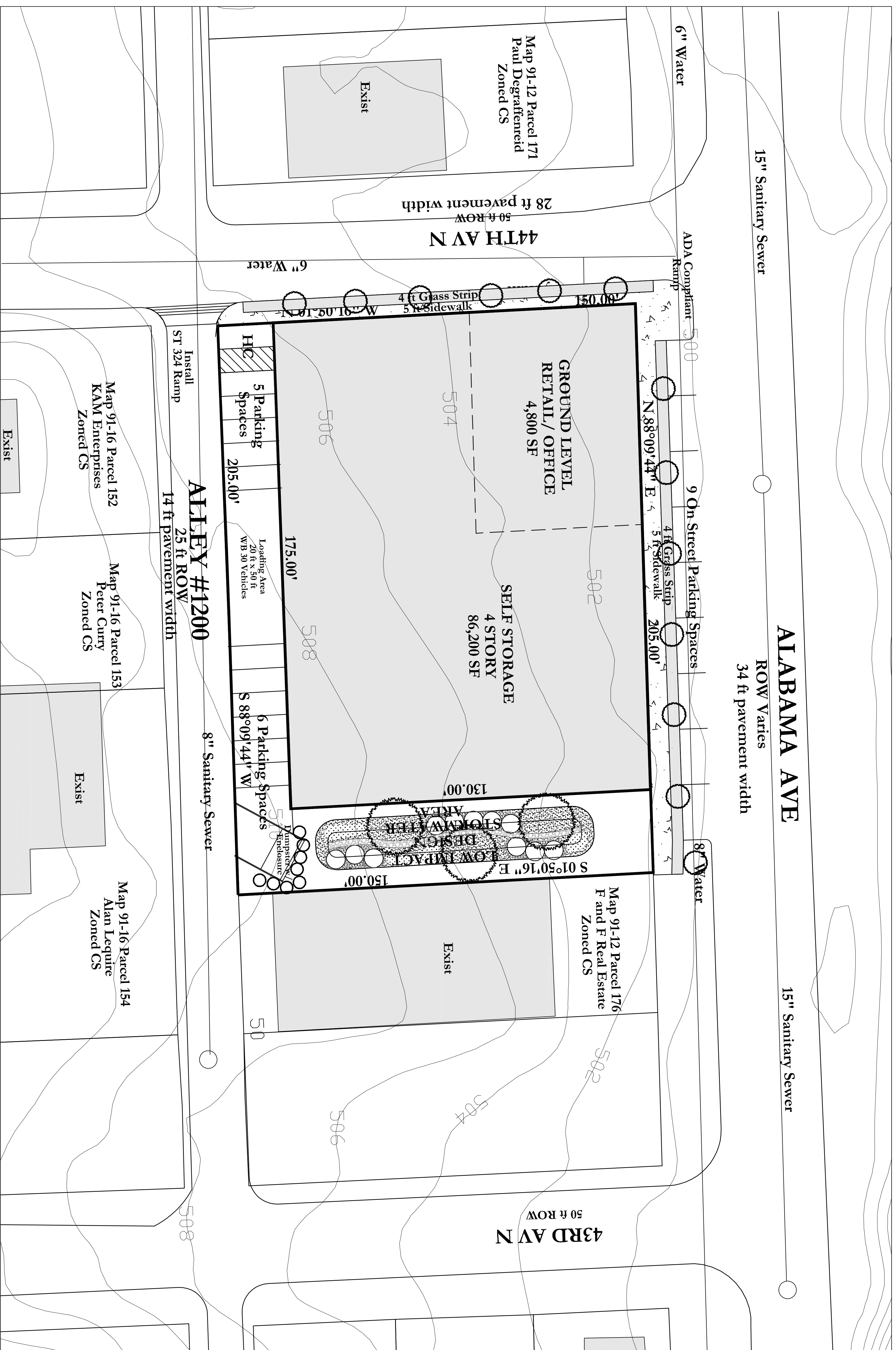


Dale & DD Associates
Consulting Civil Engineering
Land Planning & Zoning
Landscape Architecture

MPC Case Number
2016SP-082-001
DCA Project #16164
4305 & 4307 Alabama Ave SP
Sheet 2 of 3

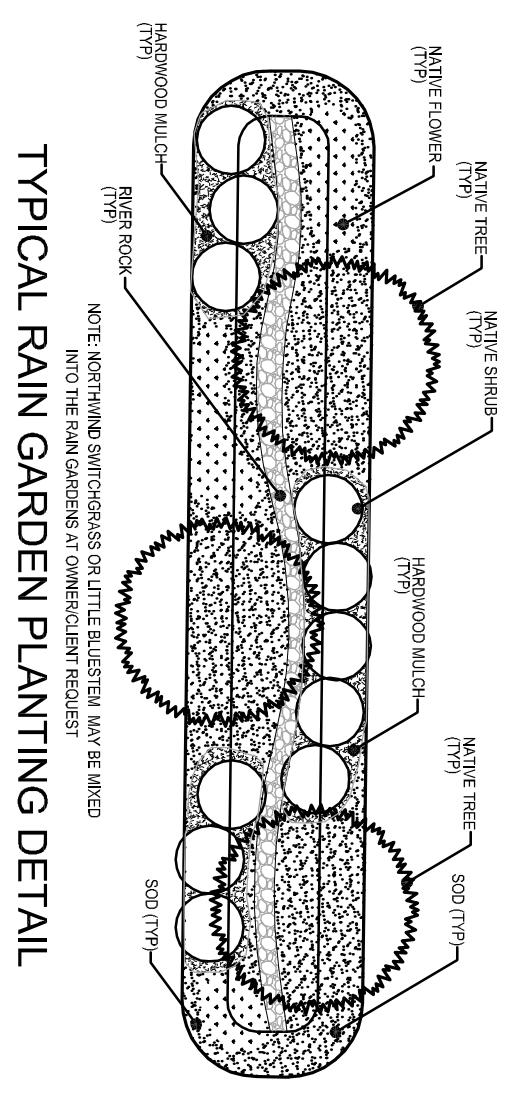
C2.0

516 Heather Place
Nashville, Tennessee 37204
(615) 297-5166

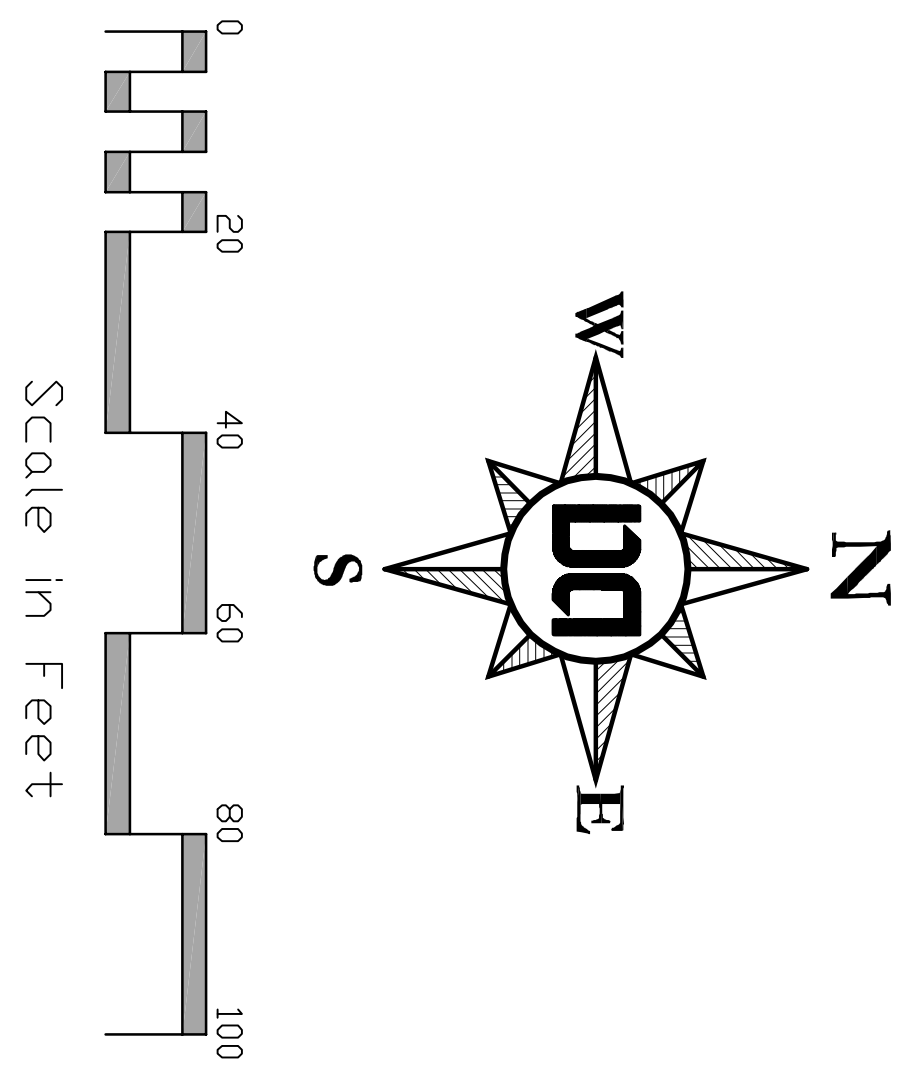


Stormwater Notes

1. This site is responsible for water quality and water quantity.
2. To provide the full water quality treatment per the Standards of Volume 5 of the Metro Nashville Stormwater Regulations. Design of these LID features will be provided during the final SP process.
3. Storm sewer system on this plan is shown schematically. Final design will be provided during the final SP process and will meet the requirements of the stormwater management manual.
4. This project will disturb less than 1 acre, therefore, a NOI will not be submitted to TDEC during final SP process.
5. This drawing is for illustration purposes to indicate the basic premise of the development. The final lot count and details of the plan shall be governed by the appropriate regulations at the time of final application.
6. An existing drainage/crossing stream crossing the property. Prior to the approval of a Final SP, the recently renewed/repaired stream crossing must come into compliance with the current regulations and requirements per the Metro Nashville Stormwater Manual.



SP Layout



Dale & DD Associates
 Consulting Civil Engineering
 Land Planning & Zoning
 Landscape Architecture

516 Heather Place
 Nashville, Tennessee 37204
 (615) 297-5366

MPC Case Number: 2016SP-082-001
 DCA Project #16164
 4305 & 4307 Alabama Ave SP

C3.0
 Sheet 3 of 3

4305 and 4307 Alabama Avenue
 Preliminary Specific Plan
 Map 91-12 & Parcels 174 and 175
 Nashville, Davidson County, Tennessee

REVISIONS:	
Rev:	10/18/16