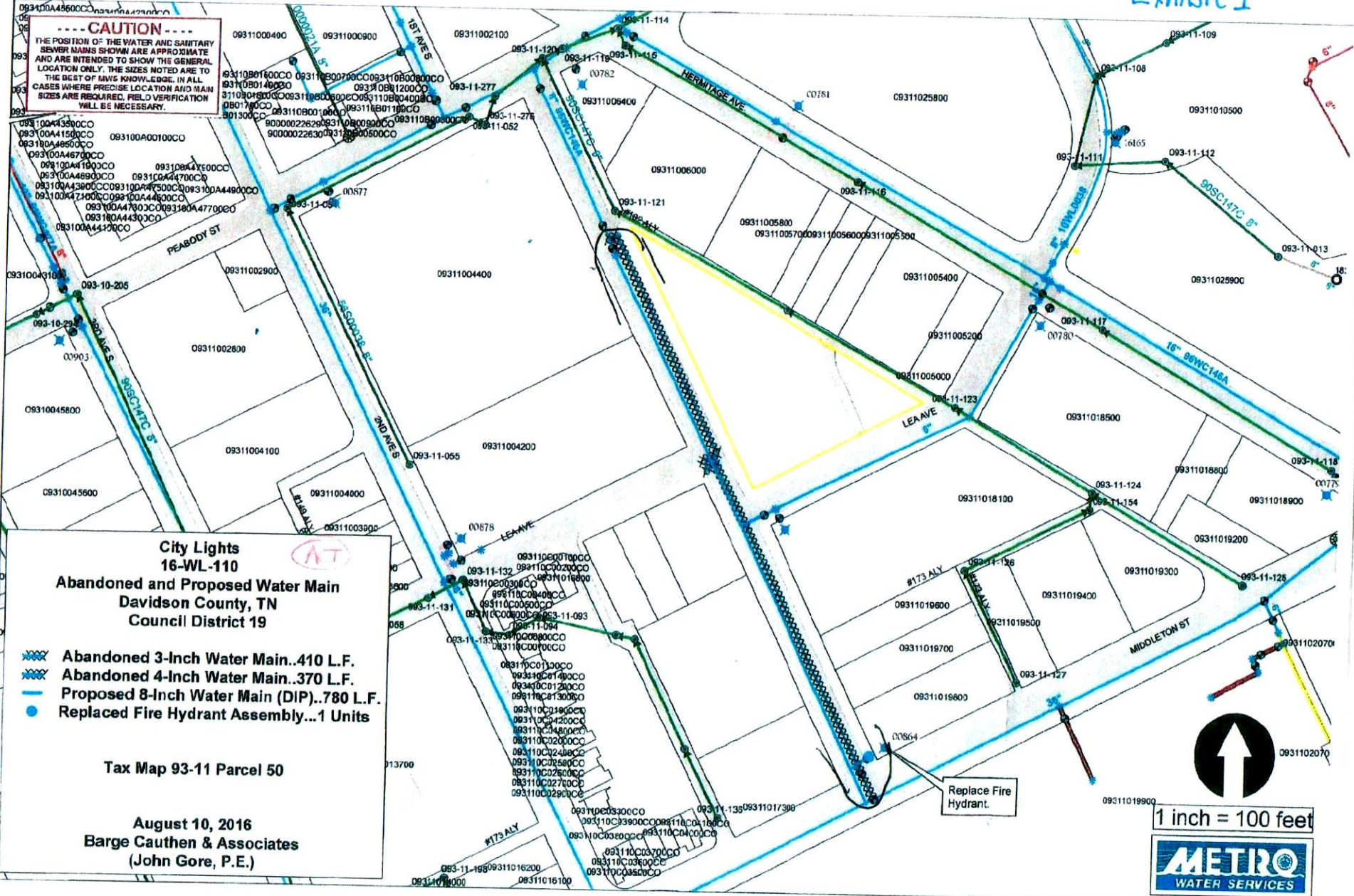


**CAUTION**  
 THE POSITION OF THE WATER AND SANITARY SEWER MAINS SHOWN ARE APPROXIMATE AND ARE INTENDED TO SHOW THE GENERAL LOCATION ONLY. THE SIZES NOTED ARE TO THE BEST OF MVS KNOWLEDGE. IN ALL CASES WHERE PRECISE LOCATION AND MAIN SIZES ARE REQUIRED, FIELD VERIFICATION WILL BE NECESSARY.



**City Lights  
 16-WL-110**

**Abandoned and Proposed Water Main  
 Davidson County, TN  
 Council District 19**

- Abandoned 3-Inch Water Main...410 L.F.
- Abandoned 4-Inch Water Main...370 L.F.
- Proposed 8-Inch Water Main (DIP)...780 L.F.
- Replaced Fire Hydrant Assembly...1 Units

**Tax Map 93-11 Parcel 50**

**August 10, 2016  
 Barge Cauthen & Associates  
 (John Gore, P.E.)**

**1 inch = 100 feet**

**METRO  
 WATER SERVICES**