

Exhibit 1

CAUTION
THE POSITION OF THE WATER AND SANITARY SEWER MAINS SHOWN ARE APPROXIMATE AND ARE INTENDED TO SHOW THE GENERAL LOCATION ONLY. THE SIZES NOTED ARE TO THE BEST OF MWS KNOWLEDGE. IN ALL CASES WHERE PRECISE LOCATION AND MAIN SIZES ARE REQUIRED, FIELD VERIFICATION WILL BE NECESSARY.

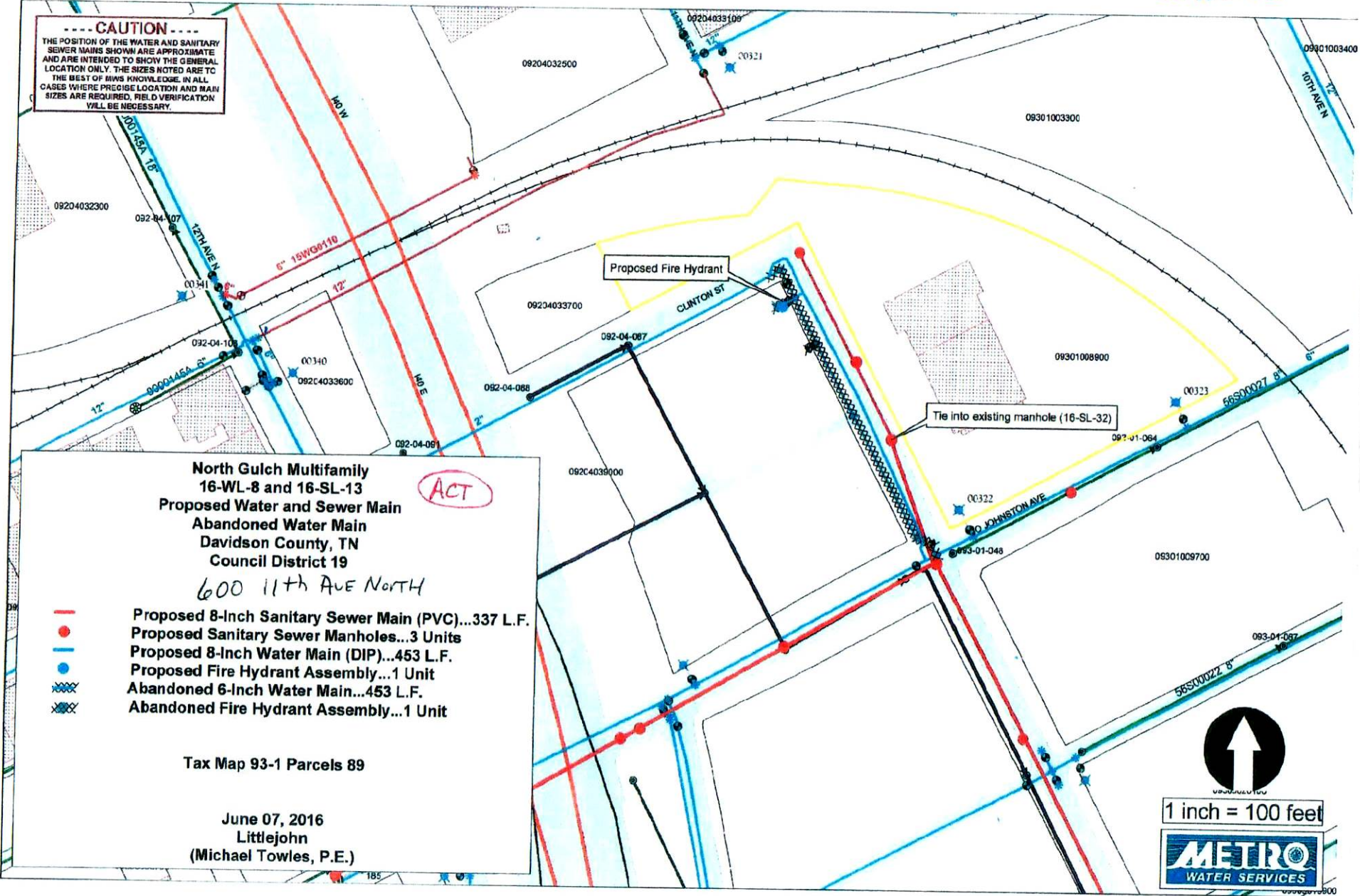
**North Gulch Multifamily
16-WL-8 and 16-SL-13**
Proposed Water and Sewer Main
 Abandoned Water Main
 Davidson County, TN
 Council District 19
 600 11th AVE NORTH

ACT

- Proposed 8-Inch Sanitary Sewer Main (PVC)...337 L.F.
- Proposed Sanitary Sewer Manholes...3 Units
- Proposed 8-Inch Water Main (DIP)...453 L.F.
- Proposed Fire Hydrant Assembly...1 Unit
- Abandoned 6-Inch Water Main...453 L.F.
- Abandoned Fire Hydrant Assembly...1 Unit

Tax Map 93-1 Parcels 89

June 07, 2016
 Littlejohn
 (Michael Towles, P.E.)



1 inch = 100 feet

