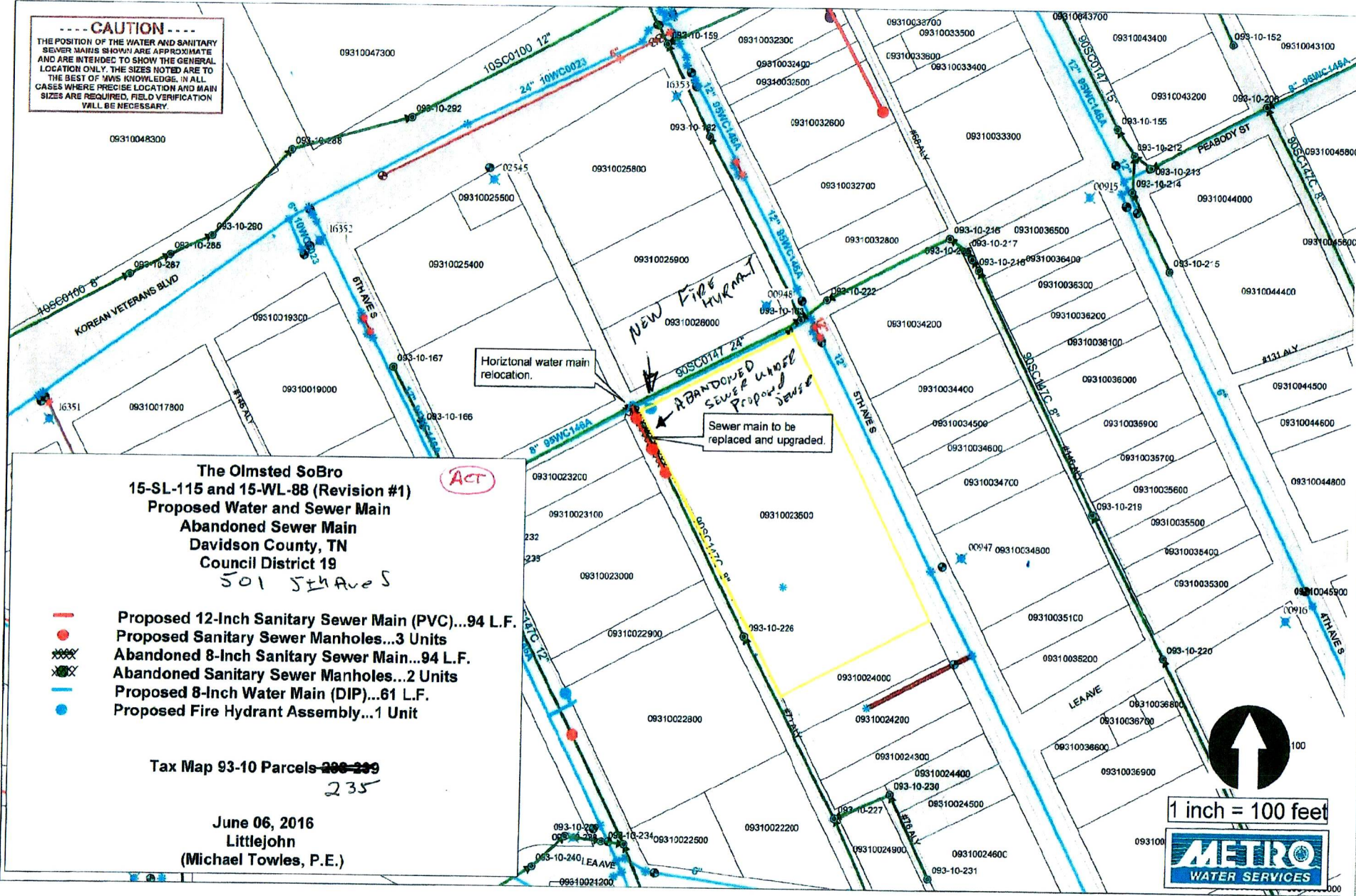


CAUTION
 THE POSITION OF THE WATER AND SANITARY SEWER MAINS SHOWN ARE APPROXIMATE AND ARE INTENDED TO SHOW THE GENERAL LOCATION ONLY. THE SIZES NOTED ARE TO THE BEST OF MWS KNOWLEDGE. IN ALL CASES WHERE PRECISE LOCATION AND MAIN SIZES ARE REQUIRED, FIELD VERIFICATION WILL BE NECESSARY.



The Olmsted SoBro
 15-SL-115 and 15-WL-88 (Revision #1)
 Proposed Water and Sewer Main
 Abandoned Sewer Main
 Davidson County, TN
 Council District 19
 501 5th Ave S

ACT

- Proposed 12-Inch Sanitary Sewer Main (PVC)...94 L.F.
- Proposed Sanitary Sewer Manholes...3 Units
- XXXX Abandoned 8-Inch Sanitary Sewer Main...94 L.F.
- XXXX Abandoned Sanitary Sewer Manholes...2 Units
- Proposed 8-Inch Water Main (DIP)...61 L.F.
- Proposed Fire Hydrant Assembly...1 Unit

Tax Map 93-10 Parcels ~~230-239~~
 235

June 06, 2016
 Littlejohn
 (Michael Towles, P.E.)



1 inch = 100 feet

