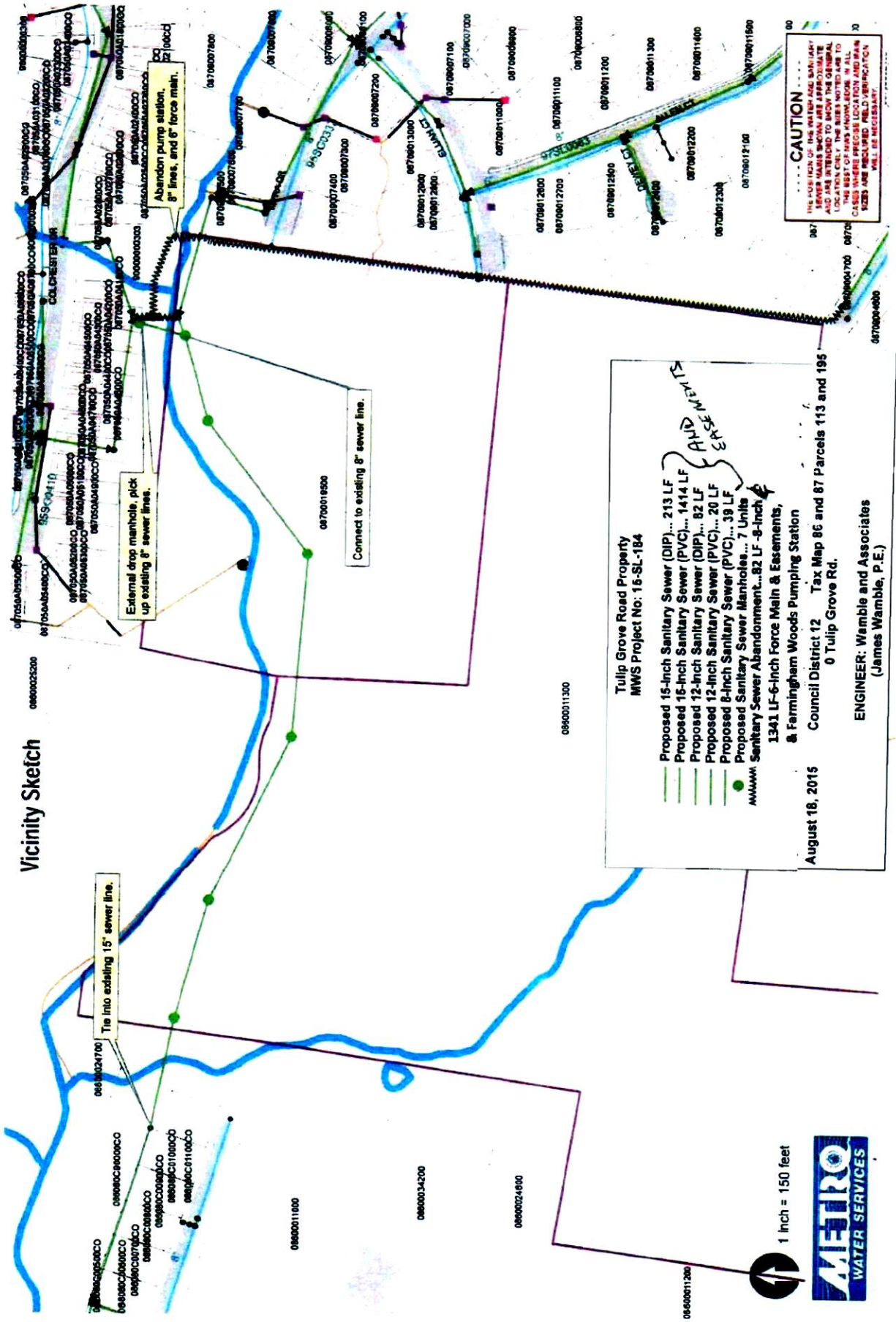


Exhibit 2



Vicinity Sketch

Tulip Grove Road Property
MWS Project No. 15-SL-184

- Proposed 15-inch Sanitary Sewer (DIP)... 213 LF
- Proposed 16-inch Sanitary Sewer (PVC)... 1414 LF
- Proposed 12-inch Sanitary Sewer (DIP)... 82 LF
- Proposed 12-inch Sanitary Sewer (PVC)... 20 LF
- Proposed 8-inch Sanitary Sewer (PVC)... 39 LF
- Proposed Sanitary Sewer Manholes... 7 Units
- Sanitary Sewer Abandonment... 82 LF - 8-inch

1341 LF - 6-inch Force Main & Easements,
 & Farmingham Woods Pumping Station

August 18, 2015
 Council District 12 Tax Map 86 and 87 Parcels 113 and 195
 0 Tulip Grove Rd.

ENGINEER: Wamble and Associates
 (James Wamble, P.E.)

1 inch = 150 feet

CAUTION

THE PUBLIC IS ADVISED THAT THE SEWER MAINS SHOWN ARE APPROXIMATE AND ARE INTENDED TO SHOW THE GENERAL LOCATION ONLY. THE EXACT LOCATION AND DEPTH SHALL BE DETERMINED BY FIELD SURVEY. FIELD VERIFICATION WILL BE NECESSARY.