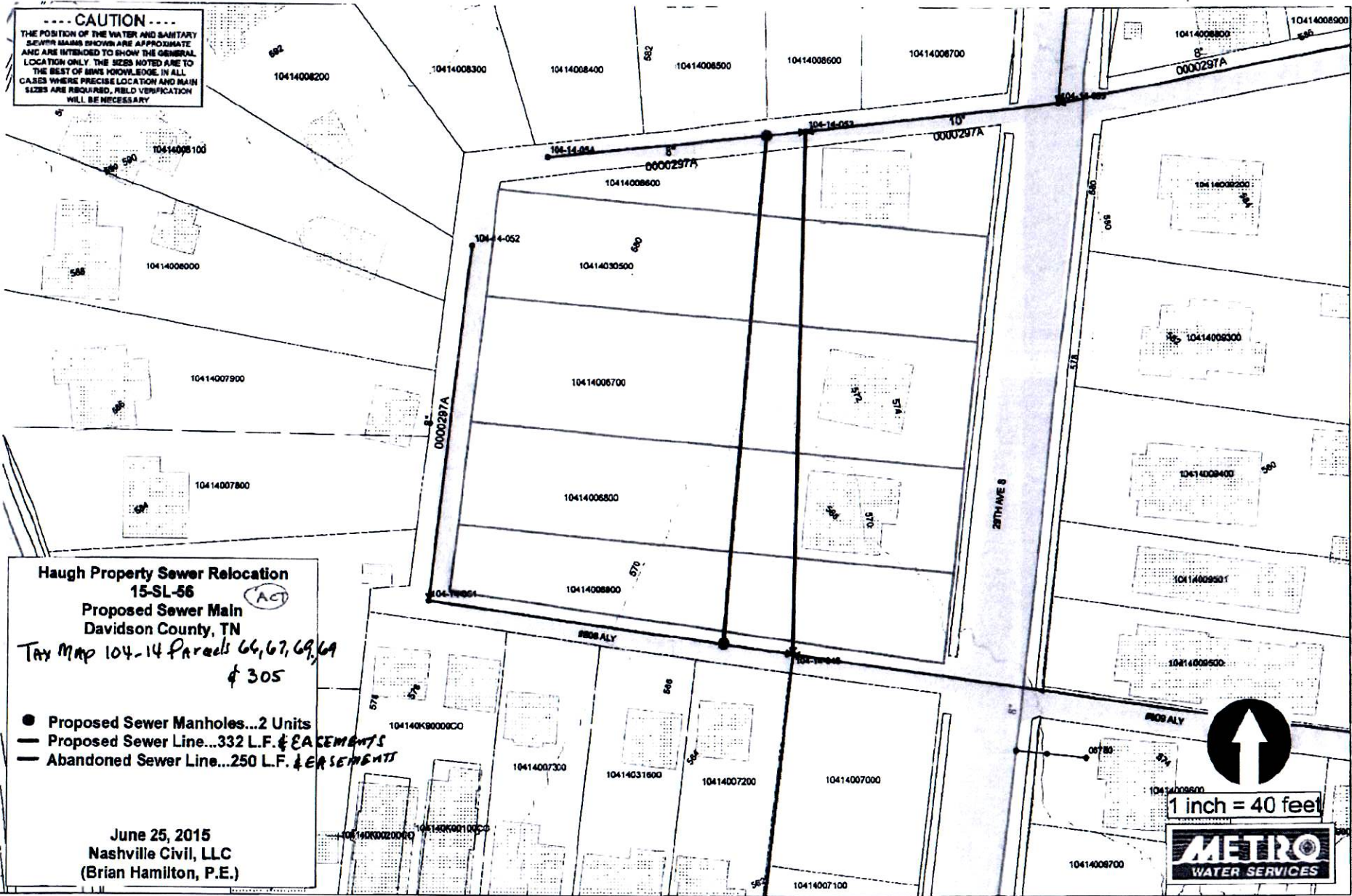


---- CAUTION ----  
THE POSITION OF THE WATER AND SANITARY SEWER MAINS SHOWN ARE APPROXIMATE AND ARE INTENDED TO SHOW THE GENERAL LOCATION ONLY. THE SIZES NOTED ARE TO THE BEST OF OUR KNOWLEDGE. IN ALL CASES WHERE PRECISE LOCATION AND MAIN SIZES ARE REQUIRED, FIELD VERIFICATION WILL BE NECESSARY.



**Haugh Property Sewer Relocation**  
**15-SL-56** (ACT)  
**Proposed Sewer Main**  
**Davidson County, TN**  
*Tax Map 104-14 Parcels 66, 67, 69, 69A*  
*\$ 305*

- Proposed Sewer Manholes...2 Units
- Proposed Sewer Line...332 L.F. & EASEMENTS
- Abandoned Sewer Line...250 L.F. & EASEMENTS

June 25, 2015  
Nashville Civil, LLC  
(Brian Hamilton, P.E.)

1 inch = 40 feet



**METRO**  
WATER SERVICES

**List of Parcels****Haugh Property Sewer Relocation Project**

<b><u>Address</u></b>	<b><u>Tax Map &amp; Parcel</u></b>
2209 29 <sup>th</sup> Avenue South	10414006600
2211 29 <sup>th</sup> Avenue South	10414030500
2213 29 <sup>th</sup> Avenue South	10414006700
2215 29 <sup>th</sup> Avenue South	10414006800
2217 29 <sup>th</sup> Avenue South	10414006900