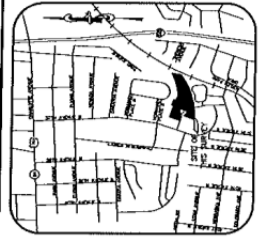
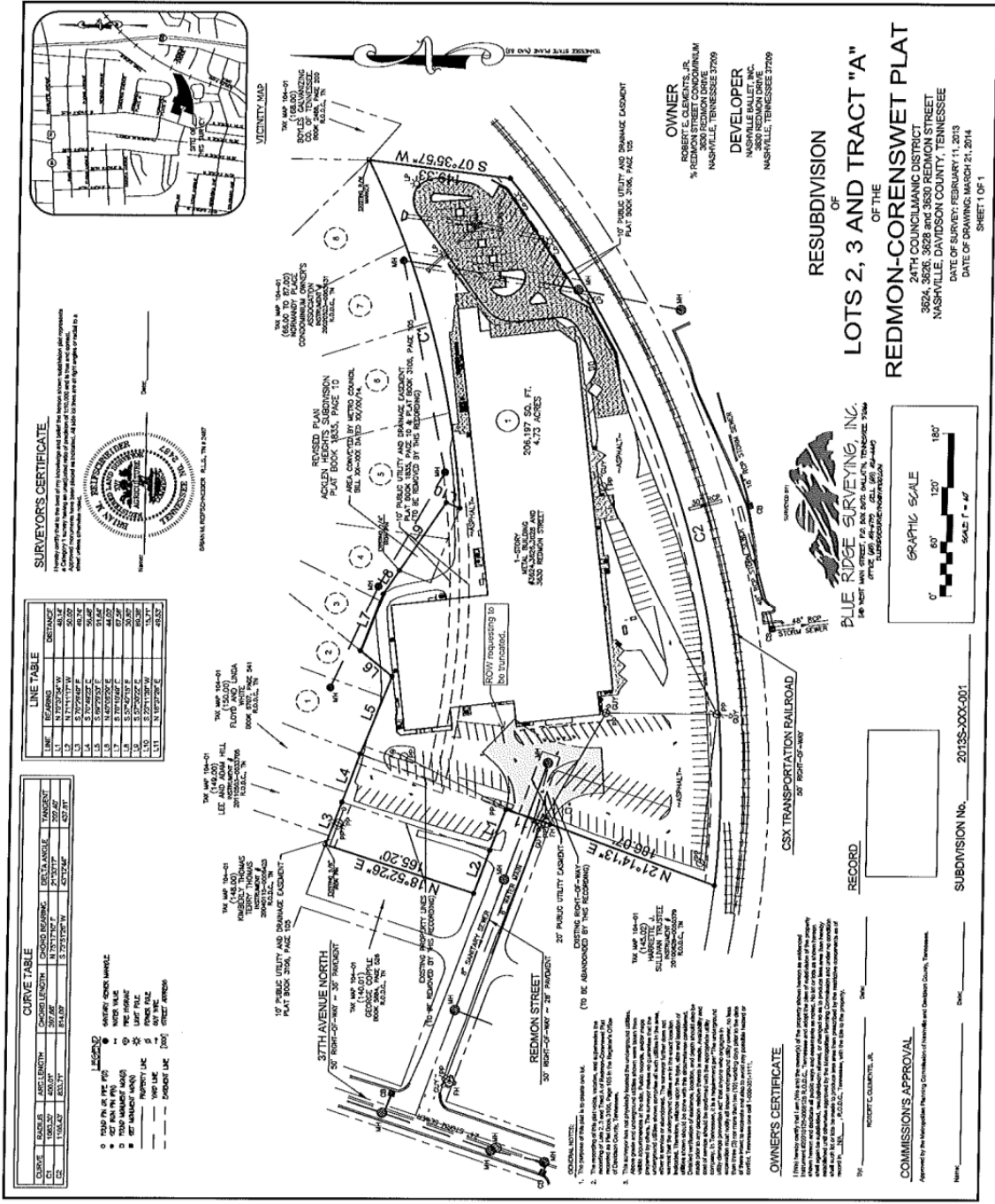


Proposal No.: 2015M-005AB-001
Map 104-1
Council District No. 24



SURVEYORS CERTIFICATE
 I, the undersigned, do hereby certify that the above and foregoing plat was prepared by me or under my direct supervision and that I am a duly licensed and qualified Surveyor in the State of Tennessee and that the above and foregoing plat is a true and correct representation of the facts as shown by the field notes and other data furnished to me by the parties to this survey.

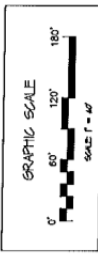
[Signature]
 DATE: FEBRUARY 11, 2014

LINE TABLE

LINE	BEARINGS	DISTANCE
1.1	N 89°29'24" W	48.2
1.2	S 17°07'59" W	68.2
1.3	S 17°07'59" W	68.2
1.4	S 17°07'59" W	68.2
1.5	S 17°07'59" W	68.2
1.6	S 17°07'59" W	68.2
1.7	S 17°07'59" W	68.2
1.8	S 17°07'59" W	68.2
1.9	S 17°07'59" W	68.2
1.10	S 17°07'59" W	68.2
1.11	S 17°07'59" W	68.2

CURVE TABLE

CURVE NO.	CHORD BEARING	CHORD LENGTH	DELTA ANGLE	TANGENT DISTANCE
1	N 89°29'24" W	48.2	90°	48.2
2	S 17°07'59" W	68.2	90°	68.2
3	S 17°07'59" W	68.2	90°	68.2
4	S 17°07'59" W	68.2	90°	68.2
5	S 17°07'59" W	68.2	90°	68.2
6	S 17°07'59" W	68.2	90°	68.2
7	S 17°07'59" W	68.2	90°	68.2
8	S 17°07'59" W	68.2	90°	68.2
9	S 17°07'59" W	68.2	90°	68.2
10	S 17°07'59" W	68.2	90°	68.2
11	S 17°07'59" W	68.2	90°	68.2



RESUBDIVISION
 OF THE
LOTS 2, 3 AND TRACT "A"
 OF THE
REDMON-CORENSWET PLAT
 24TH COUNCILMANIC DISTRICT
 3824, 3828, 3828 AND 3830 REDMON STREET
 NASHVILLE, DAVIDSON COUNTY, TENNESSEE
 DATE OF SURVEY: FEBRUARY 11, 2014
 SHEET 1 OF 1

PLUE RIDGE SURVEYING, INC.
 148 NORTH CENTRAL AVENUE
 NASHVILLE, TENNESSEE 37203
[Signature]
 DATE: FEBRUARY 11, 2014

OWNER
 ROBERT E. CLEMENTS, JR.
 1/2 REDMON STREET CONDOMINIUM
 NASHVILLE, TENNESSEE 37209

DEVELOPER
 NASHVILLE BALLETT, INC.
 NASHVILLE, TENNESSEE 37209

OWNERS CERTIFICATE

I, the undersigned, do hereby certify that I am the owner(s) of the property shown herein and that I am a duly licensed and qualified owner in the State of Tennessee and that the above and foregoing plat is a true and correct representation of the facts as shown by the field notes and other data furnished to me by the parties to this survey.

[Signature]
 DATE: FEBRUARY 11, 2014

RECORD _____
 SUBDIVISION No. 2015S-005AB-001
 DATE _____

COMMISSIONS APPROVAL

Agreement by the Majoritarian Planning Commission of Davidson County, Tennessee.

DATE: _____

ADDITIONAL NOTES:

- The purpose of this plat is to create lots 1-11.
- Lot 1-11 are shown with dimensions and bearings as shown on this plat and as recorded in the Public Records Office of Davidson County, Tennessee, in the Public Records Book 1008, Page 1083.
- The surveyor has not physically located the corner monuments shown on this plat. The monument locations are based on the information provided by the parties to this survey. The surveyor is not responsible for the accuracy of the monument locations shown on this plat. The surveyor is not responsible for the accuracy of the monument locations shown on this plat.
- The surveyor is not responsible for the accuracy of the monument locations shown on this plat. The surveyor is not responsible for the accuracy of the monument locations shown on this plat.
- The surveyor is not responsible for the accuracy of the monument locations shown on this plat. The surveyor is not responsible for the accuracy of the monument locations shown on this plat.