



2015M-008EN-001
Thompson Hotel Aerial and Underground Encroachments

270

LAUREL ST

PINE ST

11TH AVE S

12TH AVE S

DIVISION ST

MANSION ST

OVERTON ST

GLEAVES ST

#230 ALY

DTC

DTC

CF

I40 E

I40 W

I40 RAMP

I40 RAMP

C900 C275 C284 C283 C268 C285 C143 C253 C057 C286 C005 C015 C003 C009 C102 C288 C132 C289 C012 C018 C100 C458 C224 C269 C209 C050 C239 C001 C208 C283 C268 C285 C143 C253 C005 C015 C003 C009 C287 C006 C011 C289 C012 C018 C100 C458

C001 C127 G129 C0059 439 C166 C087 C130 C016 C090 C090 C015 C167 C169 C170 C164 C204 C013 C262 C203 C012 C153 C801 C011 C389 C406 C900 C400 C218 C205 C444 C445 C381 C233 C373 C393 C378 C400 G411 C403 C407 C408 C135 C136 C117 C389 C440 C190 C019 C174 C021 C022 C177 C157 C175 C176 C099 C194 C01 C069 C187 C183 C179 C189 C033 C413 C139 C93 C035 C188 G143 C027 C039 G036 C034 G143 C801 C181 G074 C190 C190 C029 C028

D900 D005 D012 D020 D004 D019 D013

SP

584

050

302

082

083

085

086

087

103

303

304

578

090

091

579

579

548

104

105

580

580

581

582

583

584

585

586

587

588

589

590

591

592

593

594

595

596

597

598

599

600

601

602

603

604

605

606

607

608

609

610

611

612

613

614

615

616

617

618

619

620

621

622

623

624

625

626

627

628

629

630

631

632

633

634

635

636

637

638

639

640

641

642

643

644

645

646

647

648

649

650

651

652

653

654

655

656

657

658

659

660

661

662

663

664

665

666

667

668

669

670

671

672

673

674

675

676

677

678

679

680

681

682

683

684

685

686

687

688

689

690

691

692

693

694

695

696

697

698

699

700

701

702

703

704

705

706

707

708

709

710

711

712

713

714

715

716

717

718

719

720

721

722

723

724

725

726

727

728

729

730

731

732

733

734

735

736

737

738

739

740

741

742

743

744

745

746

747

748

749

750

751

752

753

754

755

756

757

758

759

760

761

762

763

764

765

766

767

768

769

770

771

772

773

774

775

776

777

778

779

780

781

782

783

784

785

786

787

788

789

790

791

792

793

794

795

796

797

798

799

800

801

802

803

804

805

806

807

808

809

810

811

812

813

814

815

816

817

818

819

820

821

822

823

824

825

826

827

828

829

830

831

832

833

834

835

836

837

838

839

840

841

842

843

844

845

846

847

848

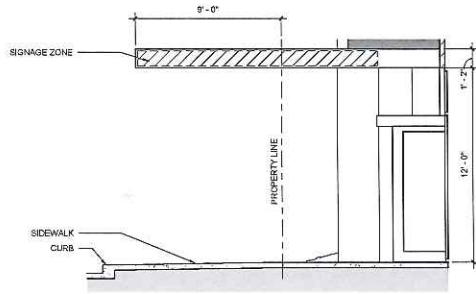
849

850

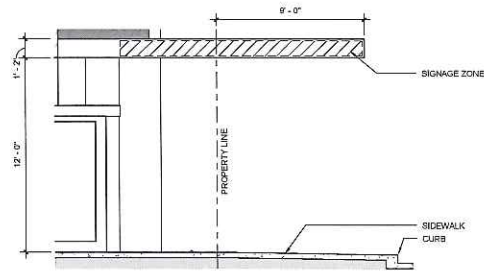
851

852

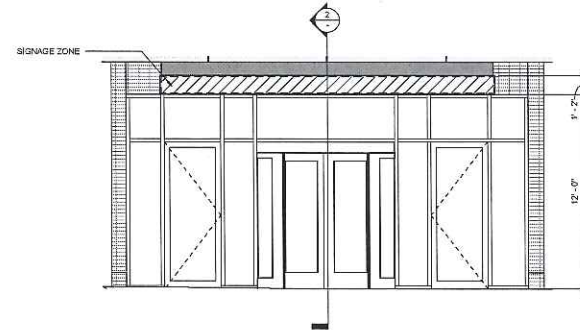
853



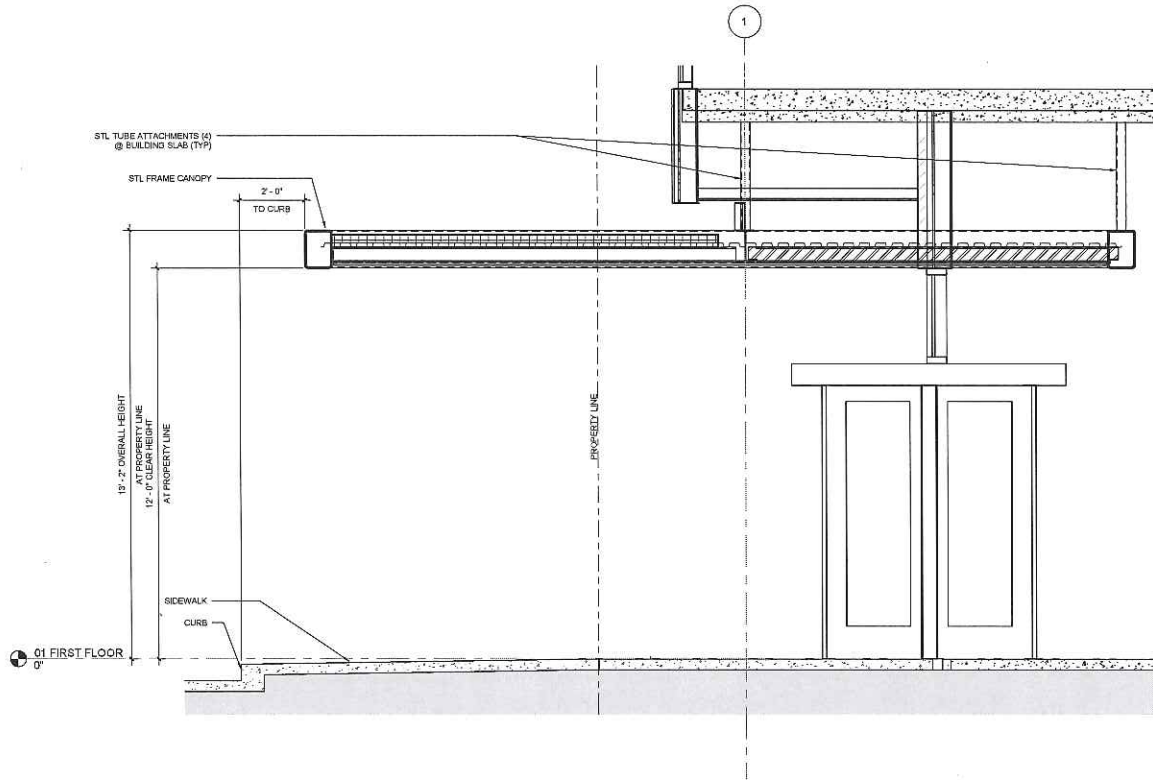
5 CANOPY - RIGHT SIDE ELEVATION
1/4" = 1'-0"
0 2 4 8



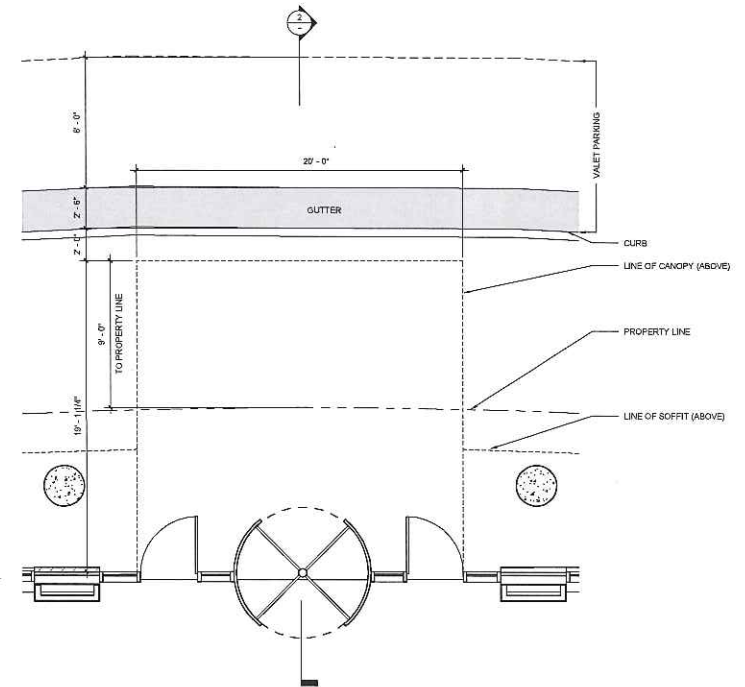
4 CANOPY - LEFT SIDE ELEVATION
1/4" = 1'-0"
0 2 4 8



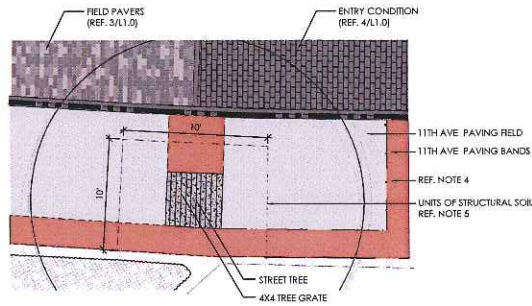
3 CANOPY - FRONT ELEVATION
1/4" = 1'-0"
0 2 4 8



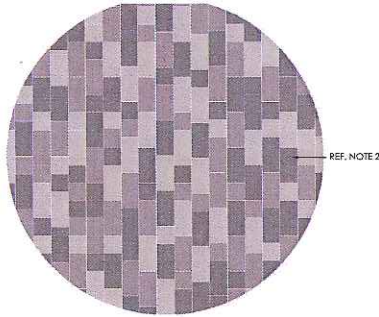
2 SECTION @ CANOPY
1/2" = 1'-0"
0 2 4 8



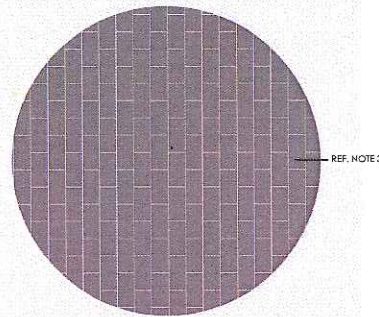
1 ENLARGED PLAN @ ENTRY
1/4" = 1'-0"
0 2 4 8



2 FIELD CONDITION/11TH AVE STANDARD ENLARGEMENT
1/4"



3 FIELD CONDITION CONCRETE PAVER ENLARGEMENT
1:1"



4 MAIN ENTRY SPECIALTY PAVER ENLARGEMENT
1:1"

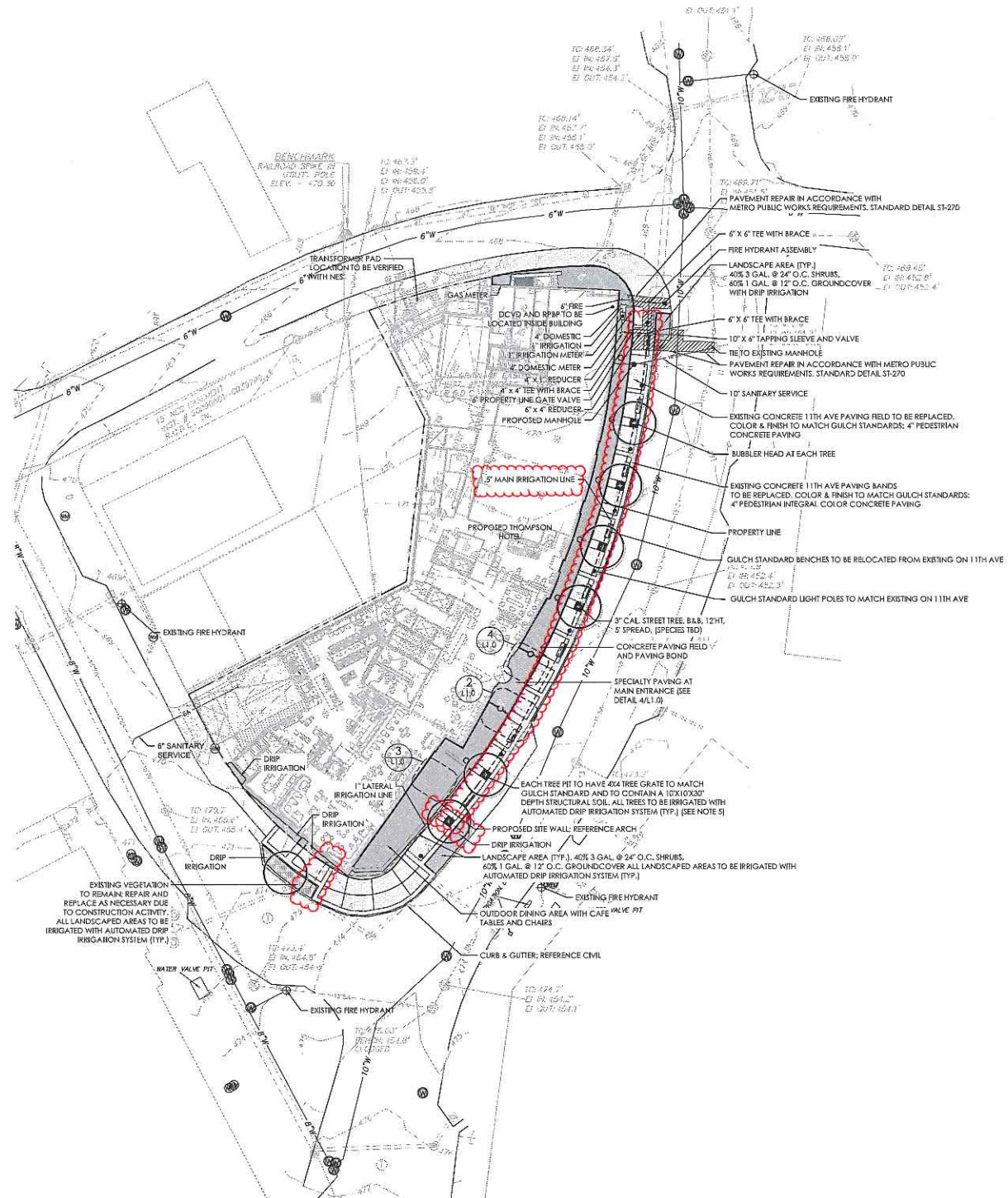
NOTES

- ALL LANDSCAPED AREAS TO BE IRRIGATED.
- FIELD CONDITION CONCRETE PAVERS (SEE DETAIL 3/L1.0) TO HAVE THE FOLLOWING:

COLORS	SIZES
DARK GRAY (50%)	4"X8" PAVERS (75%)
MEDIUM GRAY (30%)	4"X4" PAVERS (25%)
LIGHT GRAY (20%)	
- SPECIALTY CONDITION CONCRETE PAVERS AT MAIN ENTRANCE (SEE DETAIL 4/L1.0) TO HAVE THE FOLLOWING:

COLORS	SIZES
DARK GRAY (100%)	4"X8" PAVERS (100%)
- DOUBLE BAND OF DARK GRAY 4"X8" PAVERS TO BE LAID FLUSH & PERPENDICULAR TO FIELD CONDITION PAVERS WHERE FIELD CONDITION PAVERS MEET 11TH AVENUE STANDARD CONDITIONS. SINGLE BAND OF DARK GRAY 4"X8" PAVERS TO BE LAID FLUSH & PERPENDICULAR ALONG PERIMETER OF BUILDING WHERE BUILDING MEETS FIELD CONDITION PAVERS. (SEE DETAIL 1/L1.0)
- 10'X10'X30" STRUCTURAL SOIL FILL. SUBMIT SAMPLE FOR APPROVAL BY LANDSCAPE ARCHITECT PRIOR TO INSTALLATION; REF. PLANS FOR EXTENTS OF SOIL.

1 THOMPSON HOTEL IN THE GULCH
ENCROACHMENT PLAN



HASTINGS
ARCHITECTURE ASSOCIATES, LLC
ARCHITECTURE • INTERIORS
PLANNING • SUSTAINABILITY
127 THIRD AVENUE SOUTH
NASHVILLE, TN 37203
P 615.329.1399
F 615.329.1486
WWW.HASTINGS
© 2014

ENCROACHMENT
PERMIT

**HODGSON
DOUGLAS**
landscape architecture
planning • urban design
128 3rd Ave. South
Nashville, Tennessee 37203
T 615.327.4447 F 615.321.3004
www.hodgsondouglas.com

THE BERKSHIRE COMPANY, INC.



MarketStreet
ENTERPRISES

THOMPSON NASHVILLE IN THE GULCH
401 11TH AVE SOUTH | NASHVILLE | TN

REVISION INFORMATION

NOT FOR CONSTRUCTION

141712 2015.02.25
ENCROACHMENT PLAN

L1.0