

## **Geographic Boundaries of Metropolitan County Council Districts 28, 29 and 32**

### **Council District 28**

Beginning at the intersection of Interstate 24 and Harding Place, proceed northeast along Harding Place to the intersection with Ezell Pike, then proceed southeast along Ezell Pike to the intersection with the Louisville and Nashville Railroad, then proceed southeast along the Louisville and Nashville Railroad to the intersection with a spur of the Louisville and Nashville Railroad, then proceed northeast along the spur of the Louisville and Nashville Railroad to the intersection with Mill Creek, then proceed northeast along Mill Creek to the intersection with Franklin Branch, then proceed south along Franklin Branch to the intersection with the Louisville and Nashville Railroad, then proceed east along the Louisville and Nashville Railroad to the intersection with Mullins Drive, then proceed northeast along Mullins Drive to the intersection with Bush Road, then proceed northeast along Bush Road to the intersection with Harding Place, then proceed southwest along Harding Place to the intersection with Donelson Pike, then proceed north along Donelson Pike to the intersection with Murfreesboro Pike, then proceed southeast along Murfreesboro Pike to the intersection with Rural Hill Road, then proceed south along Rural Hill Road to the intersection with Rice Road, then proceed northwest along Rice Road to the intersection with Edge O Lake Drive, then proceed southeast along Edge O Lake Drive to the intersection with Pebble Creek Drive, then proceed west along Pebble Creek Drive to the intersection with Rader Ridge Road, then proceed south along Rader Ridge Road to the intersection with Franklin Branch, then proceed southeast along Franklin Branch for approximately 2,500 feet, then proceed northeast approximately 620 feet to the intersection with Bridgecrest Drive, then proceed southeast along Bridgecrest Drive to the intersection with Rural Hill Road, then proceed south along Rural Hill Road to the intersection with Mount View Road, then proceed northwest along Mount View Road to the intersection with Hickory Hollow Parkway, then proceed northwest along Hickory Hollow Parkway to the intersection with Antioch Pike, then proceed west along Antioch Pike to the intersection with Blue Hole Road, then proceed south along Blue Hole Road to the intersection with Interstate 24, then proceed northwest along Interstate 24 to the beginning point, the intersection with Harding Place.

### **Council District 29**

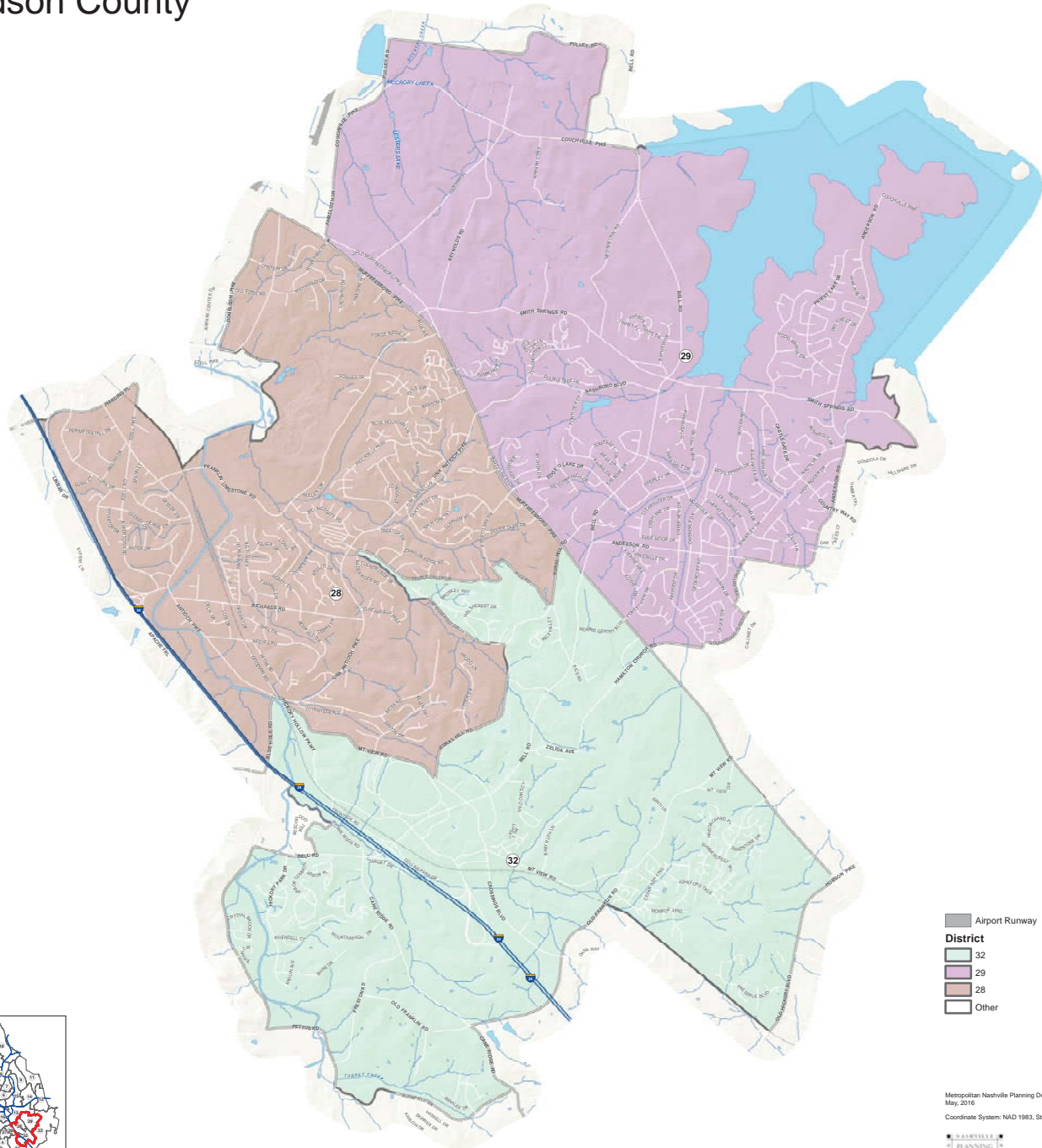
Beginning at the intersection of Murfreesboro Pike and Town Park Drive, proceed northeast along Town Park Drive to the intersection with Old Murfreesboro Pike, then proceed northwest along Old Mufreesboro Pike to the intersection with McCrory Creek Road, then proceed north along McCrory Creek Road to the intersection with Pulley Road, then proceed east along Pulley Road to the intersection with Pleasant Hill Road, then proceed south along Pleasant Hill Road to the intersection with Couchville Pike, then proceed east along Couchville Pike to the intersection with Bell Road, then proceed east approximately 450 feet to the intersection with the eastern shoreline of the J Percy Priest Reservoir, then proceed east along the shoreline of the J Percy Priest Reservoir to the intersection with an unnamed road within the Smith Springs Public Use Area, then proceed southeast along the unnamed road to the intersection with

Smith Springs Road, then proceed southeast along Smith Springs Road to the intersection with a private drive for Smith Springs Townhomes, then proceed west along the private drive to the intersection with Anderson Road, then proceed south along Anderson Road to the intersection with Fieldstone Drive, then proceed south along Fieldstone Drive to the intersection with Lu Ann Drive, then proceed southeast along Lu Ann Drive to the intersection with Roundwood Forest Drive, then proceed southwest along Roundwood Forest Drive to the intersection with Owendale Drive, then proceed south along Owendale Drive to the intersection with Hamilton Church Road, then proceed west along Hamilton Church Road to the intersection with Murfreesboro Pike, then proceed northwest along Murfreesboro Pike to the beginning point, the intersection with Town Park Drive.

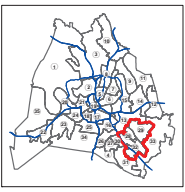
### Council District 32

Beginning at the intersection of Rader Ridge Road and Pebble Creek Drive, proceed southeast along Pebble Creek Drive to the intersection with Edge O Lake Drive, then proceed northwest along Edge O Lake Drive to the intersection with Rice Road, then proceed northeast along Rice Road to the intersection with Rural Hill Road, then proceed north along Rural Hill Road to the intersection with Murfreesboro Pike, then proceed southeast along Murfreesboro Pike to the intersection with Old Hickory Boulevard, then proceed southwest along Old Hickory Boulevard to the intersection with the Louisville and Nashville Railroad, then proceed northwest along the Louisville and Nashville Railroad to the intersection with Old Franklin Road, then proceed southwest along Old Franklin Road to the intersection with Cane Ridge Road, then proceed south along Cane Ridge Road to the intersection with Blairfield Drive, then proceed southwest along Blairfield Drive to the intersection with Pettus Road, then proceed north along Pettus Road to the intersection with Blue Hole Road, then proceed northwest along Blue Hole Road to the intersection with Bell Road, then proceed east along Bell Road to the intersection with Cedar Point Parkway, then proceed north along Cedar Point Parkway to the intersection with Collins Creek, then proceed northwest along Collins Creek to the intersection with Mill Creek, then proceed north along Mill Creek to the intersection with Interstate 24, then proceed northwest along Interstate 24 to the intersection with Blue Hole Road, then proceed north along Blue Hole Road to the intersection with Antioch Pike, then proceed east along Antioch Pike to the intersection with Hickory Hollow Parkway, then proceed south along Hickory Hollow Parkway to the intersection with Mount View Road, then proceed southeast along Mount View Road to the intersection with Rural Hill Road, then proceed north along Rural Hill Road to the intersection with Bridgecrest Drive, then proceed west along Bridgecrest Drive to a point approximately 120 feet southeast of the intersection with Bridge Crest Lane, then proceed southwest approximately 620 feet to the intersection with Franklin Branch, then proceed northwest along Franklin Branch to the intersection with Rader Ridge Road, then proceed north along Rader Ridge Road to the beginning point, the intersection with Pebble Creek Drive.

# Council Districts 28, 29, and 32 Davidson County



- Airport Runway
- District**
- 32
- 29
- 28
- Other



Metropolitan Nashville Planning Department  
May, 2016  
Coordinate System: NAD 1983, State Plane TN (ft)

