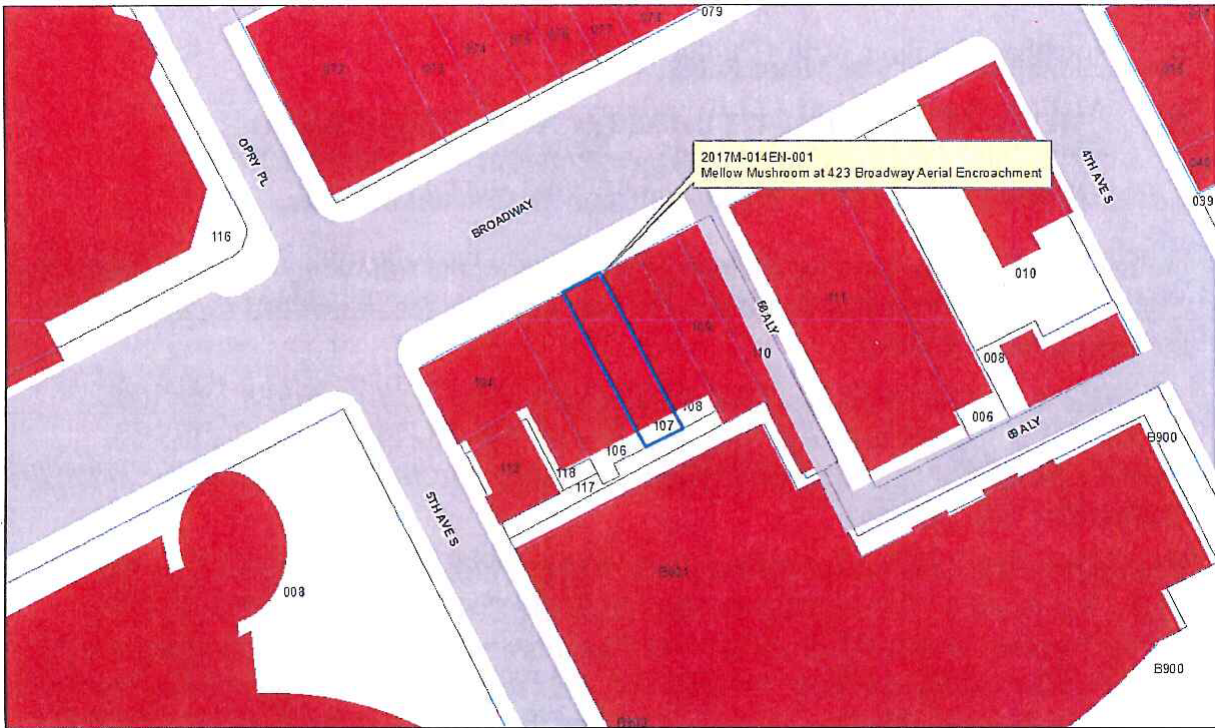


Proposal No. 2017M-014EN-001



Scope of Work
Don Bell Signs to fabricate & install:
Don Bell Signs to fabricate & install:
(1) DJF LED & neon, externally illuminated blade sign, as shown.

Notes:
All hardware to be non-corrosive.
PRIMARY ELECTRIC BY OTHERS.

Electrical Requirements:
(2) 20amp circuits @ 120v

Material List:
Blue Neon
Green Neon
White Neon
Red Neon
Yellow Neon
Red Neon
White Neon
Blue Neon
Blue Neon
Cabinet
Conc. Aluminum
Paint: PMS 453C Red, 5533C Green, 3253C Green, w/ 3M Blue/over, 3M Apple Green spray paint (only applied to faces)
Yellow Neon
Blue Neon
Green Neon
Red Quick Start LED Tubes
Flows to turn on from left to right, then turn off and recycle (with minimum 3 second interval between stages)

Designed per IRC - 2012 including all modifications made by the State of Tennessee

Wind Loads:
Risk Category: II
Basic Wind Speed: 115 mph
Nominal Wind Speed: 90 mph
Wind Exposure: B
ASCE Force Coef.: 1.8
Gust Factor: 1.85

Roof Loads:
Ground Snow Load: 10 psf
Snow Exposure Factor: C-1
Snow Load Importance: I-1
Thermal Factor: D-1.0

Exterior Components designed in accordance with applicable provisions of the ASCE 7-10

MELLOW MUSHROOM

Broadway Nashville, TN

Project #: 1600531 R6
Date: 10.4.16
Owner: M. De Bolt

R1 (10.18.16) MD
R2 (10.24.16) MD
R3 (11.9.16) MD
R4 (11.15.16) MD
R5 (11.15.16) MD
R6 (11.16.16) MD
R7 (12.13.16) MD

120 Volt
 277 Volt

SHEET 1

Mellow Mushroom

423 Broadway
Nashville, TN
Frank Boiano
As Noted
Adobe Illustrator CS6

PRIMARY ELECTRIC BY OTHERS.

DON BELL

Professional Engineer
TN P.E. License #15559

Note: This design pending engineering.

Elevation of D/F Blade Sign
Scale: 1/2" = 1'-0"

General Notes:

- 1.) Steel design and fabrication shall be in accordance with AISC, 14th edition.
- 2.) Plate, angle channel, tee and wide flange shall be ASTM A36.
- 3.) Square or rectangular tube steel shall be ASTM A500 Grade B.
- 4.) Bolts for structural connections shall be ASTM A325.
- 5.) Shall discrepancies exist between the plans and actual conditions, contact Murchio Engineering for design review and/or revision.

Steel Welding Notes:

- 1.) Welding shall be in accordance with AWS D1.1
- 2.) AWS certification required for all structural welders
- 3.) Minimum Weld to be equal or 102% less than thickest structural section to be welded (unless otherwise noted).

Designed per IRC - 2012 including all modifications made by the State of Tennessee

Wind Profile: B3 Category III
Basic Wind Speed: 115 mph
Nominal Wind Speed: 90 mph
Wind Importance Factor: 1.1
Wind Exposure: C
ASCE Exposure: B
Gust Factor: 0.85

Seismic Load: Seismic Design Category: D
Seismic Importance: 1.5
Torsional Factor: 1.0

Exterior Components designed in accordance with applicable provisions of the ASCE 7-10

Storefront Elevation
Scale: 1/8" = 1'-0"

423 Broadway
Nashville, TN
Frank Boiano
As Noted
Adobe Illustrator CS6

SHEET 2
Mellow Mushroom

120 Volt
277 Volt

REVISIONS

R1	(10.18.16)	MD
R2	(10.24.16)	MD
R3	(11.8.16)	MD
R4	(11.15.16)	MD
R5	(11.15.16)	MD
R6	(11.18.16)	MD
R7	(12.13.16)	MD

DON BELL

Google Satellite Photo
Scale: 1/1.5"

Note: Data source: Google Earth

MELLOW MUSHROOM

Broadway Nashville, TN

Project #: 1600531 R6
Date: 10.4.16
Designer: M. De Bolt

REVISIONS

R1	(10.18.16)	MD
R2	(10.24.16)	MD
R3	(11.8.16)	MD
R4	(11.15.16)	MD
R5	(11.15.16)	MD
R6	(11.18.16)	MD
R7	(12.13.16)	MD

DON BELL

