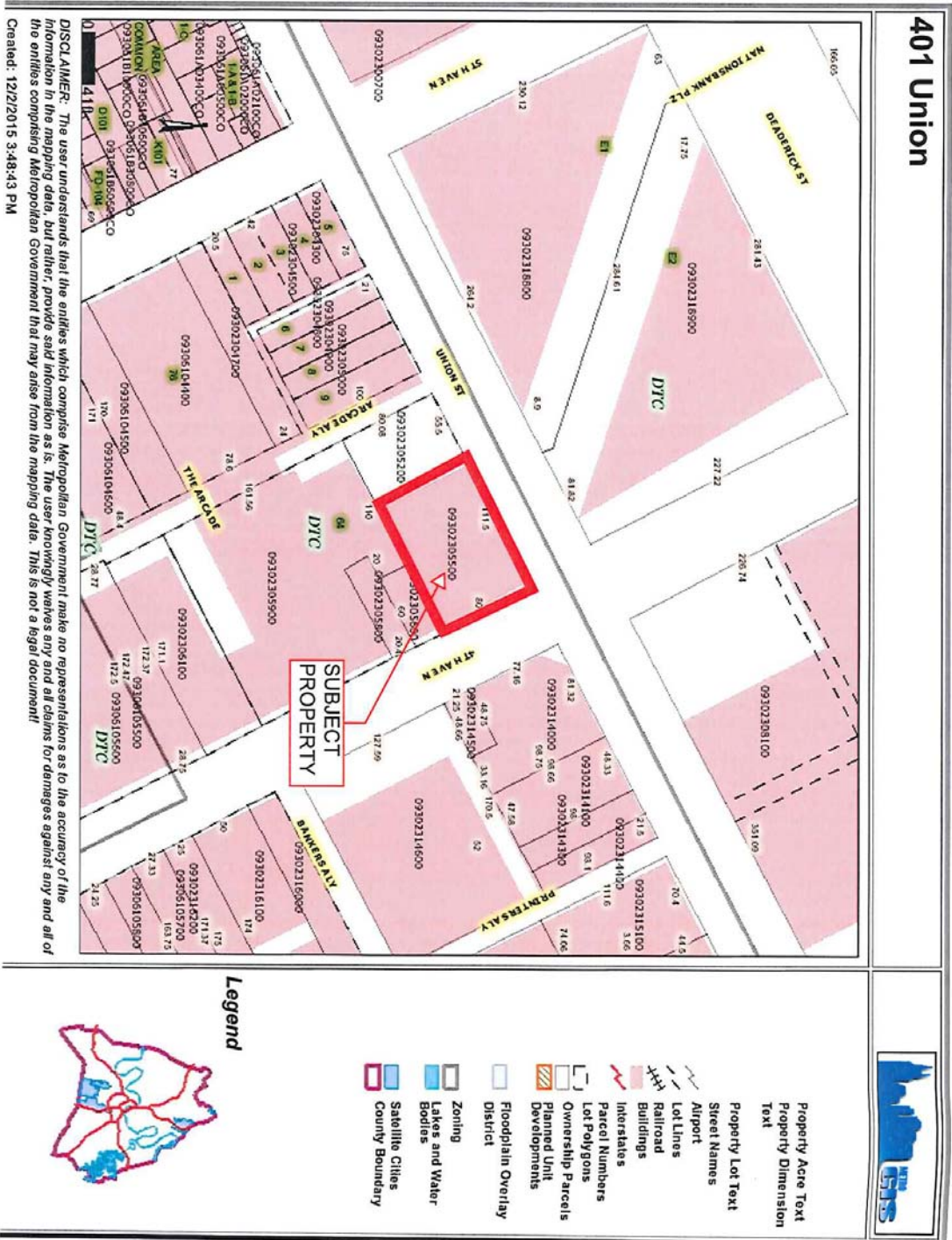
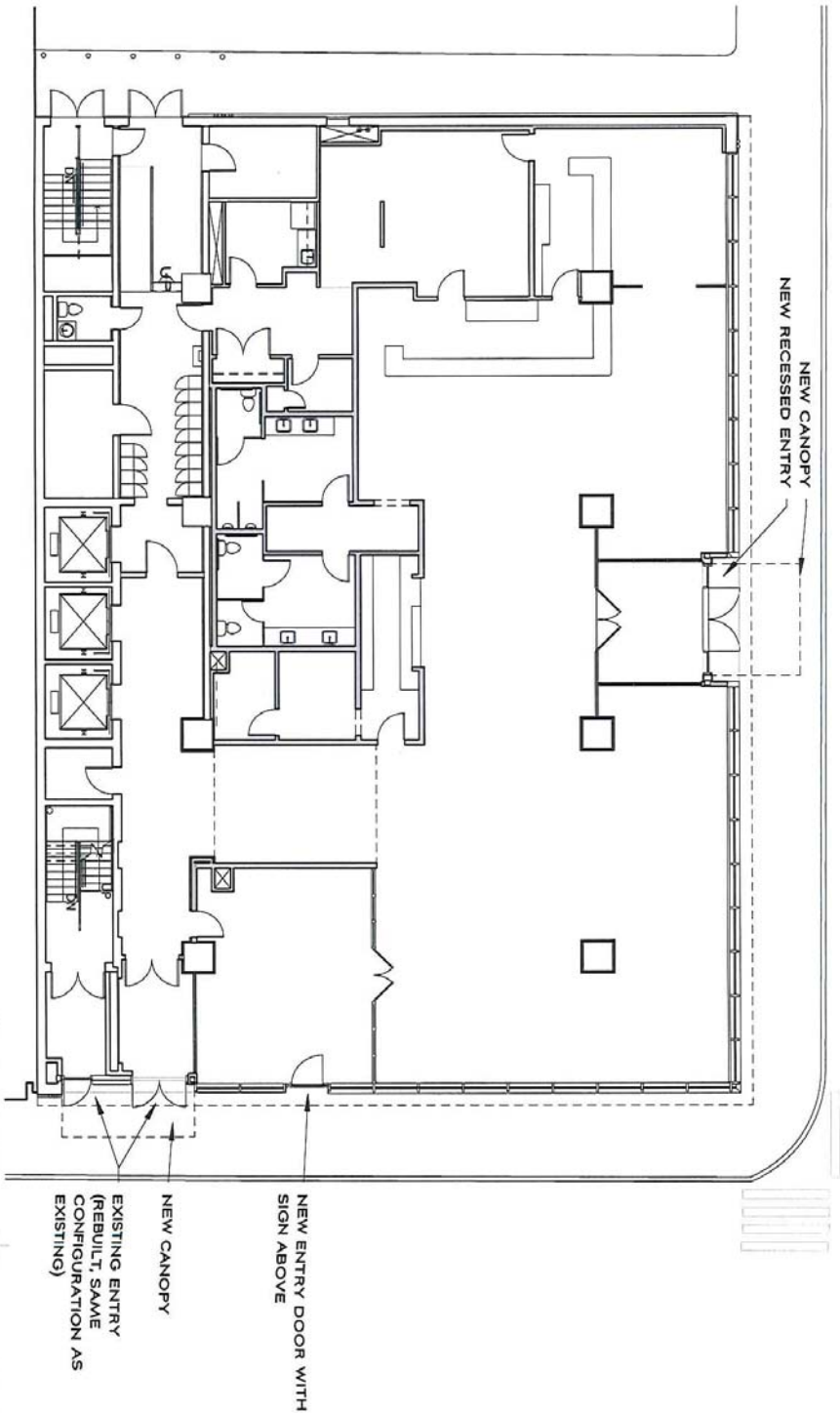


Proposal No. 2016M-001EN-001

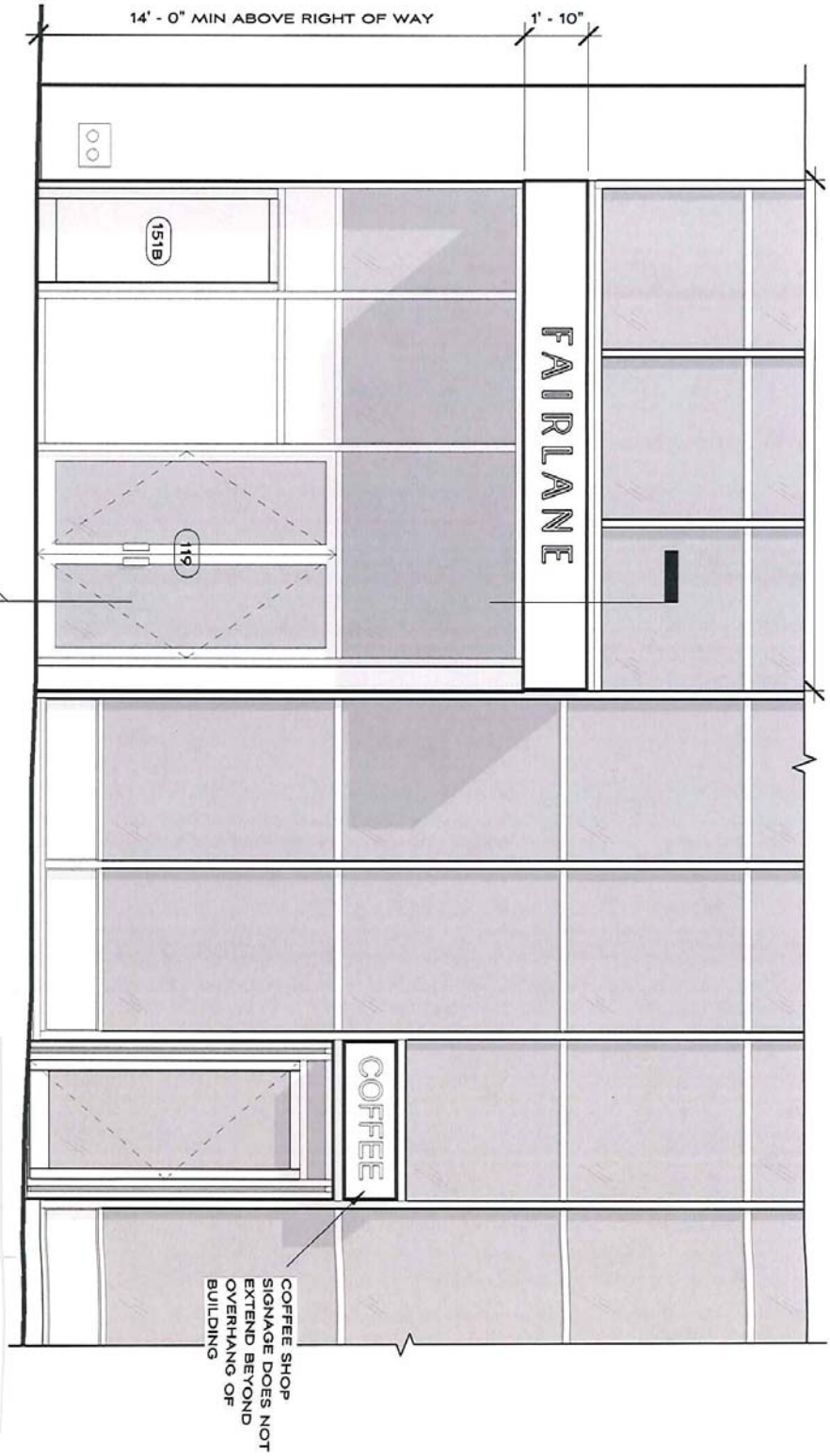


1 FLOOR PLAN - LEVEL 1
 1/16" = 1'-0"

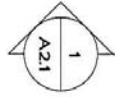


401 UNION
 FIRST FLOOR
 2015-10-15
 P-1438
A1

MANUEL ZEITLIN ARCHITECTS
 TEL 615 256.2880
 FAX 615 256.4839
 1819 21ST AVE SOUTH NASHVILLE, TN 37212



1 EAST ELEVATION - ENTRIES
 1/4" = 1'-0"

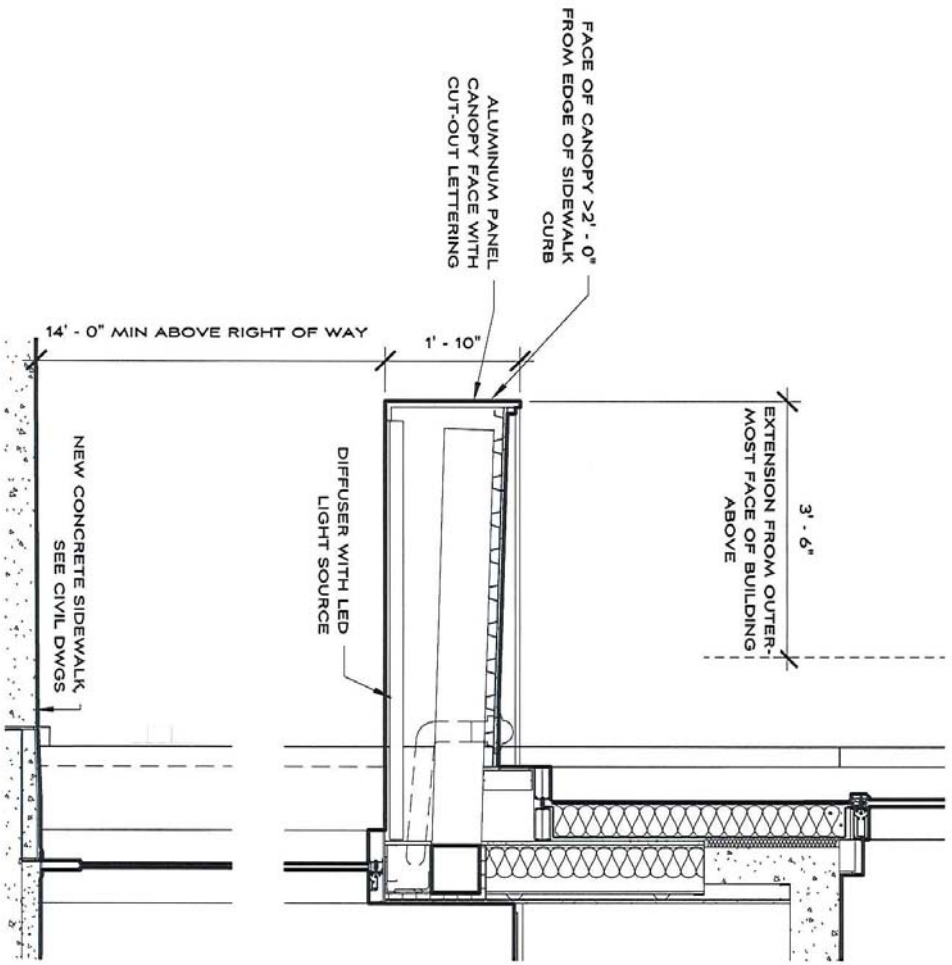


401 UNION
 4TH AVENUE
 ENTRY
 2015-10-15

A2.0
 P-1438

MANUEL ZEITLIN ARCHITECTS

TEL 615 256.2880
 FAX 615 256.4839
 1819 21ST AVE SOUTH NASHVILLE, TN 37212



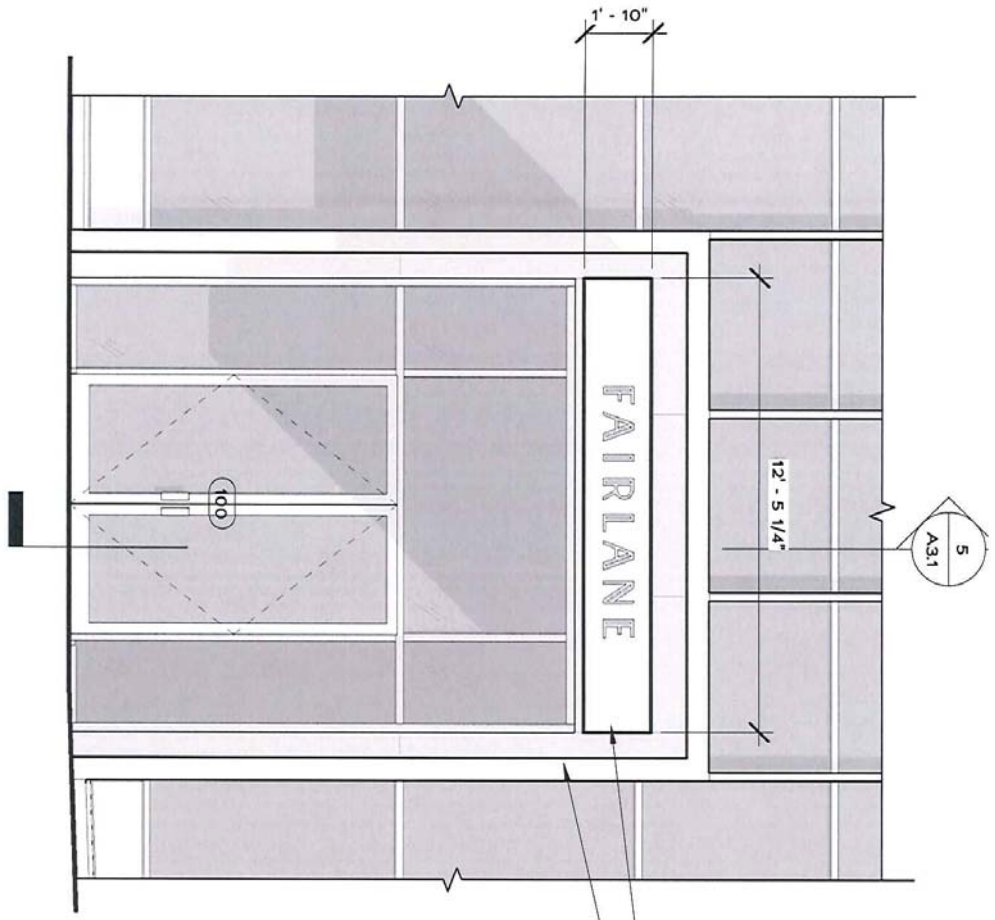
1 SECTION - 4TH STREET ENTRANCE CANOPY
 1/2" = 1'-0"

<p>401 UNION 4TH AVENUE CANOPY 2015-10-15</p>	<p>A2.1 P-1438</p>
--	--

MANUEL ZETTLIN ARCHITECTS

TEL 615 256.2880
 FAX 615 256.4839
 1819 21ST AVE SOUTH NASHVILLE TN 37212

1 NORTH ELEVATION - ENTRANCE
 1/4" = 1'-0"

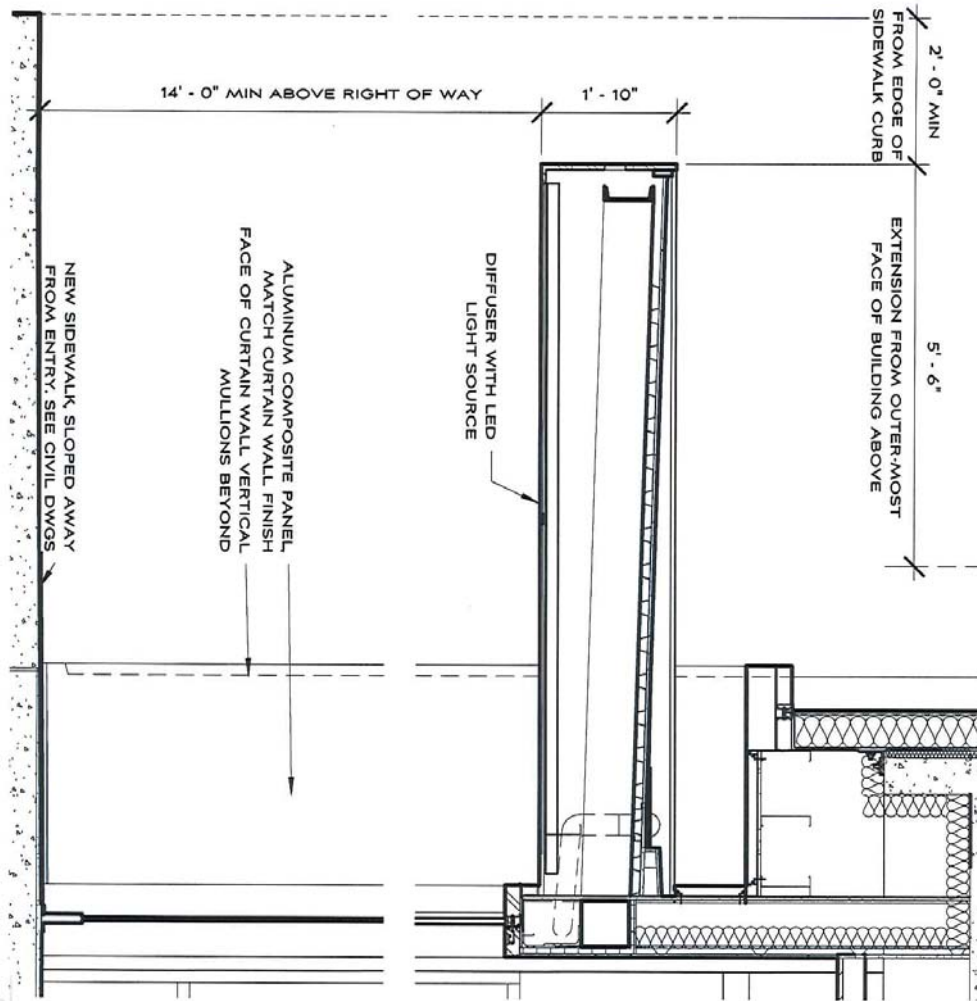


CANOPY SIGN
 7 1/2" WIDE MULLION AROUND
 ENTRY RECESS MATCH
 CURTAIN WALL

401 UNION
 UNION ENTRY
 2015-10-15
 P-1438
A3.0

MANUEL ZEITLIN ARCHITECTS

 TEL 615 256.2880
 FAX 615 256.4839
 1819 21ST AVE SOUTH NASHVILLE TN 37212



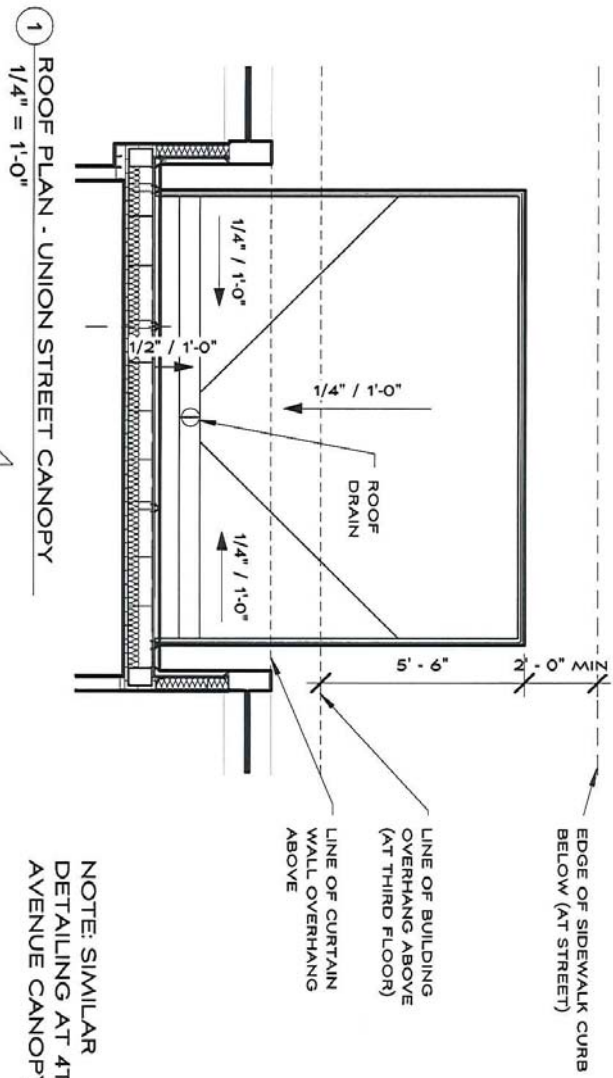
5 SECTION - UNION STREET CANOPY
 1/2" = 1'-0"

<p>401 UNION UNION STREET CANOPY 2015-10-15</p>	<p>A3.1 P-1438</p>
--	--

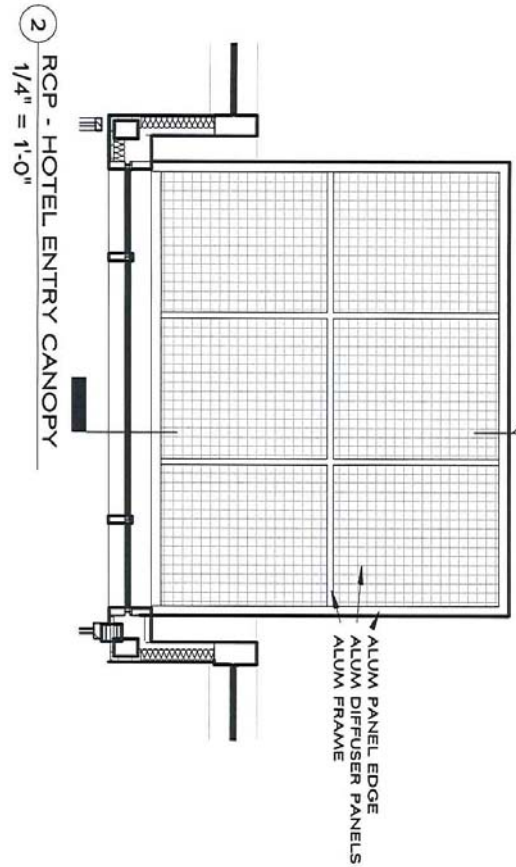
MANUEL ZEITLIN ARCHITECTS

TEL 615 256.2880
 FAX 615 256.4839

1819 21ST AVE SOUTH NASHVILLE TN 37212



NOTE: SIMILAR
DETAILING AT 4TH
AVENUE CANOPY



401 UNION		A4.0 P-1438
ROOF PLAN		
2015-10-15	MANUEL ZEITLIN ARCHITECTS	
TEL 615 256.2880 FAX 615 256.4839 1819 21ST AVE SOUTH NASHVILLE, TN 37212		