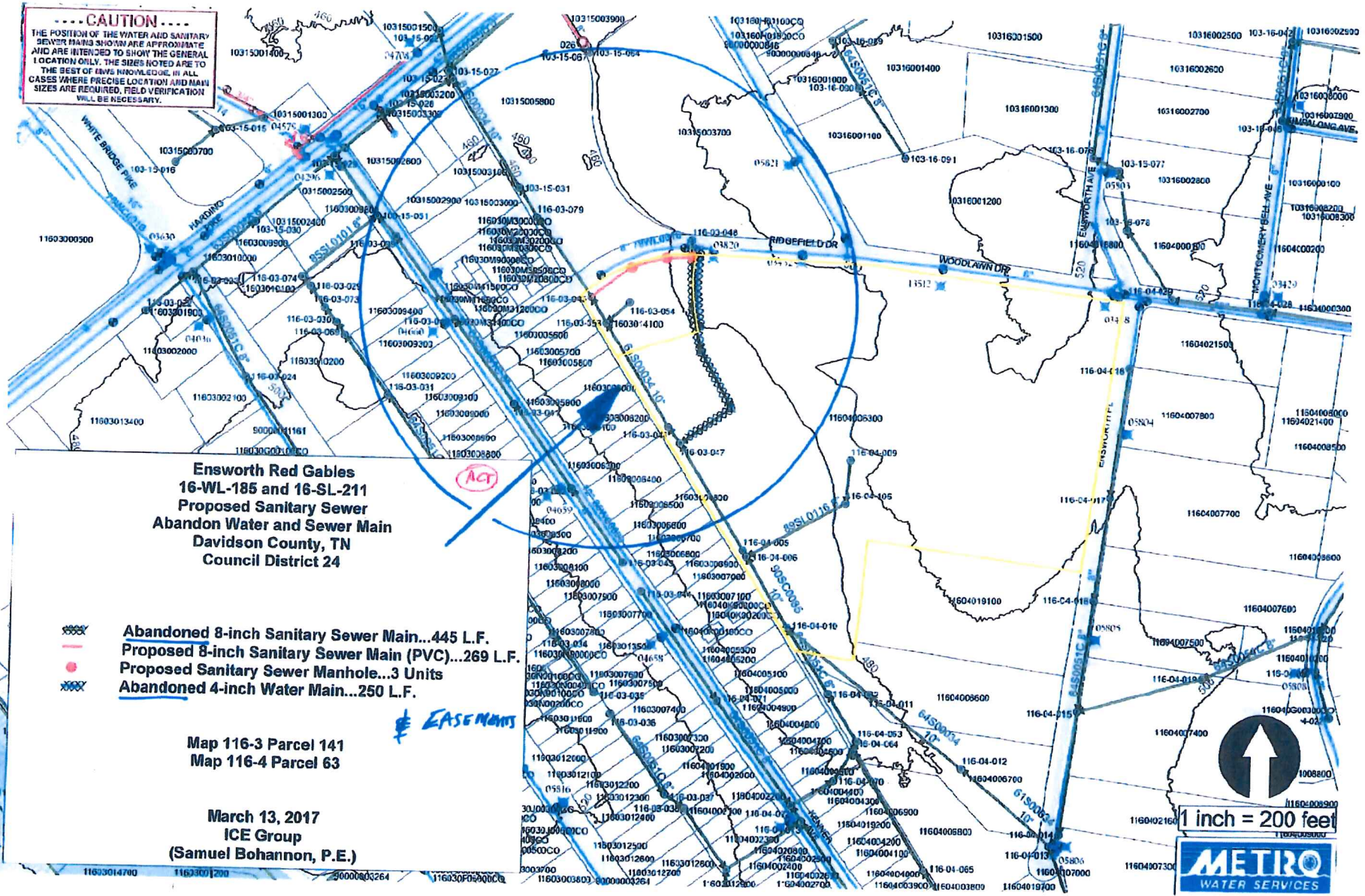


CAUTION
 THE POSITION OF THE WATER AND SANITARY SEWER MAINS SHOWN ARE APPROXIMATE AND ARE INTENDED TO SHOW THE GENERAL LOCATION ONLY. THE SIZES NOTED ARE TO THE BEST OF OURS KNOWLEDGE. IN ALL CASES WHERE PRECISE LOCATION AND MAIN SIZES ARE REQUIRED, FIELD VERIFICATION WILL BE NECESSARY.



**Ensworth Red Gables
 16-WL-185 and 16-SL-211
 Proposed Sanitary Sewer
 Abandon Water and Sewer Main
 Davidson County, TN
 Council District 24**

- Abandoned 8-inch Sanitary Sewer Main...445 L.F.
- Proposed 8-inch Sanitary Sewer Main (PVC)...269 L.F.
- Proposed Sanitary Sewer Manhole...3 Units
- Abandoned 4-inch Water Main...250 L.F.

Map 116-3 Parcel 141
 Map 116-4 Parcel 63

March 13, 2017
 ICE Group
 (Samuel Bohannon, P.E.)

1 inch = 200 feet

METRO
 WATER SERVICES