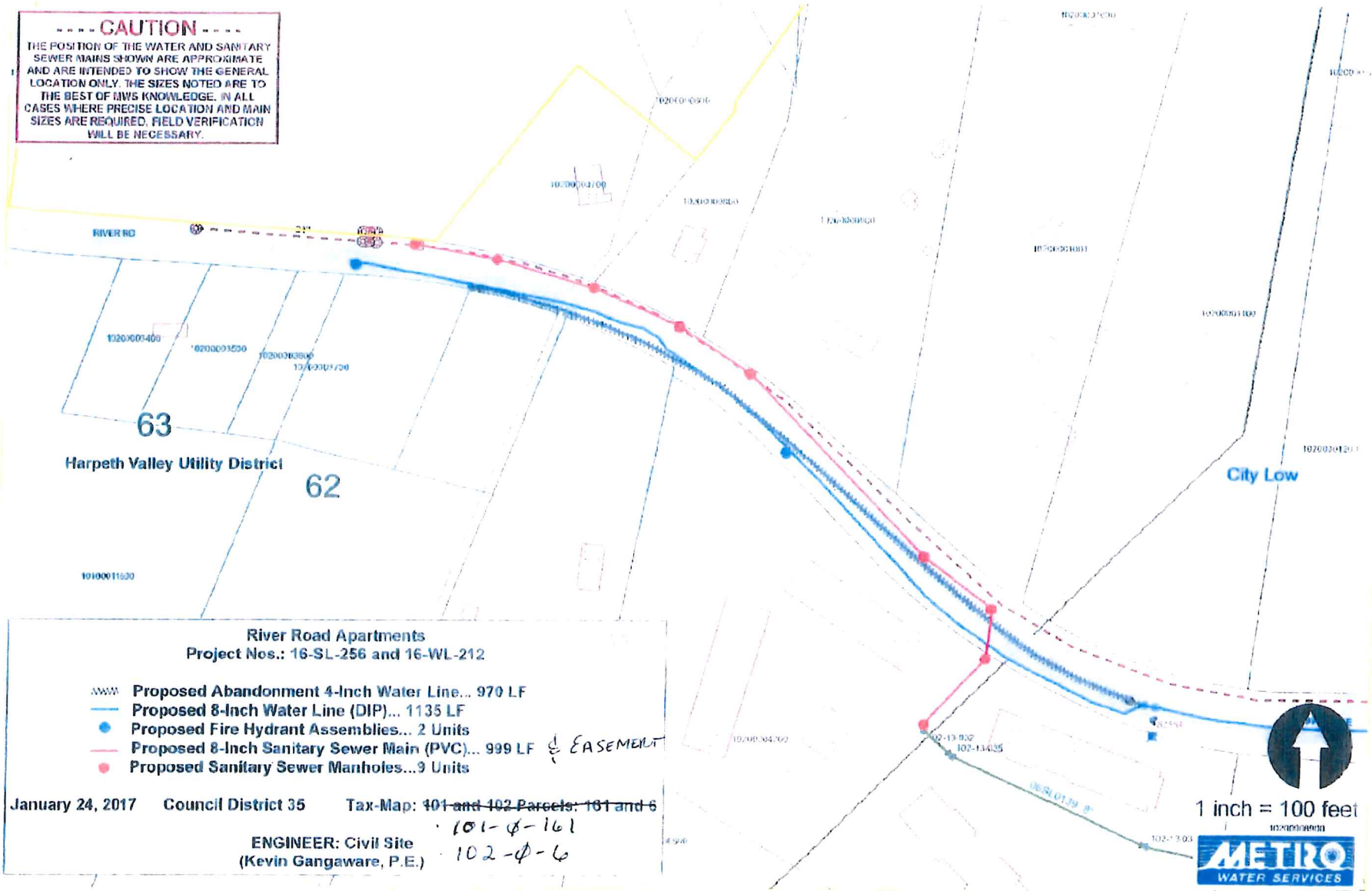


CAUTION
 THE POSITION OF THE WATER AND SANITARY SEWER MAINS SHOWN ARE APPROXIMATE AND ARE INTENDED TO SHOW THE GENERAL LOCATION ONLY. THE SIZES NOTED ARE TO THE BEST OF MWS KNOWLEDGE. IN ALL CASES WHERE PRECISE LOCATION AND MAIN SIZES ARE REQUIRED, FIELD VERIFICATION WILL BE NECESSARY.



River Road Apartments
 Project Nos.: 16-SL-256 and 16-WL-212

- Proposed Abandonment 4-Inch Water Line... 970 LF
- Proposed 8-Inch Water Line (DIP)... 1135 LF
- Proposed Fire Hydrant Assemblies... 2 Units
- Proposed 8-Inch Sanitary Sewer Main (PVC)... 999 LF & EASEMENT
- Proposed Sanitary Sewer Manholes... 9 Units

January 24, 2017 Council District 35 Tax-Map: ~~401 and 402~~ Parcels: ~~101 and 6~~
 ENGINEER: Civil Site
 (Kevin Gangaware, P.E.)

• 101-φ-161
 • 102-φ-6

1 inch = 100 feet