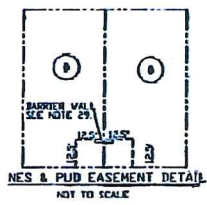


LOT AREAS

Table with 2 columns: Lot Number and Area. Includes lots 1 through 35 with their respective areas.



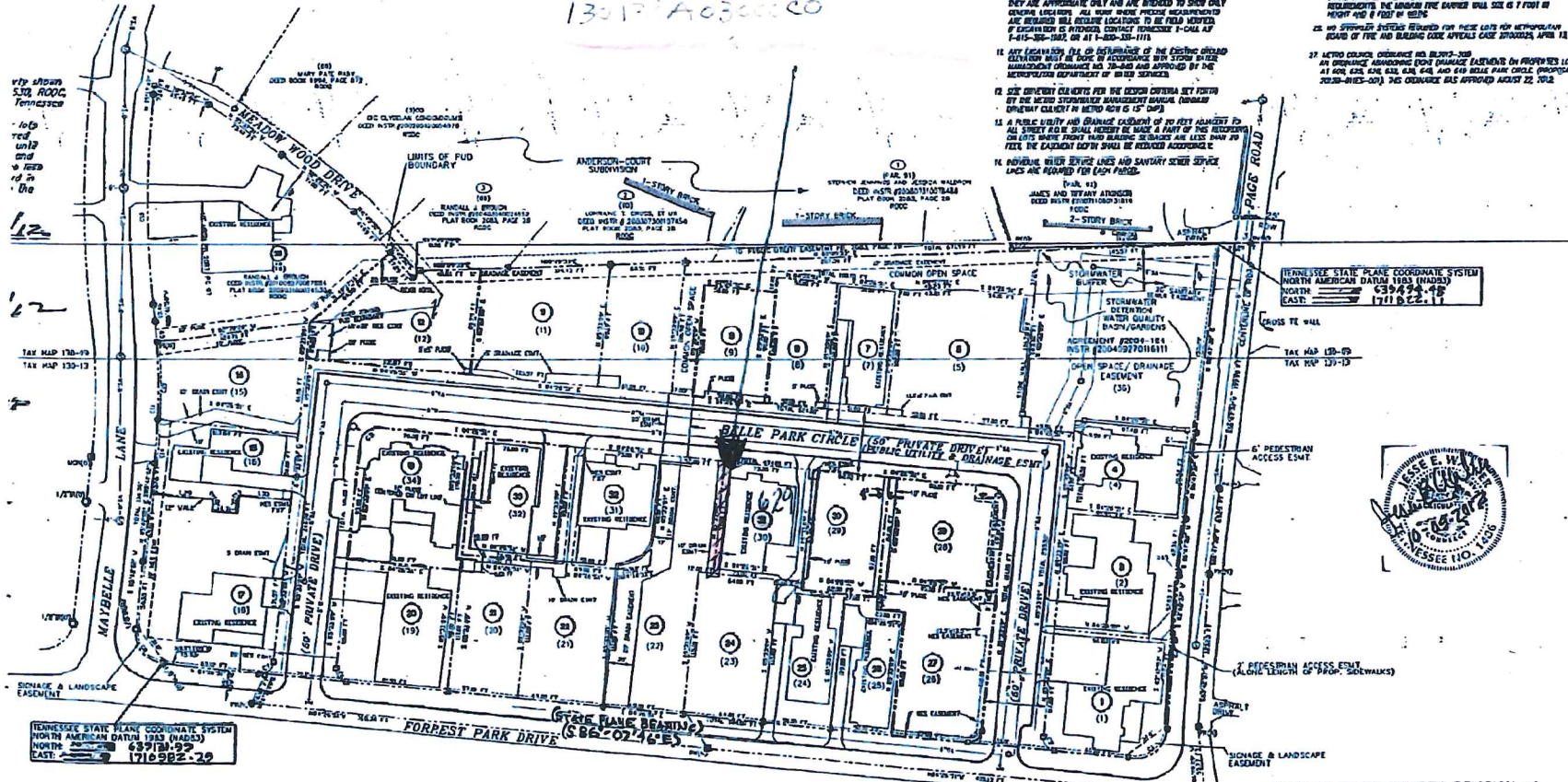
BUILD TO LINE LOCATED BETWEEN 0 AND 10 FEET FROM FRONT LOT LINE UNLESS INDICATED BY A TRICK. SAVE CORNER LOTS SMALL HAVE A BUILD TO LINE ONLY ON ONE LOT FRAGMENT.

TYPICAL LOT BUILDING ENVELOPE (AS APPROVED BY BOARD OF ZONING APPEALS) CASE NO. 2004-049

NOTES

- 1. THE PURPOSE OF THIS PLAN IS TO REVISE THE SUBDIVISION PLANS FOR LOT 6 & 7... 2. THE SURVEY IS CORRECT TO THE BEST OF MY KNOWLEDGE AND BELIEF... 3. THE SURVEY IS SUBJECT TO THE INTERESTS OF ANY ASSAULT...

629 Belle Park Cir  
13017 A030000



FINAL PLAN OF FOURTH REVISION of JARDIN DE BELLE a MAJOR SUBDIVISION PLAN

THIRTY-FOURTH COUNCILMANIC DISTRICT; CARTER TODD DAVIDSON COUNTY, NASHVILLE, TENNESSEE OVERLAY DISTRICT: DV-RES A PLANNED UNIT DEVELOPMENT

DEVELOPED FOR: W. HUGH NELSON BUILDERS, ET AL  
1 VALLEY FORGE  
NASHVILLE, TENNESSEE 37205  
PHONE: 615-500-3377

CURVE TABLE with columns: RADIUS, TANGENT, DELTA, BEARING, CHL. DIST. Lists data for various curve sizes.

Commission's Approval  
Approved by the Metropolitan Planning Commission of Nashville and Davidson County, Tennessee.  
Date: 11/18/2012



SURVEYOR'S CERTIFICATE  
I HEREBY CERTIFY THAT TO THE BEST OF MY KNOWLEDGE AND BELIEF THE HEREIN SHOWN SUBDIVISION PLAN REPRESENTS A CATEGORY 1 SURVEY...

JESSE WALKER ENGINEERING  
Professional Survey & Engineering Services  
P.O. Box 210456, Nashville, TN 37221-0456  
Phone: (615) 646-8228

Project metadata table including City (Nashville), County (Davidson), District (34th), and various ID numbers.

Revision history table with columns: DATE, REVISION NUMBER. Shows revisions 01 to 05 dated from 08-30-2012 to 10-09-2012.