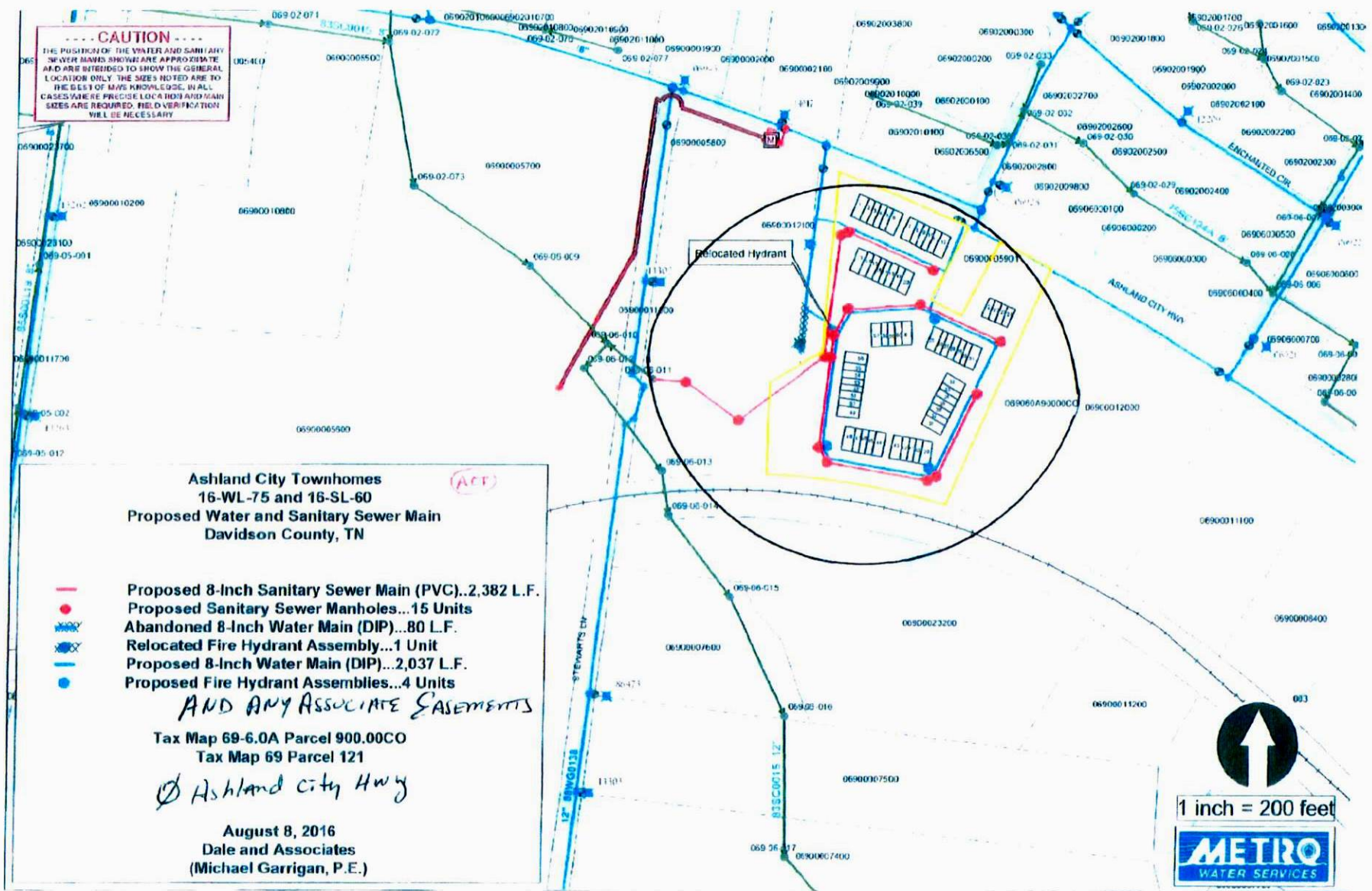


Exhibit 1



**CAUTION**  
 THE POSITION OF THE WATER AND SANITARY SEWER MAINS SHOWN ARE APPROXIMATE AND ARE INTENDED TO SHOW THE GENERAL LOCATION ONLY. THE SIZES NOTED ARE TO THE BEST OF OUR KNOWLEDGE. IN ALL CASES WHERE PRECISE LOCATION MAIN SIZES ARE REQUIRED, FIELD VERIFICATION WILL BE NECESSARY.

**Ashland City Townhomes**  
 16-WL-75 and 16-SL-60  
 Proposed Water and Sanitary Sewer Main  
 Davidson County, TN

— Proposed 8-inch Sanitary Sewer Main (PVC)...2,382 L.F.  
● Proposed Sanitary Sewer Manholes...15 Units  
— Abandoned 8-inch Water Main (DIP)...80 L.F.  
● Relocated Fire Hydrant Assembly...1 Unit  
— Proposed 8-inch Water Main (DIP)...2,037 L.F.  
● Proposed Fire Hydrant Assemblies...4 Units  
**AND ANY ASSOCIATE EASEMENTS**

Tax Map 69-6.0A Parcel 900.00C0  
 Tax Map 69 Parcel 121  
 Ashland City Hwy

August 8, 2016  
 Dale and Associates  
 (Michael Garrigan, P.E.)

1 inch = 200 feet