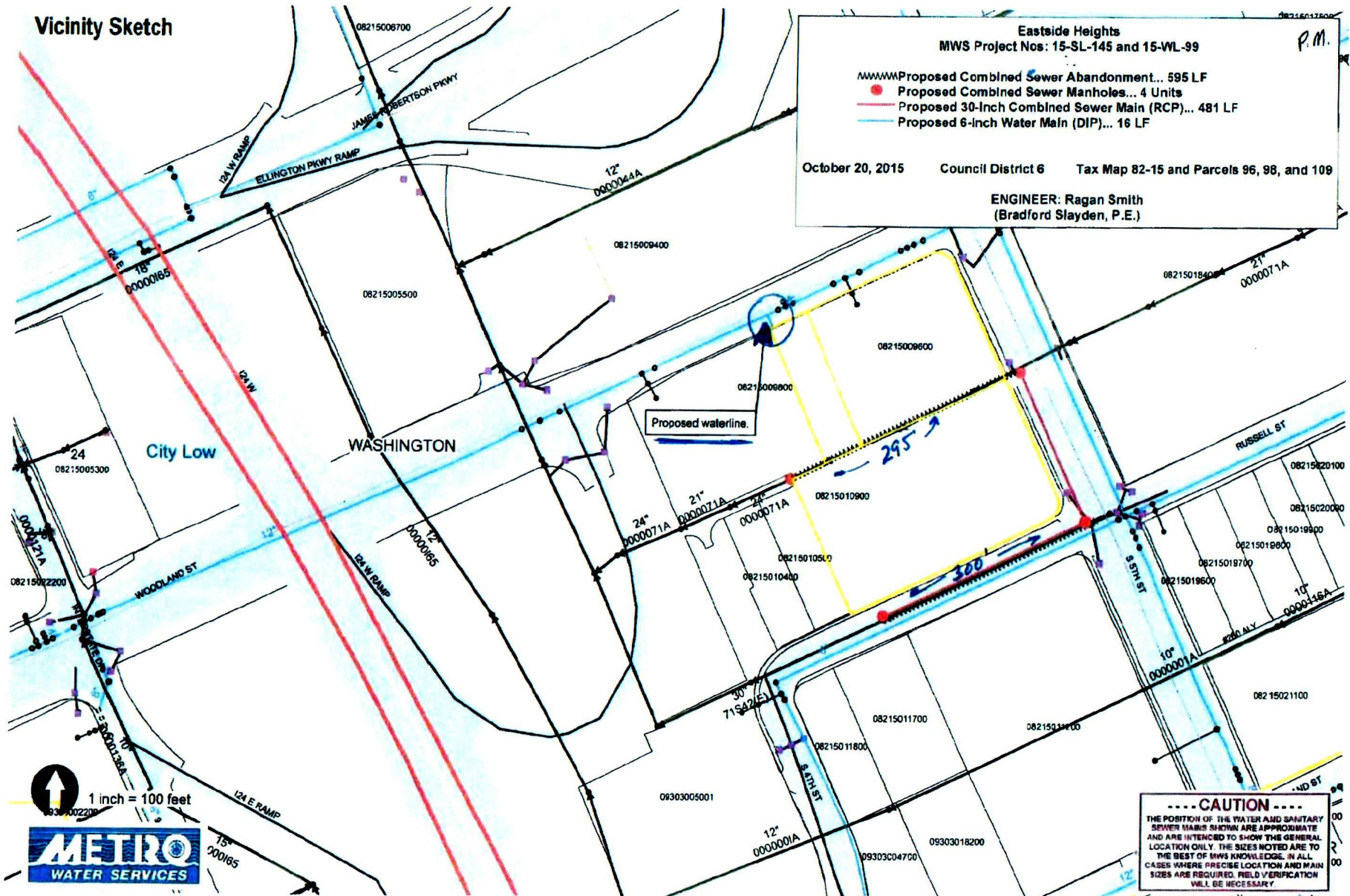


Exhibit 1

Vicinity Sketch



P.M.

Eastside Heights
MWS Project Nos: 15-SL-145 and 15-WL-99

- ##### Proposed Combined Sewer Abandonment... 595 LF
- Proposed Combined Sewer Manholes... 4 Units
- Proposed 30-Inch Combined Sewer Main (RCP)... 481 LF
- Proposed 6-inch Water Main (DIP)... 16 LF

October 20, 2015 Council District 6 Tax Map 82-15 and Parcels 96, 98, and 109

ENGINEER: Ragan Smith
(Bradford Slayden, P.E.)

1 inch = 100 feet

CAUTION

THE POSITION OF THE WATER AND SANITARY SEWER MAINS SHOWN ARE APPROXIMATE AND ARE INTENDED TO SHOW THE GENERAL LOCATION ONLY. THE SIZES NOTED ARE TO THE BEST OF MWS KNOWLEDGE. IN ALL CASES WHERE PRECISE LOCATION AND MAIN SIZES ARE REQUIRED, FIELD VERIFICATION WILL BE NECESSARY.