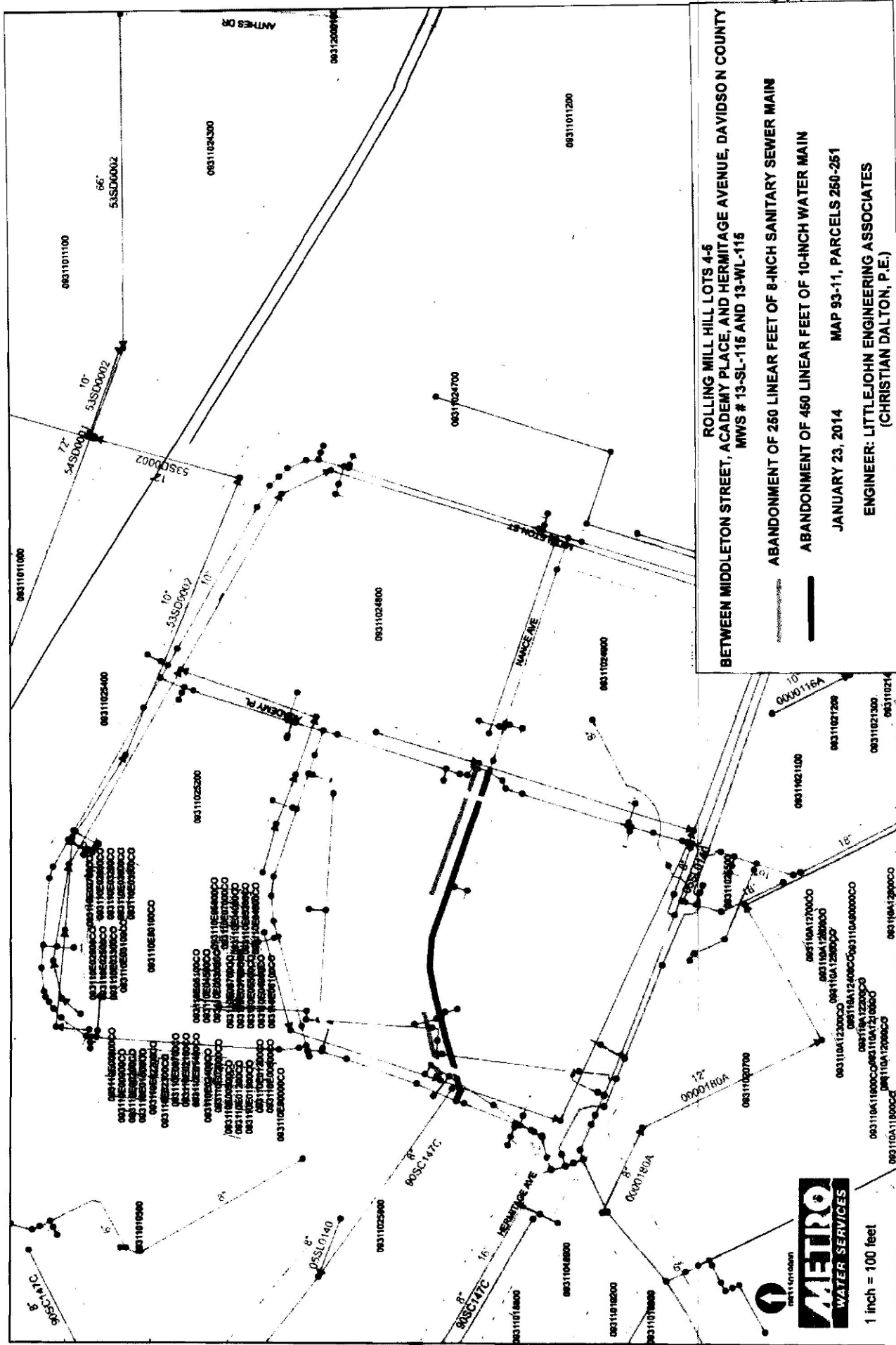


Exhibit 1



ROLLING MILL HILL LOTS 4-6
 BETWEEN MIDDLETON STREET, ACADEMY PLACE, AND HERMITAGE AVENUE, DAVIDSON COUNTY
 MWS # 13-SL-116 AND 13-WL-115

ABANDONMENT OF 260 LINEAR FEET OF 8-INCH SANITARY SEWER MAIN
 ABANDONMENT OF 450 LINEAR FEET OF 10-INCH WATER MAIN

JANUARY 23, 2014 MAP 93-11, PARCELS 250-251
 ENGINEER: LITTLEJOHN ENGINEERING ASSOCIATES
 (CHRISTIAN DALTON, P.E.)



1 inch = 100 feet