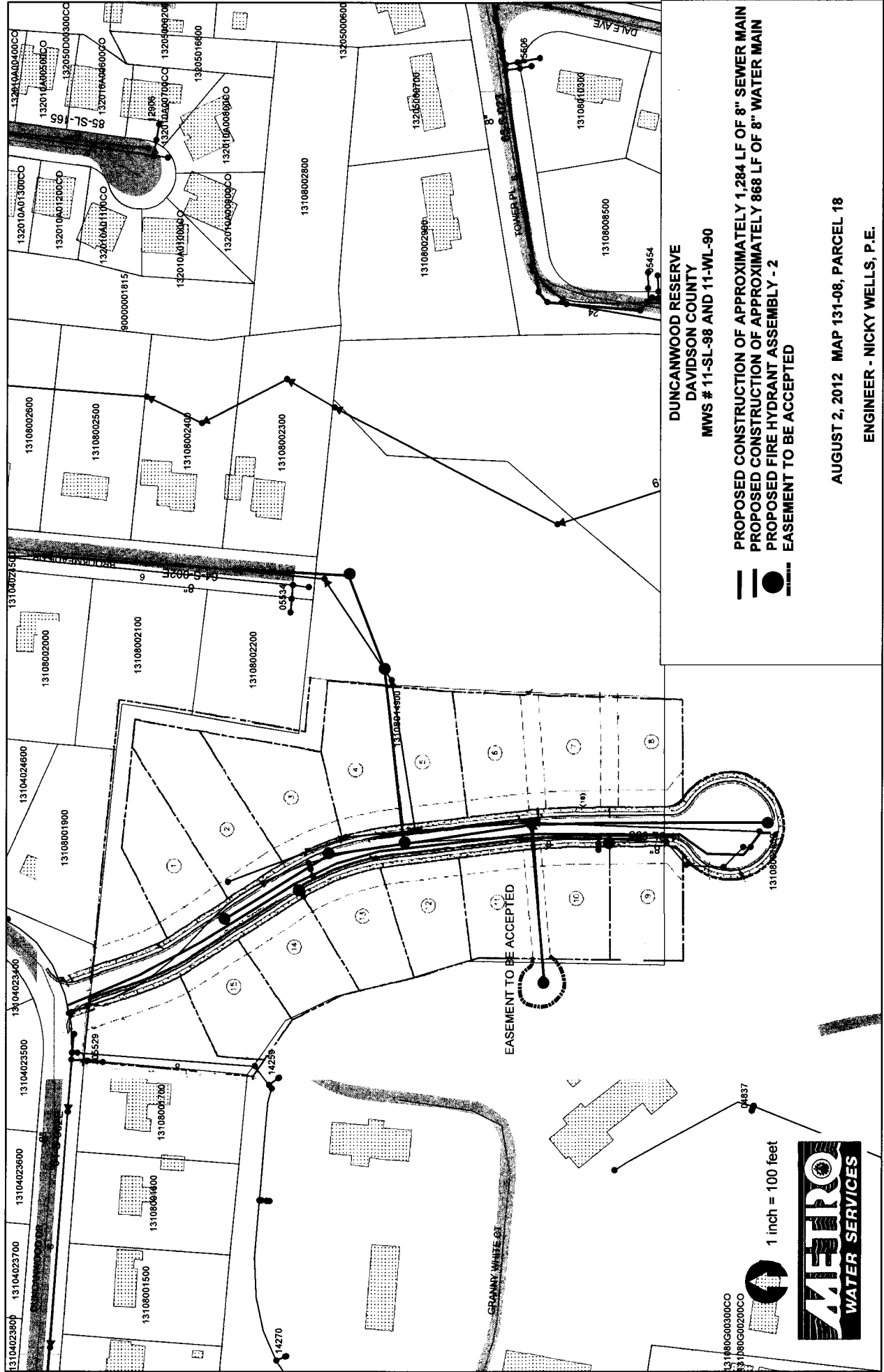


Exhibit 1



DUNCANWOOD RESERVE  
 DAVIDSON COUNTY  
 MWS # 11-SL-98 AND 11-WL-90

PROPOSED CONSTRUCTION OF APPROXIMATELY 1,284 LF OF 8" SEWER MAIN  
 PROPOSED CONSTRUCTION OF APPROXIMATELY 868 LF OF 8" WATER MAIN  
 PROPOSED FIRE HYDRANT ASSEMBLY - 2  
 EASEMENT TO BE ACCEPTED

AUGUST 2, 2012 MAP 131-08, PARCEL 18

ENGINEER - NICKY WELLS, P.E.

1 inch = 100 feet

