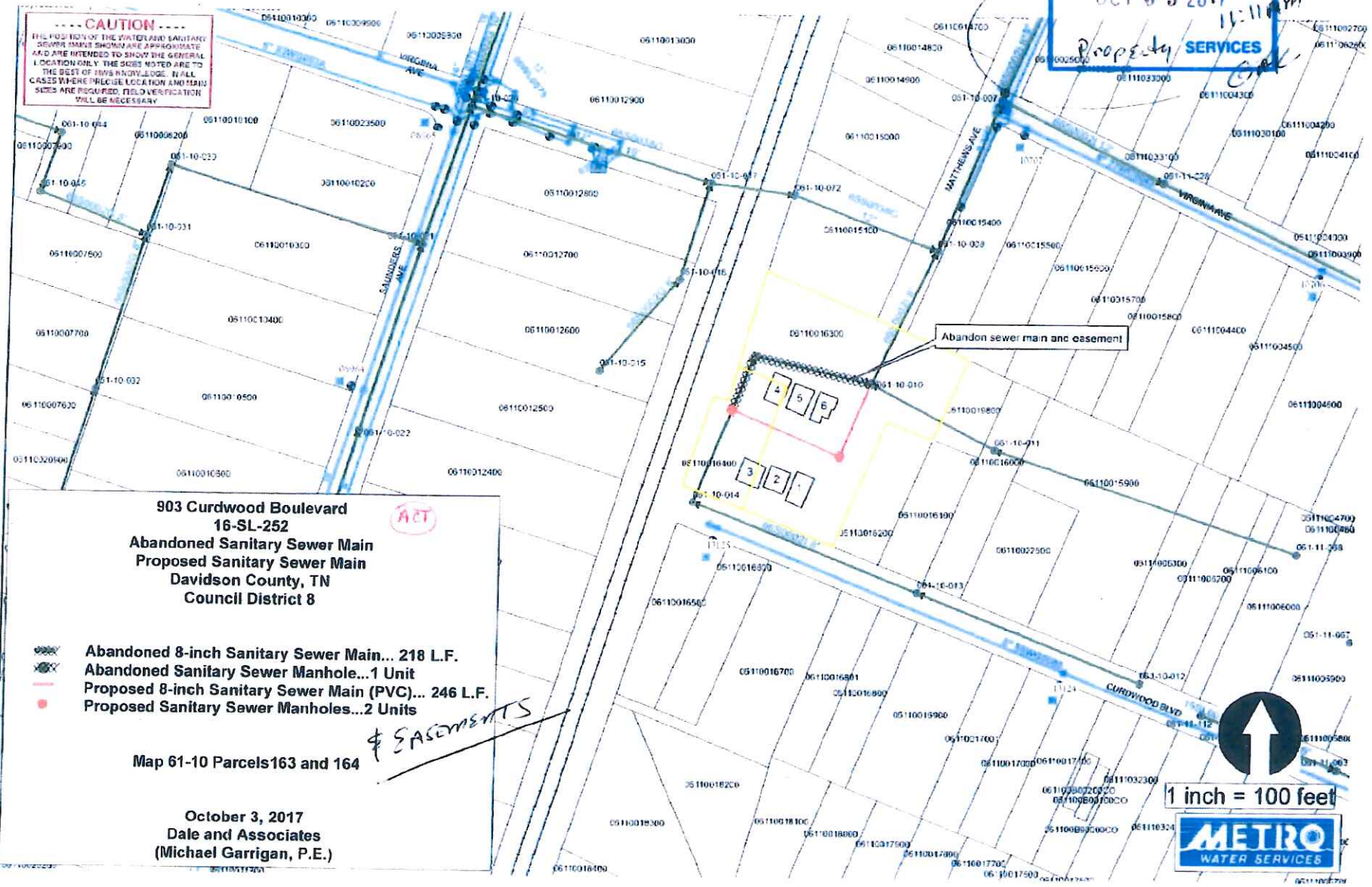


RECEIVED
OCT 03 2017
11:11 am
Property SERVICES
GAL

CAUTION
THE POSITION OF THE WATER AND SANITARY SEWER MAINS SHOWN ARE APPROXIMATE AND ARE INTENDED TO SHOW THE GENERAL LOCATION ONLY. THE SIZES NOTED ARE TO THE BEST OF THIS KNOWLEDGE. IN ALL CASES WHERE PRECISE LOCATION AND MAIN SIZES ARE REQUIRED, FIELD VERIFICATION WILL BE NECESSARY.



Abandon sewer main and easement

903 Curdwood Boulevard
16-SL-252
Abandoned Sanitary Sewer Main
Proposed Sanitary Sewer Main
Davidson County, TN
Council District 8

- Abandoned 8-inch Sanitary Sewer Main... 218 L.F.
- Abandoned Sanitary Sewer Manhole... 1 Unit
- Proposed 8-inch Sanitary Sewer Main (PVC)... 246 L.F.
- Proposed Sanitary Sewer Manholes... 2 Units

EASEMENTS

Map 61-10 Parcels 163 and 164

October 3, 2017
Dale and Associates
(Michael Garrigan, P.E.)



1 inch = 100 feet

