

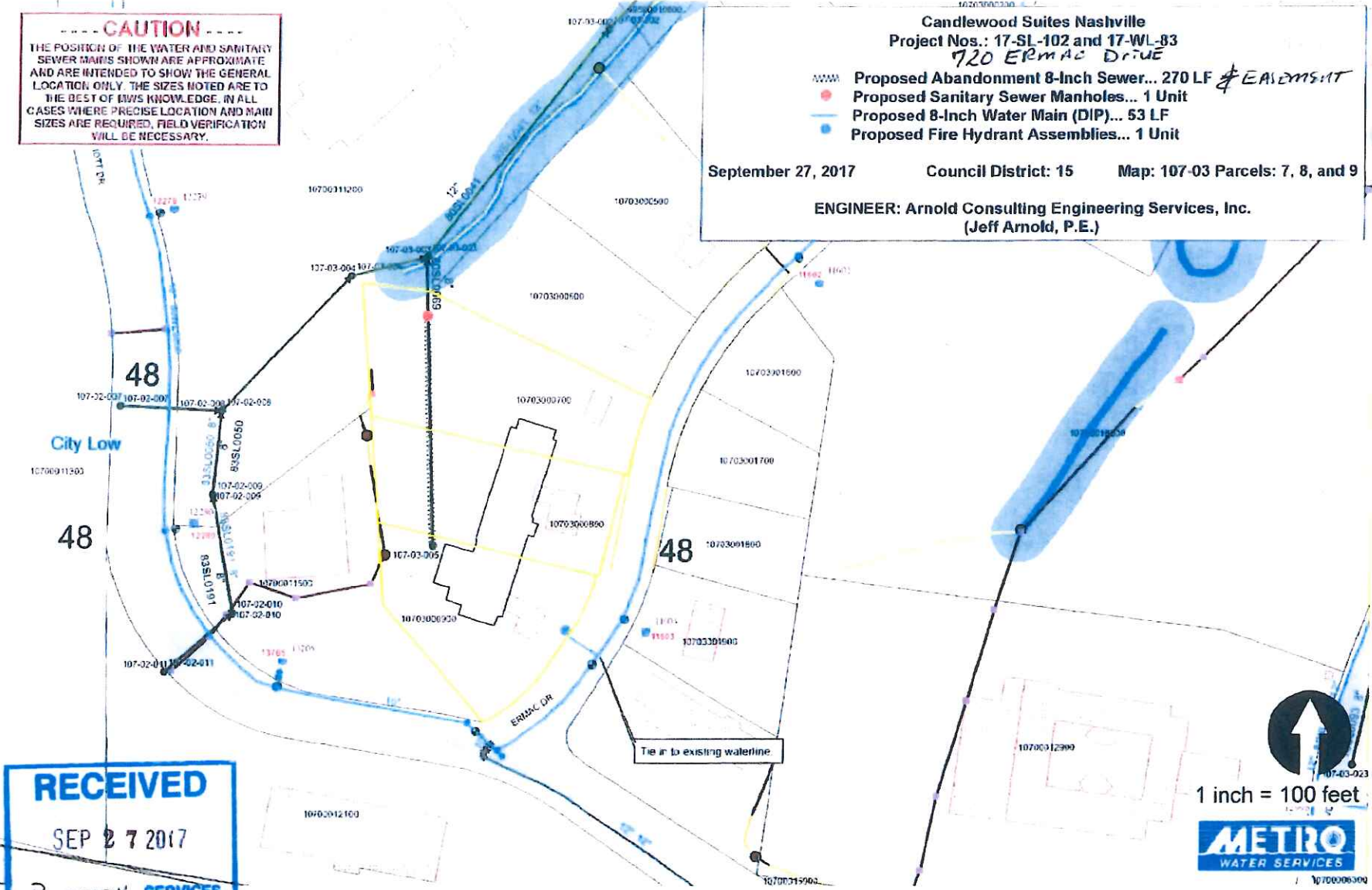
**CAUTION**  
 THE POSITION OF THE WATER AND SANITARY SEWER MAINS SHOWN ARE APPROXIMATE AND ARE INTENDED TO SHOW THE GENERAL LOCATION ONLY. THE SIZES NOTED ARE TO THE BEST OF MWS KNOWLEDGE. IN ALL CASES WHERE PRECISE LOCATION AND MAIN SIZES ARE REQUIRED, FIELD VERIFICATION WILL BE NECESSARY.

**Candlewood Suites Nashville**  
 Project Nos.: 17-SL-102 and 17-WL-83  
 720 ERMAC DRIVE

--- Proposed Abandonment 8-Inch Sewer... 270 LF *& EASEMENT*  
● Proposed Sanitary Sewer Manholes... 1 Unit  
--- Proposed 8-Inch Water Main (DIP)... 53 LF  
● Proposed Fire Hydrant Assemblies... 1 Unit

September 27, 2017      Council District: 15      Map: 107-03 Parcels: 7, 8, and 9

ENGINEER: Arnold Consulting Engineering Services, Inc.  
 (Jeff Arnold, P.E.)



**RECEIVED**  
 SEP 27 2017  
 Property SERVICES  
 10:52 AM C.A.H.

1 inch = 100 feet

**METRO**  
 WATER SERVICES