

FILE NO.	PROJECT NO.
DATE	DATE
DESIGNED BY	DR
DRAWN BY	MM
CHECKED BY	OK
DATE	REVISION NO.
DATE	DATE
DATE	DATE

PRELIMINARY

METROPOLITAN GOVERNMENT OF NASHVILLE AND DAVIDSON COUNTY DEPARTMENT OF PUBLIC WORKS

DAVIDSON COUNTY

ORLANDO AVENUE BRIDGE REPLACEMENT PROJECT NO. 2010-B-002

CONSTRUCTION PLANS

NOT TO SCALE

Project Authorized by Council Resolution No. _____

APPROVED: _____ Date _____

DIRECTOR OF ENGINEERING

File No. _____ Sheet 1 of 16

CIVIC
CONSTRUCTION TECHNOLOGY PROGRAM
25 LINDSEY AVENUE
NASHVILLE, TN 37203
TEL: 615-252-3300

SPECIAL NOTES

THIS PROJECT TO BE CONSTRUCTED UNDER THE STANDARD BIDDING AND BRIDGE SPECIFICATIONS OF THE TENNESSEE DEPARTMENT OF TRANSPORTATION, LATEST EDITION, AND ADDITIONAL SPECIFICATIONS AND SPECIAL PROVISIONS CONTAINED IN THE PLANS AND IN THE CONTRACT.

INDEX

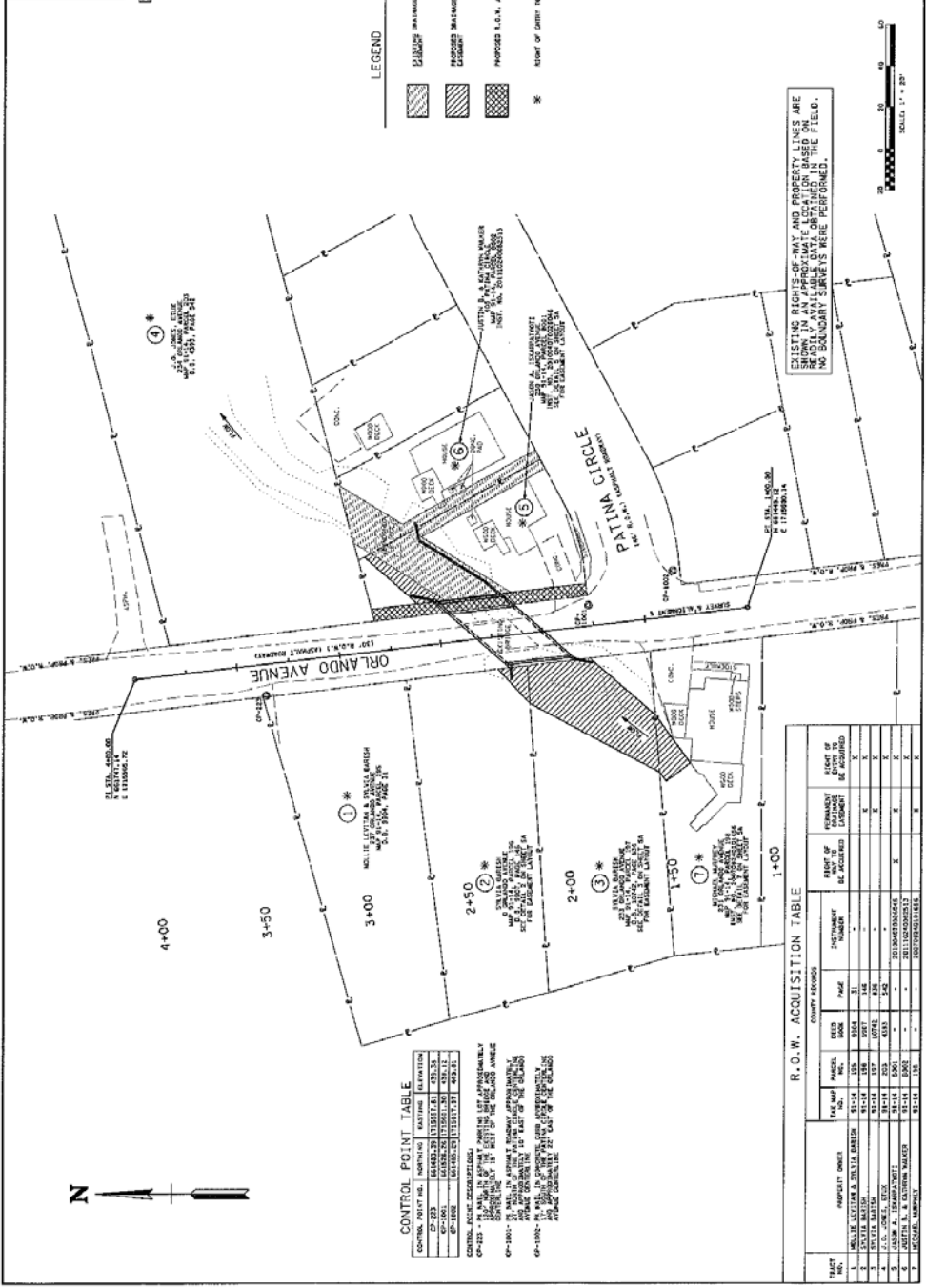
SHEET NO.	DESCRIPTION
1	INDEX
2	GENERAL NOTES, ESTIMATED QUANTITIES, & STANDARD DRAWINGS
3	TYPICAL SECTIONS
4	PLAN LAYOUT
5	BASEMENT LAYOUTS
5A	ROADWAY LAYOUT & PROFILE
6	ROADWAY CROSS-SECTIONS
7	STREAM CROSS-SECTIONS
8	PHASE I - PHASE II EROSION CONTROL PLAN
8-2C	PHASE I - PHASE II EROSION CONTROL PLAN
9	PHASE I - PHASE II EROSION CONTROL PLAN
10	PHASE I - PHASE II EROSION CONTROL PLAN
11	PHASE I - PHASE II EROSION CONTROL PLAN
12	PHASE I - PHASE II EROSION CONTROL PLAN
13	PHASE I - PHASE II EROSION CONTROL PLAN
14	PHASE I - PHASE II EROSION CONTROL PLAN
15	PHASE I - PHASE II EROSION CONTROL PLAN
16	PHASE I - PHASE II EROSION CONTROL PLAN
17	PHASE I - PHASE II EROSION CONTROL PLAN
18	PHASE I - PHASE II EROSION CONTROL PLAN
19	PHASE I - PHASE II EROSION CONTROL PLAN
20	PHASE I - PHASE II EROSION CONTROL PLAN
21	PHASE I - PHASE II EROSION CONTROL PLAN
22	PHASE I - PHASE II EROSION CONTROL PLAN
23	PHASE I - PHASE II EROSION CONTROL PLAN
24	PHASE I - PHASE II EROSION CONTROL PLAN
25	PHASE I - PHASE II EROSION CONTROL PLAN
26	PHASE I - PHASE II EROSION CONTROL PLAN
27	PHASE I - PHASE II EROSION CONTROL PLAN
28	PHASE I - PHASE II EROSION CONTROL PLAN
29	PHASE I - PHASE II EROSION CONTROL PLAN
30	PHASE I - PHASE II EROSION CONTROL PLAN
31	PHASE I - PHASE II EROSION CONTROL PLAN
32	PHASE I - PHASE II EROSION CONTROL PLAN
33	PHASE I - PHASE II EROSION CONTROL PLAN
34	PHASE I - PHASE II EROSION CONTROL PLAN
35	PHASE I - PHASE II EROSION CONTROL PLAN
36	PHASE I - PHASE II EROSION CONTROL PLAN
37	PHASE I - PHASE II EROSION CONTROL PLAN
38	PHASE I - PHASE II EROSION CONTROL PLAN
39	PHASE I - PHASE II EROSION CONTROL PLAN
40	PHASE I - PHASE II EROSION CONTROL PLAN
41	PHASE I - PHASE II EROSION CONTROL PLAN
42	PHASE I - PHASE II EROSION CONTROL PLAN
43	PHASE I - PHASE II EROSION CONTROL PLAN
44	PHASE I - PHASE II EROSION CONTROL PLAN
45	PHASE I - PHASE II EROSION CONTROL PLAN
46	PHASE I - PHASE II EROSION CONTROL PLAN
47	PHASE I - PHASE II EROSION CONTROL PLAN
48	PHASE I - PHASE II EROSION CONTROL PLAN
49	PHASE I - PHASE II EROSION CONTROL PLAN
50	PHASE I - PHASE II EROSION CONTROL PLAN
51	PHASE I - PHASE II EROSION CONTROL PLAN
52	PHASE I - PHASE II EROSION CONTROL PLAN
53	PHASE I - PHASE II EROSION CONTROL PLAN
54	PHASE I - PHASE II EROSION CONTROL PLAN
55	PHASE I - PHASE II EROSION CONTROL PLAN
56	PHASE I - PHASE II EROSION CONTROL PLAN
57	PHASE I - PHASE II EROSION CONTROL PLAN
58	PHASE I - PHASE II EROSION CONTROL PLAN
59	PHASE I - PHASE II EROSION CONTROL PLAN
60	PHASE I - PHASE II EROSION CONTROL PLAN
61	PHASE I - PHASE II EROSION CONTROL PLAN
62	PHASE I - PHASE II EROSION CONTROL PLAN
63	PHASE I - PHASE II EROSION CONTROL PLAN
64	PHASE I - PHASE II EROSION CONTROL PLAN
65	PHASE I - PHASE II EROSION CONTROL PLAN
66	PHASE I - PHASE II EROSION CONTROL PLAN
67	PHASE I - PHASE II EROSION CONTROL PLAN
68	PHASE I - PHASE II EROSION CONTROL PLAN
69	PHASE I - PHASE II EROSION CONTROL PLAN
70	PHASE I - PHASE II EROSION CONTROL PLAN
71	PHASE I - PHASE II EROSION CONTROL PLAN
72	PHASE I - PHASE II EROSION CONTROL PLAN
73	PHASE I - PHASE II EROSION CONTROL PLAN
74	PHASE I - PHASE II EROSION CONTROL PLAN
75	PHASE I - PHASE II EROSION CONTROL PLAN
76	PHASE I - PHASE II EROSION CONTROL PLAN
77	PHASE I - PHASE II EROSION CONTROL PLAN
78	PHASE I - PHASE II EROSION CONTROL PLAN
79	PHASE I - PHASE II EROSION CONTROL PLAN
80	PHASE I - PHASE II EROSION CONTROL PLAN
81	PHASE I - PHASE II EROSION CONTROL PLAN
82	PHASE I - PHASE II EROSION CONTROL PLAN
83	PHASE I - PHASE II EROSION CONTROL PLAN
84	PHASE I - PHASE II EROSION CONTROL PLAN
85	PHASE I - PHASE II EROSION CONTROL PLAN
86	PHASE I - PHASE II EROSION CONTROL PLAN
87	PHASE I - PHASE II EROSION CONTROL PLAN
88	PHASE I - PHASE II EROSION CONTROL PLAN
89	PHASE I - PHASE II EROSION CONTROL PLAN
90	PHASE I - PHASE II EROSION CONTROL PLAN
91	PHASE I - PHASE II EROSION CONTROL PLAN
92	PHASE I - PHASE II EROSION CONTROL PLAN
93	PHASE I - PHASE II EROSION CONTROL PLAN
94	PHASE I - PHASE II EROSION CONTROL PLAN
95	PHASE I - PHASE II EROSION CONTROL PLAN
96	PHASE I - PHASE II EROSION CONTROL PLAN
97	PHASE I - PHASE II EROSION CONTROL PLAN
98	PHASE I - PHASE II EROSION CONTROL PLAN
99	PHASE I - PHASE II EROSION CONTROL PLAN
100	PHASE I - PHASE II EROSION CONTROL PLAN

FILE NO.	S.E. LINDSEY
DATE	11/20/71
DESIGNED BY	MAC
DRAWN BY	MAC
CHECKED BY	CRB
REVISION BLOCK	
DATE	
BY	
REVISION	

PRELIMINARY

- LEGEND**
- EXISTING BRIDGE
 - PROPOSED BRIDGE
 - EXISTING RIGHT OF WAY
 - PROPOSED RIGHT OF WAY
 - EXISTING E.A.M. ACQUISITION
 - RIGHT OF CENTER TO BE ACQUIRED

FLORIDA DEPARTMENT OF TRANSPORTATION
 PROJECT NO. 2313-R-002
ORLANDO AVENUE BRIDGE REPLACEMENT
 R.O.W. LAYOUT
 SHEET 5 OF 16



EXISTING RIGHTS-OF-WAY AND PROPERTY LINES ARE READILY AVAILABLE DATA OBTAINED IN RECENT YEARS. NO BOUNDARY SURVEYS WERE PERFORMED.

CONTROL POINT TABLE

CONTROL POINT NO.	SURVEY	DATE	DESCRIPTION
CP-223	644823.28	11/15/71	437.53
CP-101	644828.28	11/15/71	437.12
CP-102	644830.28	11/15/71	437.11

CP-223 - IN AREA IN ADJACENT AREAS SET APPROXIMATELY 100 FEET FROM THE CENTERLINE OF THE BRIDGE AND ANGLE OF 90 DEGREES TO THE CENTERLINE OF THE BRIDGE.
 CP-101 - IN AREA IN ADJACENT AREAS SET APPROXIMATELY 100 FEET FROM THE CENTERLINE OF THE BRIDGE AND ANGLE OF 90 DEGREES TO THE CENTERLINE OF THE BRIDGE.
 CP-102 - IN AREA IN ADJACENT AREAS SET APPROXIMATELY 100 FEET FROM THE CENTERLINE OF THE BRIDGE AND ANGLE OF 90 DEGREES TO THE CENTERLINE OF THE BRIDGE.

R.O.W. ACQUISITION TABLE

TRACT NO.	PROPERTY OWNER	PAR. NO.	PAGE	BOOK	PAGE	COUNTY RECORDS		RIGHT OF ACQUISITION	PERMANENT ACQUISITION	RIGHT OF CENTER TO BE ACQUIRED
						INSTRUMENT NUMBER	DATE			
1	MELVIN LUTZMAN & DORIS BAKER	21-14	102	804	31	-	-	X	X	X
2	THE FIA BANK	21-14	107	674	408	-	-	X	X	X
3	J.O. JONES, JR.	21-14	103	633	342	-	-	X	X	X
4	JAMES H. & ALSTON MAHER	21-14	100	-	-	281115242202532	-	X	X	X
5	W.C. JONES, JR.	21-14	102	-	-	1007292021424	-	X	X	X