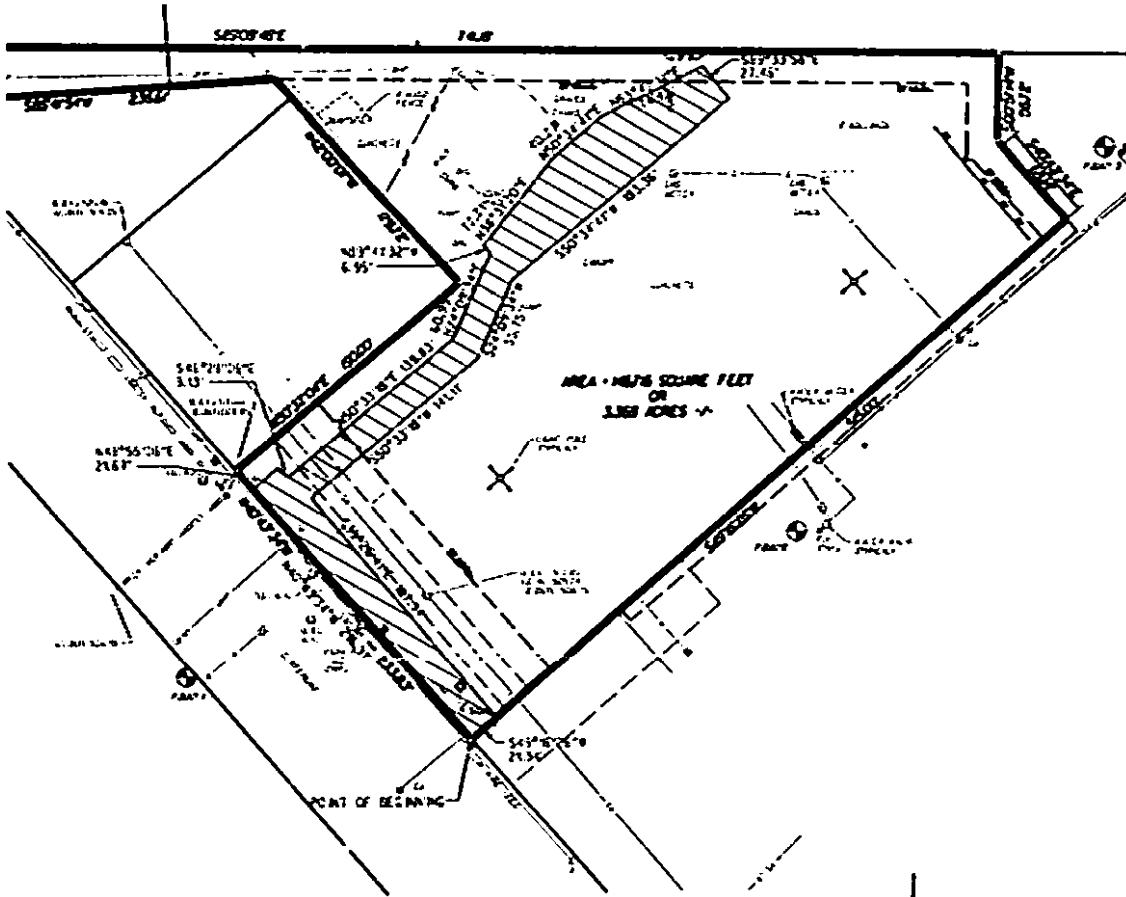


CSX RAILROAD



SHEET 1 OF 1

EXHIBIT A
 MAP SHOWING
DEDICATION OF EASEMENT
 TO METRO NASHVILLE
 DAVIDSON COUNTY, TENNESSEE
 FROM
IPF/Windlands Limited Partnership

04-01-0718

PROJECT NO. <u>2004-151</u>	EASEMENT NO. <u>1</u>	METRO NASHVILLE SYSTEM
SCALE: <u>1" = 100'</u>	MAP: <u>133</u> PAR. NO. <u>113</u>	DATE <u>7.9.04</u>
BY: <u>GRESHAM SMITH & PARTNERS</u>		