

NUMBER	DIRECTION	DISTANCE
L1	S34°10'09"W	20.00'
L2	N55°49'51"W	30.00'
L3	N34°10'09"E	20.00'
L4	S55°49'51"E	30.00'
L5	S63°43'22"W	20.00'
L6	N26°16'38"W	20.00'
L7	N63°43'22"E	20.00'
L8	S26°16'38"E	20.00'
L9	S63°44'48"W	20.00'
L10	N26°15'12"W	20.00'
L11	N63°44'48"E	20.00'
L12	S26°15'12"E	20.00'

WALLACE P. MITCHELL
 TAX MAP 33, PAGE 83
 DEED BOOK 5163, PAGE 883
 (R.O.D.C., TN)
 ZONING: CS

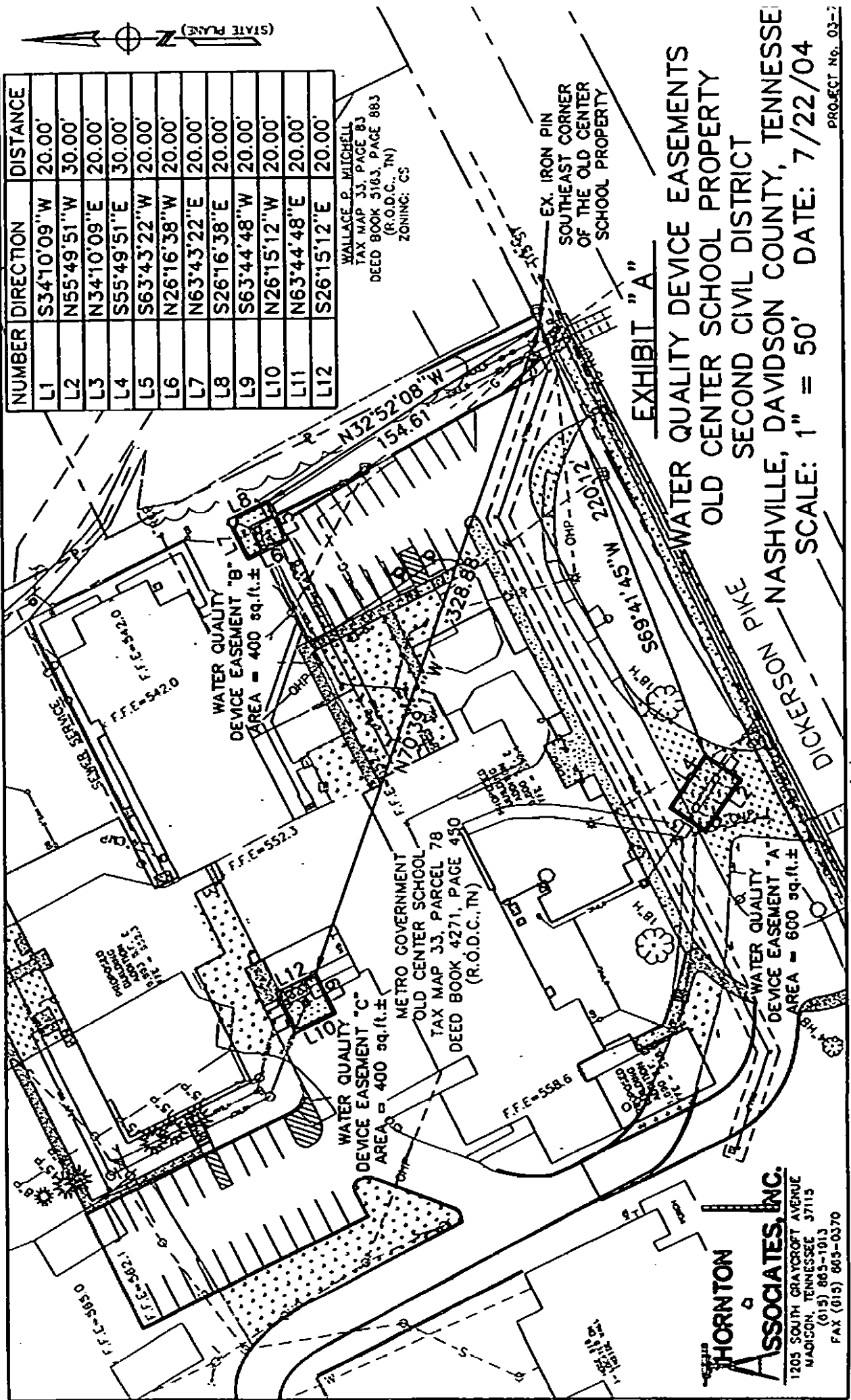


EXHIBIT "A"

WATER QUALITY DEVICE EASEMENTS
 OLD CENTER SCHOOL PROPERTY
 SECOND CIVIL DISTRICT

THORNTON ASSOCIATES, INC.
 1205 SOUTH GRAYCROFT AVENUE
 MADISON, TENNESSEE 37115
 (615) 863-1913
 FAX (615) 863-0370

NASHVILLE, DAVIDSON COUNTY, TENNESSEE
 DATE: 7/22/04
 SCALE: 1" = 50'

PROJECT NO. 03-2