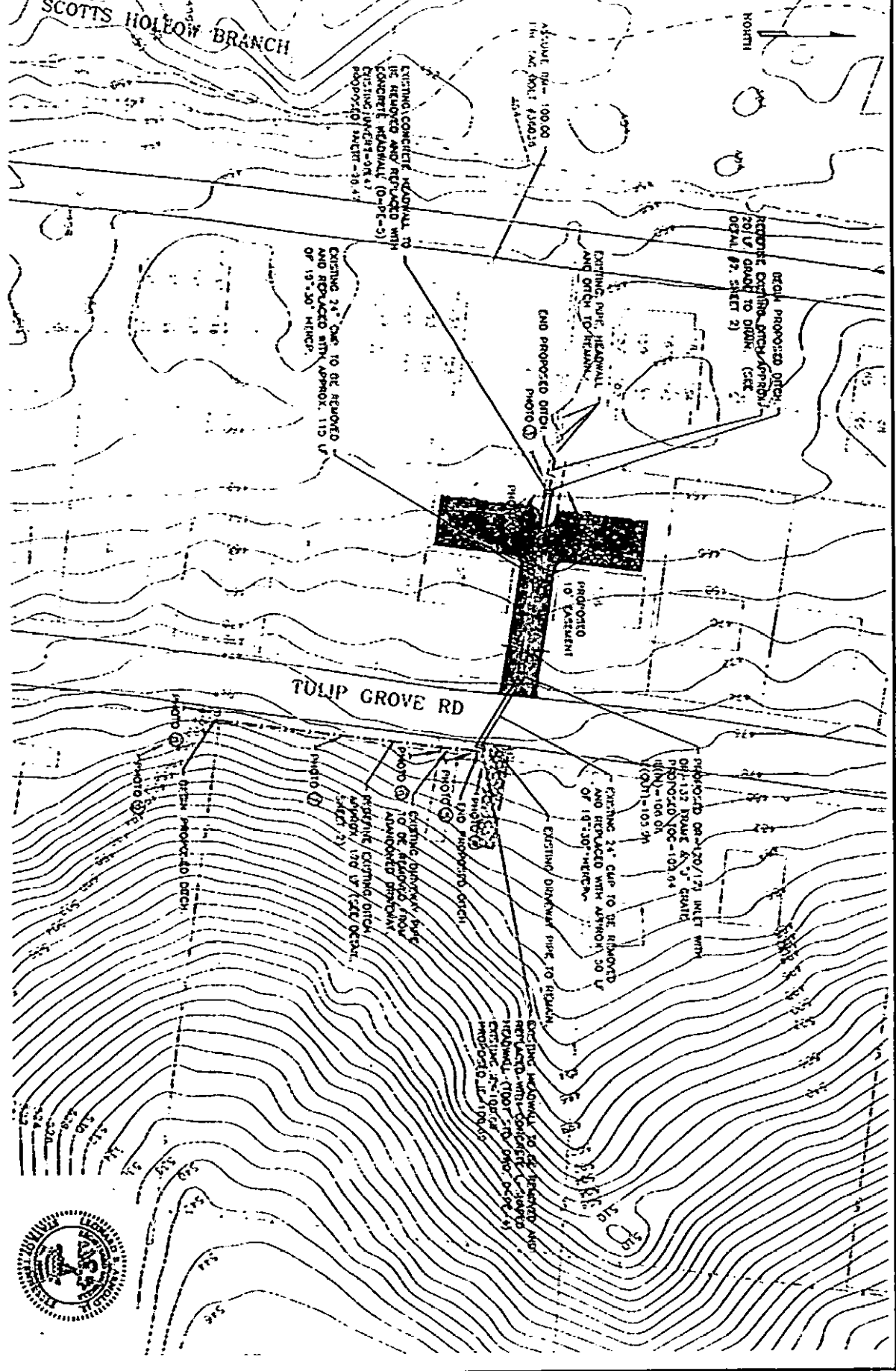


SCOTT'S HOLLOW BRANCH  
 CONCRETE GROUND OVERLAY  
 ORIGINAL DRAINWAY



	581 TULIP GROVE ROAD 04-0-0757			NO.	REVISION	BY	DATE
SITE PLAN 10/1/2010 SHEET 1 OF 1							

1-1 and 1-2



PROPOSED 20'  
PERMANENT  
DRAINAGE  
EASEMENT

SCOTTS HOLLOW BRANCH

BROOK CASTLE ROAD

POINT OF  
BEGINNING

PL

PL

BROOK CASTLE  
CONDOMINIUMS

PARAGON MANAGEMENT GROUP, INC.

MAP 900-00

PARCEL 232

PI 90000000232

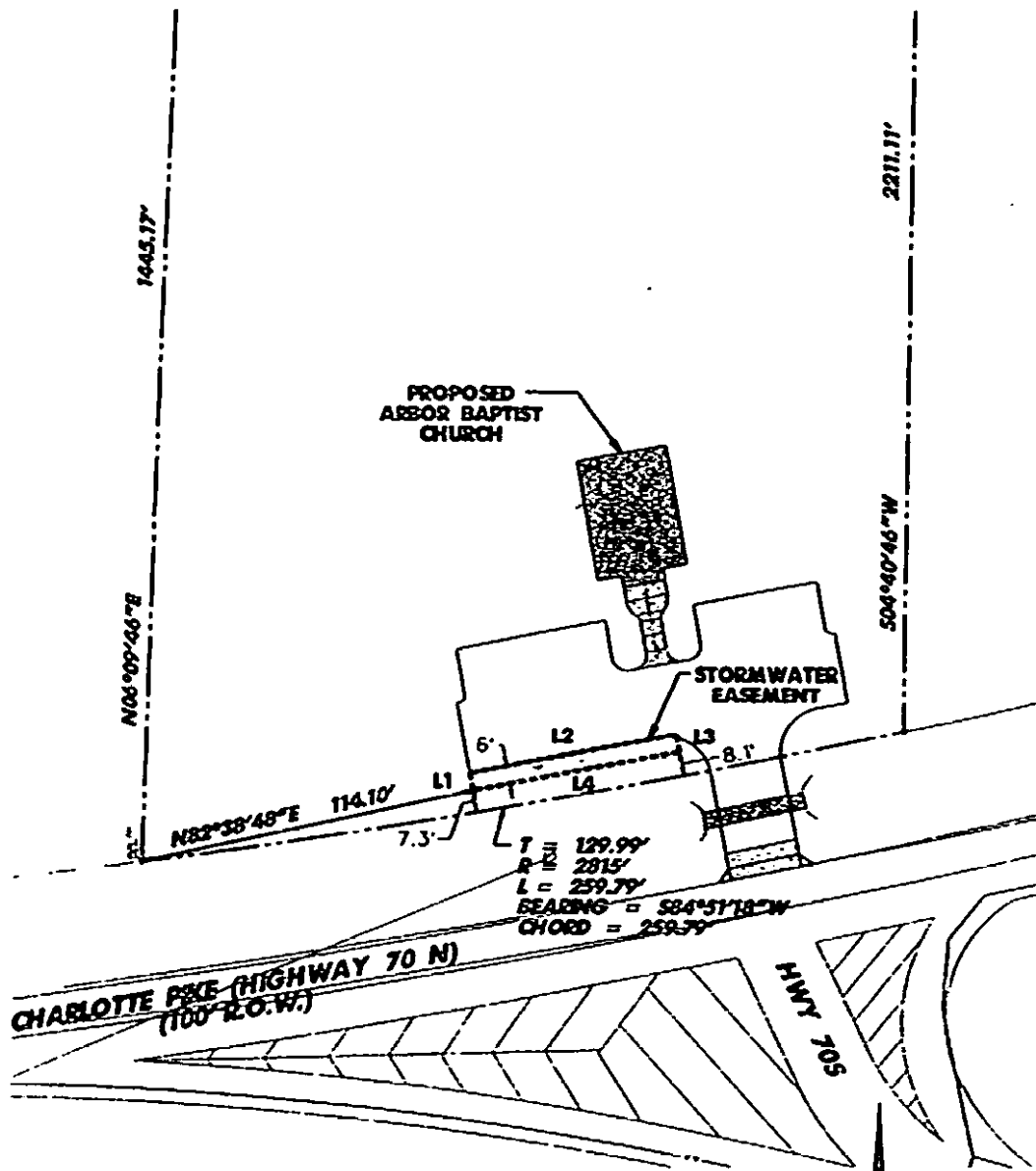
DB 6250

PG 627

MAP SHOWING  
DEDICATION OF EASEMENT  
TO THE METROPOLITAN GOVERNMENT  
OF NASHVILLE AND DAVIDSON COUNTY, TENNESSEE  
FROM  
PARAGON MANAGEMENT GROUP, INC.

PROJECT NO. 04-D-0767	EASEMENT NO. 1-3	SYSTEM
SCALE N.T.S.	PARCEL NO. 90000000232	DATE JULY 11, 2005
		BY AMEC EARTH AND ENVIRONMENTAL, INC.

MAP SHOWING DEDICATION OF EASEMENT TO THE METROPOLITAN GOVERNMENT  
OF NASHVILLE AND DAVIDSON COUNTY, TENNESSEE FROM ARBOR BAPTIST CHURCH.



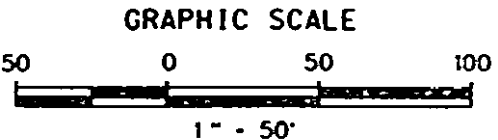
PROJECT NO. 05-DL-0822

**MAP 127  
PARCEL 290**

**OWNER**  
 ARBOR BAPTIST CHURCH  
 P.O. BOX 210467  
 NASHVILLE, TENNESSEE 37221

**SURVEYOR**  
 CRABFORD LAND SURVEYORS, P.C.  
 1929 21ST AVE. SOUTH  
 NASHVILLE, TENNESSEE 37212

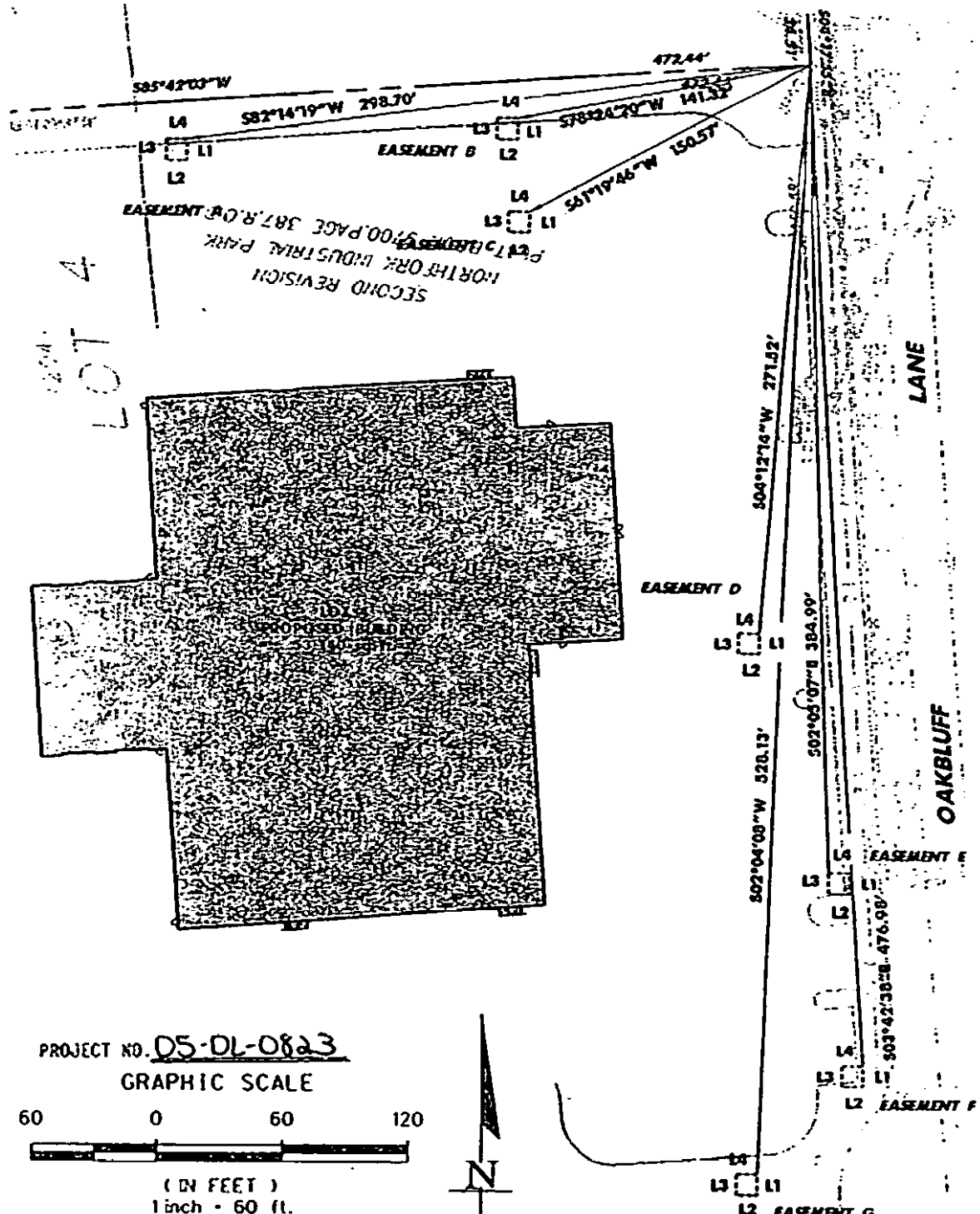
**SITE AND GRADING ENGINEER**  
 BARGE CAUTHEN & ASSOCIATES, INC.  
 95 WHITE BRIDGE ROAD, SUITE 311  
 NASHVILLE, TENNESSEE 37205



LINE	BEARING	DISTANCE
L1	N06°08'31"W	6.00'
L2	N83°51'29"E	70.68'
L3	S06°08'31"E	6.00'
L4	S83°51'29"W	70.68'

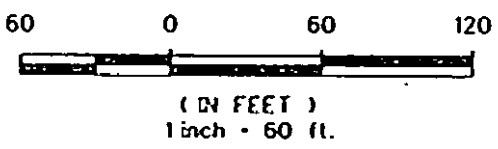
**BARGE CAUTHEN & ASSOCIATES, INC.**  
 ENGINEERS • PLANNERS • ARCHITECTS  
 LANDSCAPE ARCHITECTS  
 95 WHITE BRIDGE ROAD, SUITE 311  
 NASHVILLE, TENNESSEE 37205-1427  
 (615) 356-9727 (FAX) (615) 352-6737 (CELL)

**EXHIBIT "A"**  
**ARBOR BAPTIST CHURCH**  
**8300 HIGHWAY 70**  
 NASHVILLE, DAVIDSON COUNTY, TENNESSEE



LOT 4

PROJECT NO. 05-DL-0823  
 GRAPHIC SCALE



**DEED BOOK 9931, PAGE 504  
 MAP 12-15-A, PARCEL 204,  
 ZONE IR**

**OWNER**  
 NORTHFORK PROPERTIES, INC.  
 6311 EAST VALLEY ROAD  
 NASHVILLE, TENNESSEE 37205

**SURVEY PREPARED BY**  
 CRANTFORD LAND SURVEYORS, P.C.  
 1929 21ST AVENUE SOUTH  
 NASHVILLE, TENNESSEE 37212

**PREPARED BY**  
 BARGE CAUTHEN & ASSOCIATES, INC.  
 95 WHITE BRIDGE ROAD, SUITE 311  
 NASHVILLE, TENNESSEE 37205

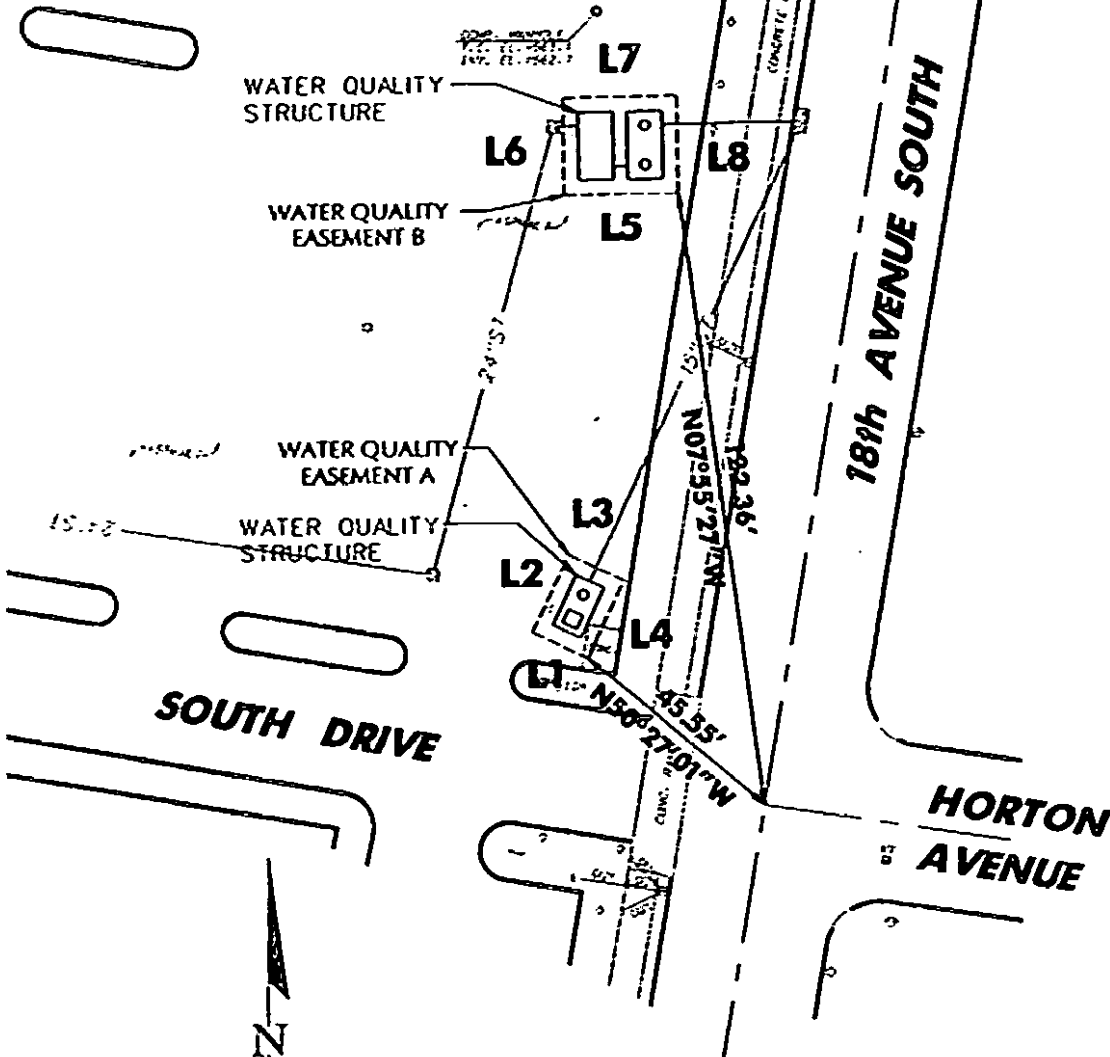


LINE	BEARING	DISTANCE
L1	S00°00'00"E	10.00' (TYPICAL)
L2	N90°00'00"W	10.00' (TYPICAL)
L3	N00°00'00"E	10.00' (TYPICAL)
L4	N90°00'00"E	10.00' (TYPICAL)

**BARGE CAUTHEN & ASSOCIATES, INC.**  
 ENGINEERS • PLANNERS • ARCHITECTS  
 LANDSCAPE ARCHITECTS  
 95 WHITE BRIDGE ROAD SUITE 311  
 NASHVILLE, TENNESSEE 37205-7427  
 (615) 254-9723 (FAX) (615) 552-4737 (CELL)

**EXHIBIT "A"**  
 A NEW DISTRIBUTION FACILITY  
**KEY OIL COMPANY**  
 NASHVILLE DAVIDSON COUNTY TENNESSEE

HILL STUDENT CENTER



LINE BEARING DISTANCE

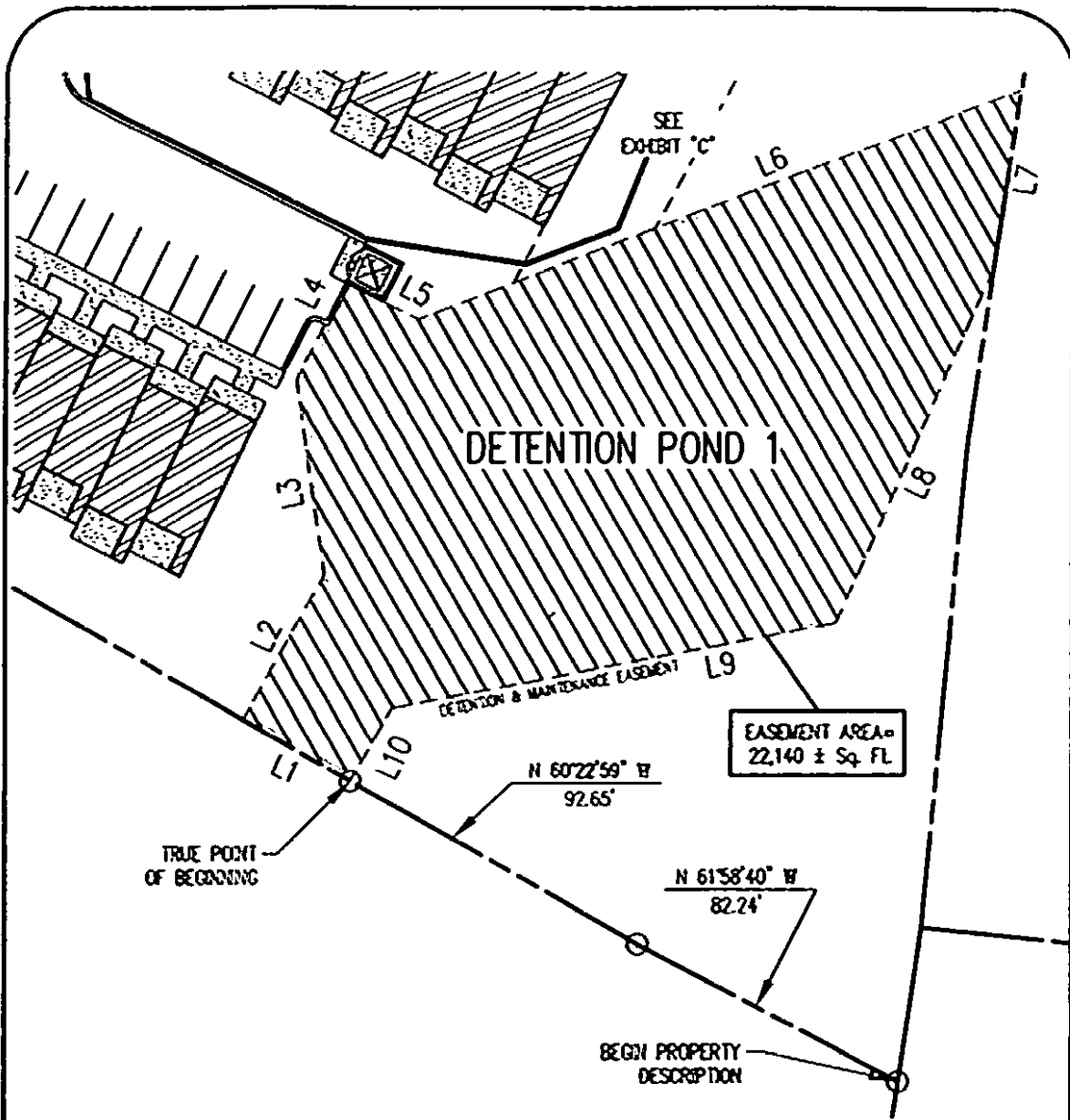
LINE	BEARING	DISTANCE
L1	N65°01'00"W	12.20'
L2	N24°59'00"E	17.00'
L3	S65°01'00"E	12.20'
L4	S24°59'00"W	17.00'
L5	S89°04'55"W	22.78'
L6	N00°55'05"W	19.00'
L7	N89°04'55"E	22.78'
L8	S00°55'05"E	19.00'

SITE AND GRADING ENGINEER  
 BARGE CAUTHEN & ASSOCIATES, INC.  
 95 WHITE BRIDGE ROAD, SUITE 311  
 NASHVILLE, TENNESSEE 37205

MAP 104-08, PARCEL 196  
 ZONE ORI

**BARGE CAUTHEN & ASSOCIATES, INC.**  
 ENGINEERS • PLANNERS • ARCHITECTS  
 LANDSCAPE ARCHITECTS  
 95 WHITE BRIDGE ROAD SUITE 311  
 NASHVILLE, TENNESSEE 37205-1177  
 (615) 254-9733 (FAX) (615) 352-6737 (CELL)

**EXHIBIT "A"**  
 Pezbody Freshman Commons  
**Vanderbilt University**  
 Phase 1A  
 NASHVILLE, DAVIDSON COUNTY, TENNESSEE



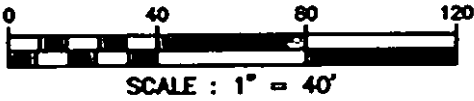
EASEMENT AREA =  
22,140 ± Sq. FL.

LINE TABLE

L #	BEARING	LENGTH
L1	N 60°22'59" W	35.00'
L2	N 60°22'59" E	46.47'
L3	N 08°13'33" W	55.34'
L4	N 63°26'49" E	30.39'
L5	S 63°26'49" E	22.85'
L6	N 21°13'30" E	180.31'
L7	S 81°50'06" W	51.30'
L8	S 66°10'37" W	109.05'
L9	S 10°54'36" W	126.12'
L10	S 60°22'59" W	23.37'



EXHIBIT "A"



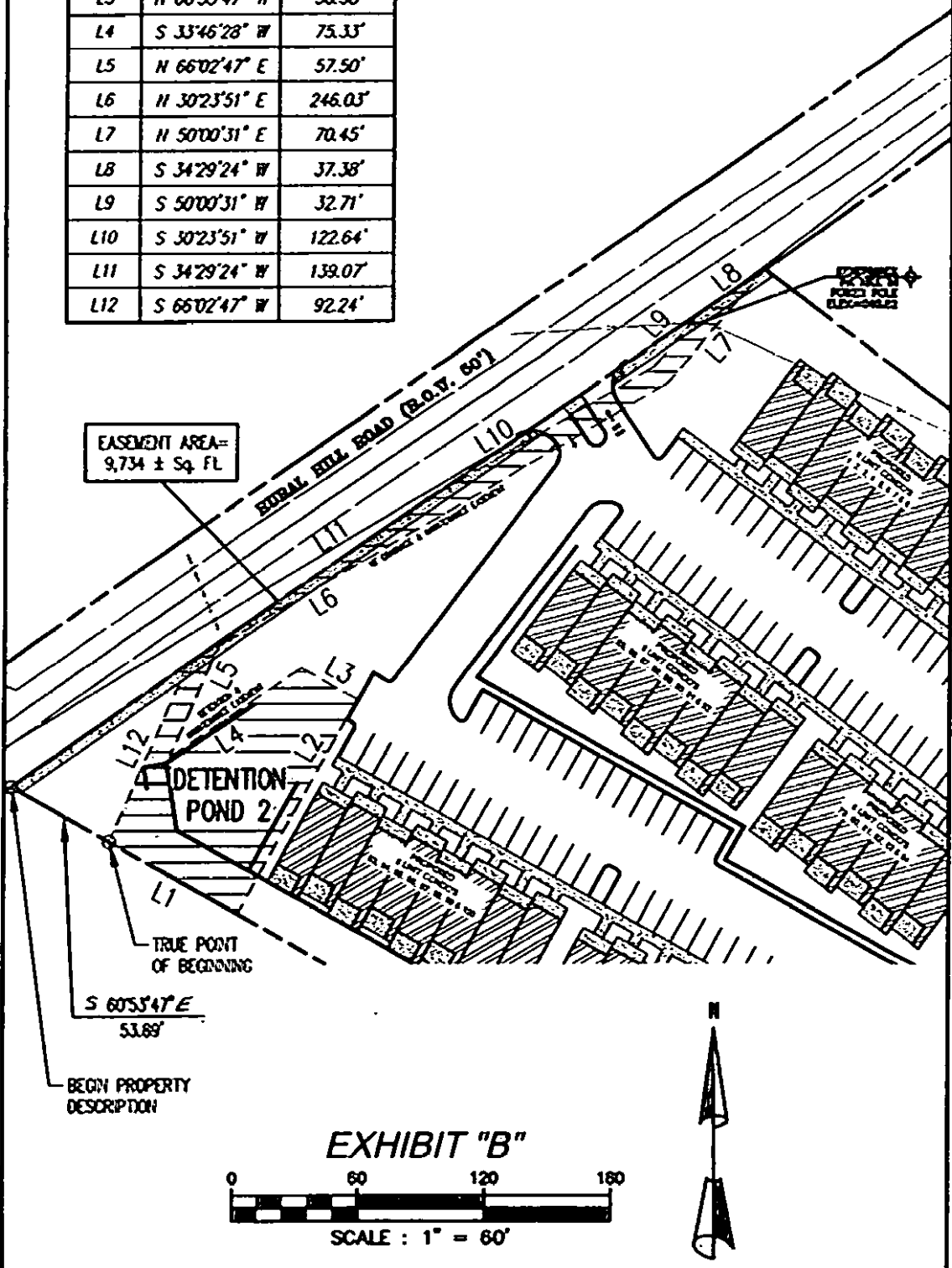
MAP SHOWING  
DEDICATION OF DRAINAGE EASEMENT  
TO THE METROPOLITAN DEPARTMENT OF WATER AND SEWERAGE SERVICES  
FROM COLEMAN LAKE PARTNERS, LLC

05-0L-0825

PROJECT NO.	EASEMENT NO. 1-1	BY: BATSON & ASSOCIATES, INC.
MAP NO. 163	PARCEL NO. 96.01	DATE: 7 APR 2005

LINE TABLE

L #	BEARING	LENGTH
L1	S 61°42'00" E	70.52'
L2	N 60°53'47" E	116.30'
L3	N 60°53'47" W	30.58'
L4	S 33°46'28" W	75.33'
L5	N 66°02'47" E	57.50'
L6	N 30°23'51" E	246.03'
L7	N 50°00'31" E	70.45'
L8	S 34°29'24" W	37.38'
L9	S 50°00'31" W	32.71'
L10	S 30°23'51" W	122.64'
L11	S 34°29'24" W	139.07'
L12	S 66°02'47" W	92.24'



EASEMENT AREA =  
9,734 ± Sq. Ft.

DETENTION  
POND 2

TRUE POINT  
OF BEGINNING

S 60°53'47" E  
53.89'

BEGIN PROPERTY  
DESCRIPTION

EXHIBIT "B"



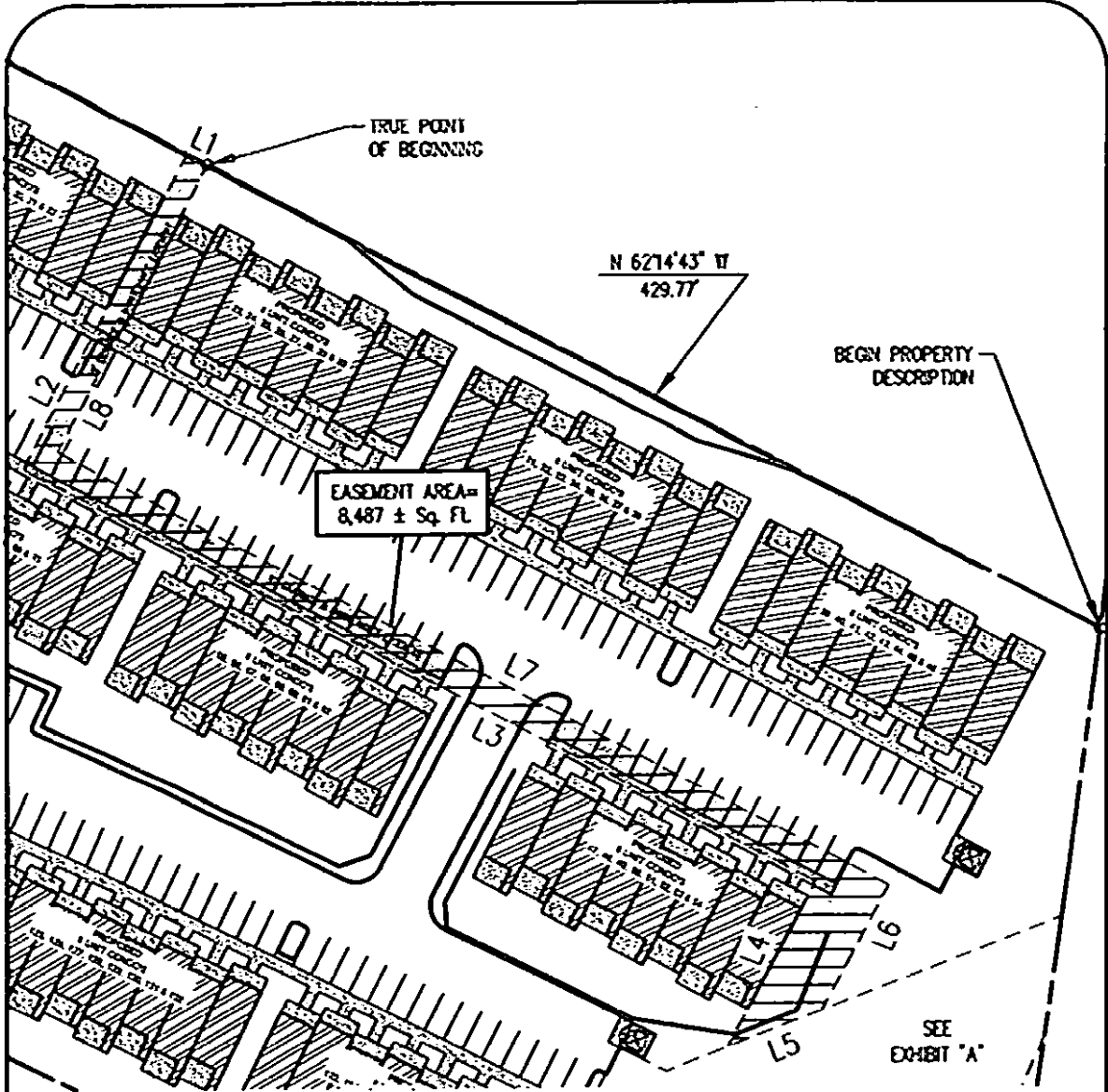
SCALE : 1" = 60'



MAP SHOWING  
DEDICATION OF DRAINAGE EASEMENT  
TO THE METROPOLITAN DEPARTMENT OF WATER AND SEWERAGE SERVICES  
FROM COLEMAN LAKE PARTNERS, LLC

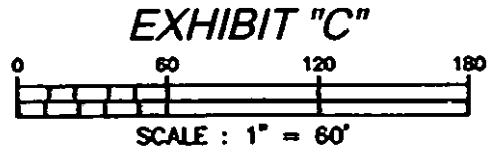
05-DL-0825

PROJECT NO.	EASEMENT NO. 1-2	BY: BATSON & ASSOCIATES, INC.
MAP NO. 163	PARCEL NO. 96.01	DATE: 13 APR 2005



LINE TABLE

L #	BEARING	LENGTH
L1	N 62°14'43" W	10.00'
L2	S 62°12'48" W	151.30'
L3	S 62°14'43" E	382.45'
L4	S 62°14'43" W	79.26'
L5	N 21°3'30" E	42.66'
L6	N 62°14'43" E	60.07'
L7	N 62°14'43" W	400.45'
L8	N 62°12'48" E	138.30'



MAP SHOWING  
 DEDICATION OF DRAINAGE EASEMENT  
 TO THE METROPOLITAN DEPARTMENT OF WATER AND SEWERAGE SERVICES  
 FROM COLEMAN LAKE PARTNERS, LLC

05-0L-0825

PROJECT NO.

EASEMENT NO. 1-3

BY: BATSON & ASSOCIATES, INC.

MAP NO. 163

PARCEL NO. 96.01

DATE: 12 APR 2005

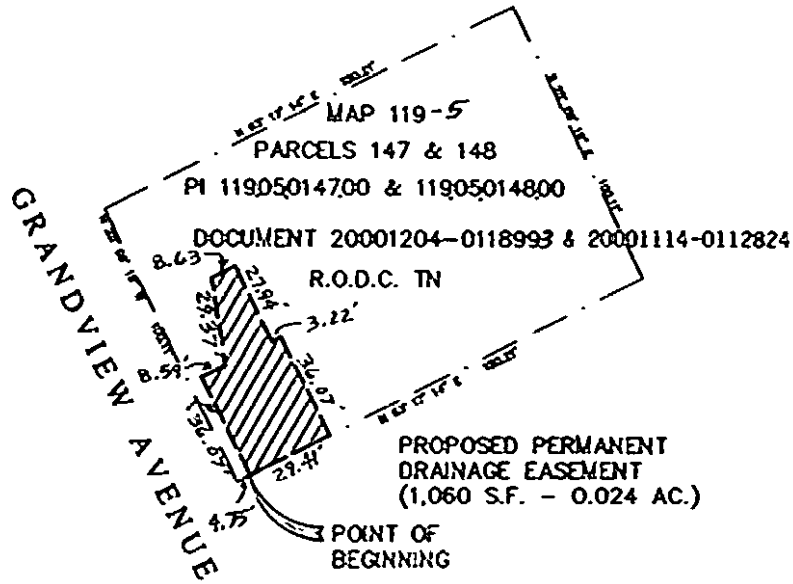




2610 GRANDVIEW AVENUE

SAN ANTONIO CORPORATION

LOTS 495 & 496  
GRANDVIEW HEIGHTS



MAP SHOWING  
DEDICATION OF EASEMENT  
TO THE METROPOLITAN GOVERNMENT  
OF NASHVILLE AND DAVIDSON COUNTY, TENNESSEE  
FROM  
SAN ANTONIO CORPORATION

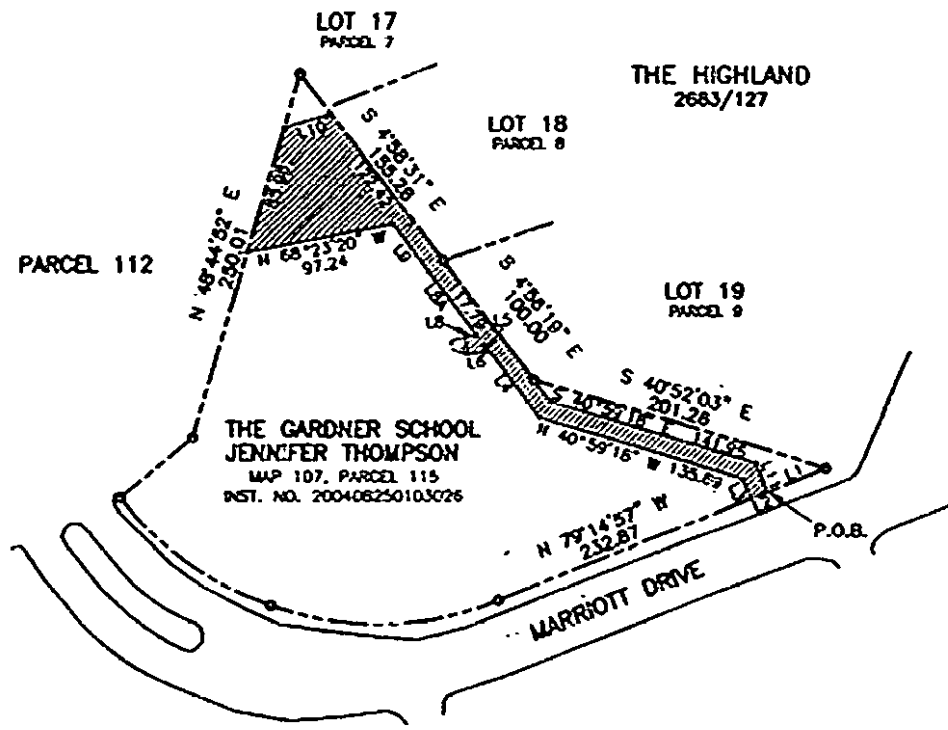
PROJECT NO. 05-OL-0826 EASEMENT NO. 1-1 STORMWATER SYSTEM

SCALE: 1" = 50'

MAP AND  
PARCEL NO. 11905014700  
11905014800

DATE: APRIL 18, 2005

BY: AZMTECH ENGINEERING



LINE	BEARING	DISTANCE
L1	N 79°14'57" W	41.49
L2	N 79°12'57" W	12.00
L3	N 10°45'03" E	14.10
L4	N 04°56'19" W	60.71
L5	S 28°41'27" W	5.28
L6	N 61°18'33" W	12.00
L7	N 28°41'27" E	12.00
L8	S 61°18'33" E	7.51
L8A	N 04°56'19" W	52.88
L9	N 04°58'31" W	39.11
L10	S 74°28'33" E	31.65
L11	S 10°45'03" W	19.92

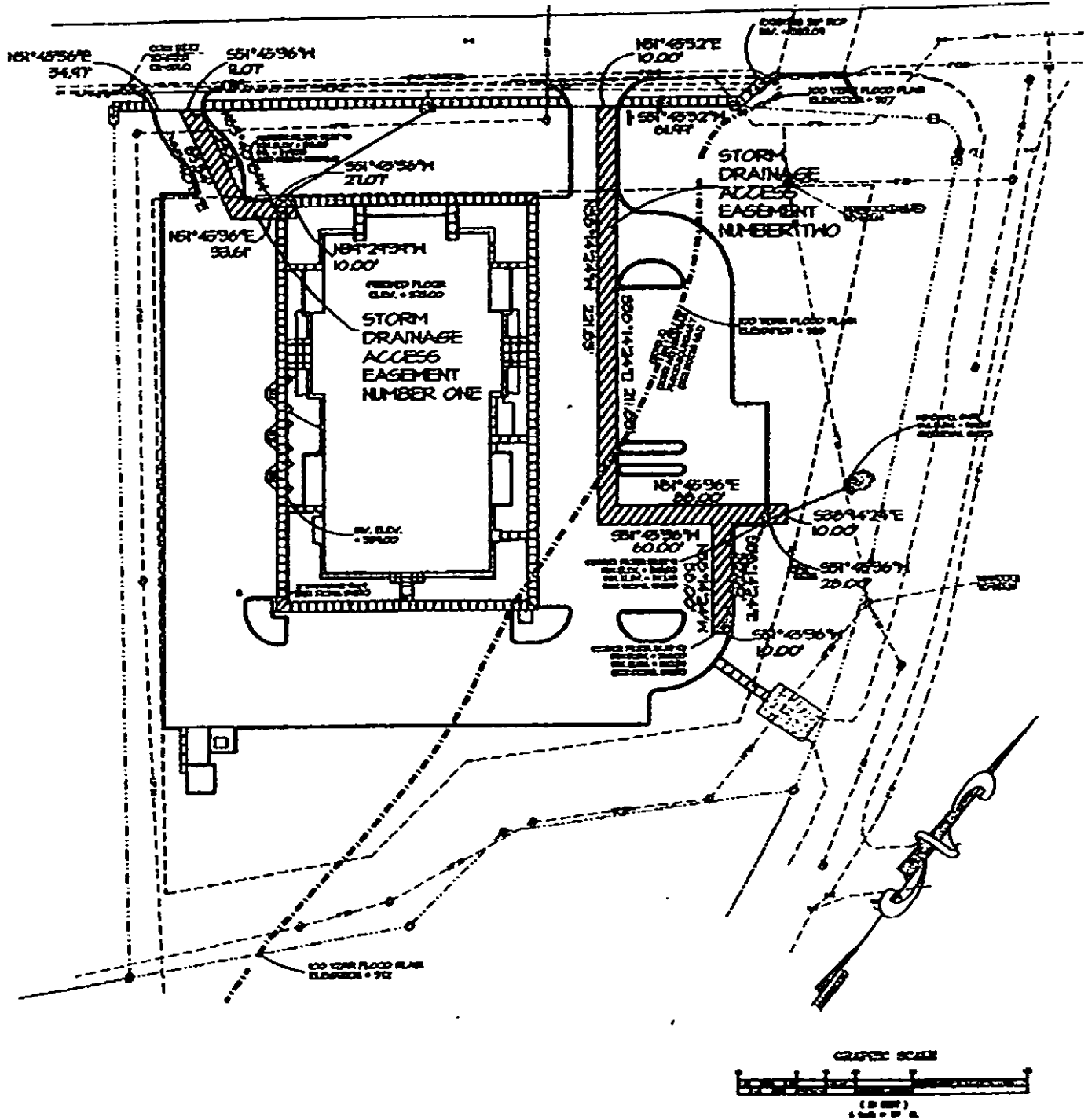
**MAP SHOWING**

DEDICATION OF EASEMENT  
 TO THE METROPOLITAN GOVERNMENT  
 OF NASHVILLE AND DAVIDSON COUNTY, TENNESSEE  
 FROM THE GARDNER SCHOOL (JENNIFER THOMPSON)

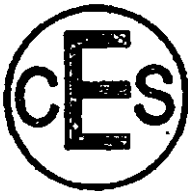
SCALE :  $1" = 100'$  PARCEL NO. 107-115 DATE : 4-25-05 BY : TMR

Project No. 05-DL-0830

HILLSBORO PIKE



Project No. 05-DL-0831



**Civil Engineering Services**

709 Race Road  
 Oklaon, Tennessee  
 37065

phone: (615) 533-0431  
 fax: (615) 328-0177  
 e-mail: ceservices@cs-engineering.com

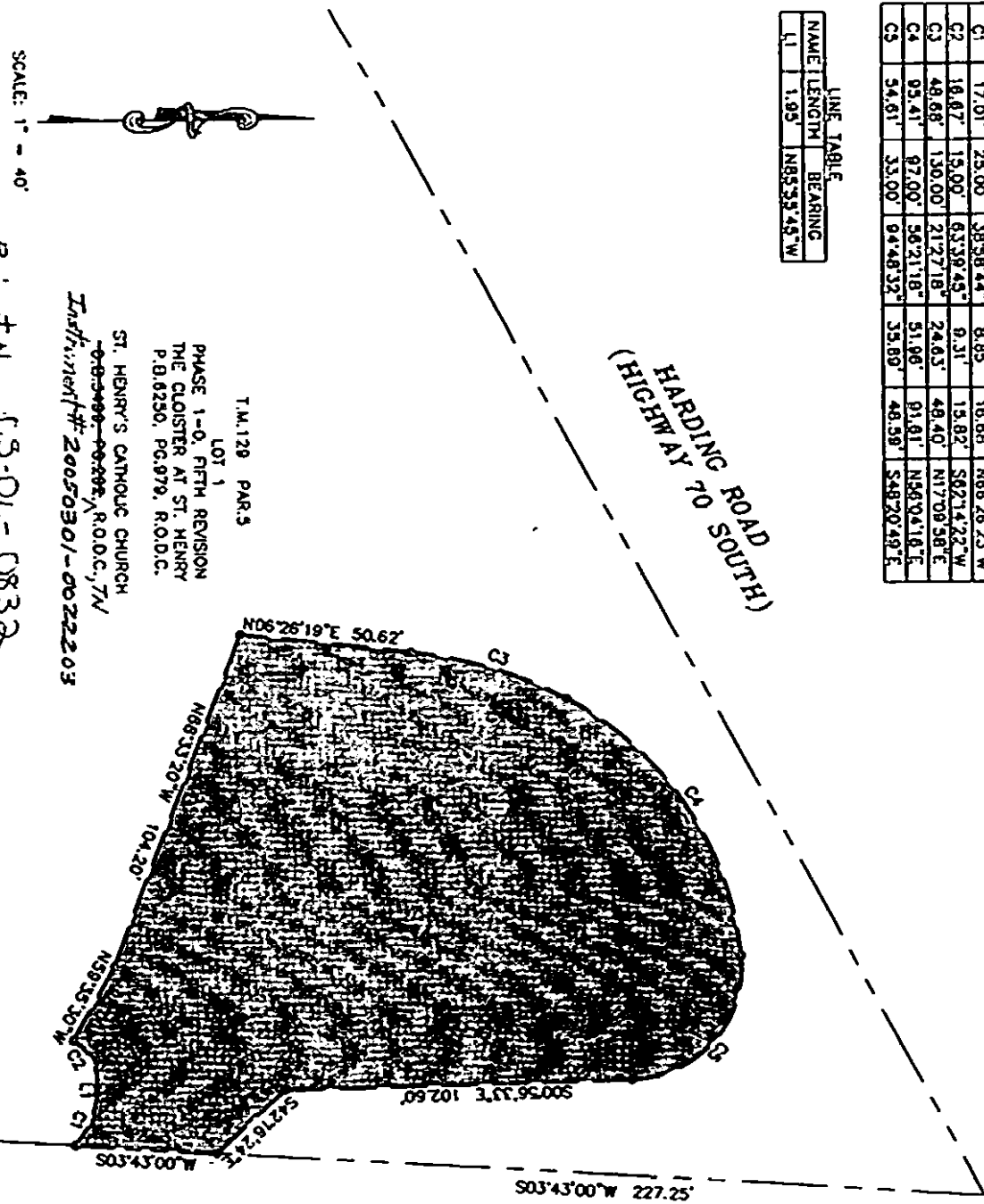
**Engineering, Land Planning**

REVISIONS	DATE

NAME	LENGTH	RADIUS	DELTA	TANGENT	CHORD	CHD. BEARING
C1	17.01'	25.00'	38.98°44'	8.65'	16.68'	N66°26'23"W
C2	16.67'	15.00'	63.39°45'	9.31'	15.82'	S62°14'22"W
C3	48.68'	150.00'	21°27'18"	24.63'	48.40'	N17°06'58"E
C4	95.41'	97.00'	56°21'18"	51.96'	91.81'	N96°04'18"E
C5	54.61'	33.00'	84°48'32"	35.89'	48.59'	S48°20'49"E

NAME	LENGTH	BEARING
L1	1.95'	N85°35'45"W

HARDING ROAD SOUTH  
(HIGHWAY 70 SOUTH)



SCALE: 1" = 40'

Project No. CS-OL-0832

T.M. 128 PAR. 5  
LOT 1  
PHASE 1-0, FIFTH REVISION  
THE CLOISTER AT ST. HENRY  
P.B. 6250, PG. 979, R.O.D.C.  
ST. HENRY'S CATHOLIC CHURCH  
~~08-0000-00-000~~ R.O.D.C., TN/  
Instrument # 20050301-0022203

DRAINAGE  
EASEMENT  
EXHIBIT

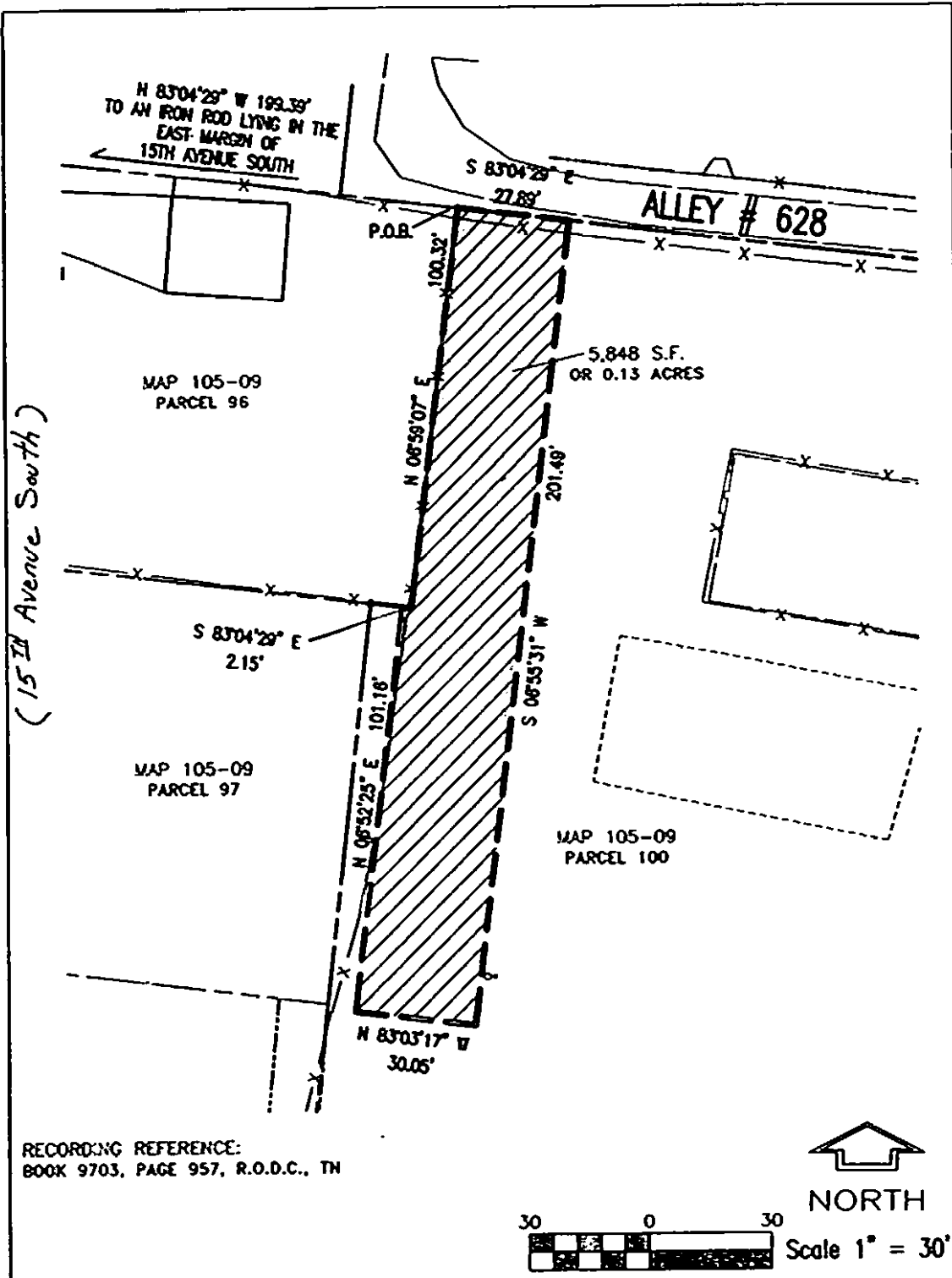
NO.	REVISION	DATE

FORNICK &  
ASSOCIATES  
ARCHITECTS, INC.  
3207 OAKSHURR RD  
SUITE 200  
NASHVILLE, TN  
37203

ST. HENRY  
CATHOLIC CHURCH  
NASHVILLE, DAVIDSON COUNTY, TENNESSEE

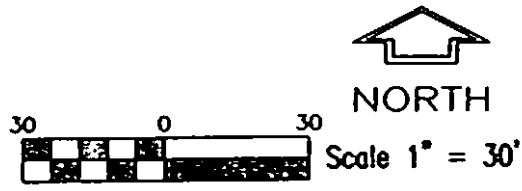
LITTLETON  
ENGINEERING  
ASSOCIATES  
REGISTERED PROFESSIONAL ENGINEERS  
STATE OF TENNESSEE  
No. 27758 - R0123





(15th Avenue South)

RECORDING REFERENCE:  
BOOK 9703, PAGE 957, R.O.D.C., TN



MAP SHOWING  
**DEDICATION OF EASEMENT**  
TO THE METROPOLITAN GOVERNMENT  
OF NASHVILLE AND DAVIDSON COUNTY

FROM  
BELMONT UNIVERSITY

05-DL-C833

PROJECT NO	N/A	EASEMENT NO	1	BELMONT	SYSTEM
SCALE	1"=30'	MAP 105-09 PARCEL	100	DATE	5/16/05
		BY	WEATHERFORD		