

AREA=4938 SQ. FT. OR 0.11 ACRES±

MAP SHOWING
PUBLIC DRAINAGE, DETENTION, AND
WATER QUALITY EASEMENT ON
LOT 2
OF THE UNIFIED PLAT OF
SUBDIVISION & CONSOLIDATION OF
BELLE MEADE THEATRE
FIRST CIVIL DISTRICT
TWENTY-FOURTH COUNCILMANIC
DAVIDSON COUNTY, TENNESSEE

BWSC
 BARGE WAGGONER SUMNER & CANNON, INC.
 23 Commerce Street, Suite 800 Nashville, Tennessee 37203
 PHONE (615) 254-6500 FAX (615) 255-6572
 ENGINEERS ARCHITECTS PLANNERS LANDSCAPE ARCHITECTS SURVEYORS

PROJECT NO. 04649-04	PROPERTY MAP NO. 116-3	PARCEL NO. 151
SCALE: 1"=30'	DATE: 12/26/06	CHK. BY: JLJ
		BY: BARGE, WAGGONER, SUMNER AND CANNON, INC.

07-PL-0023 Easement No. 1-1

INSTRUMENT #200103130024005
MAP 68, PARCEL 29

OWNER
PONDIGGER PROPERTIES, LLC
P.O. BOX 363
255 WILSON PIKE CIRCLE
BRENTWOOD, TENNESSEE 37027

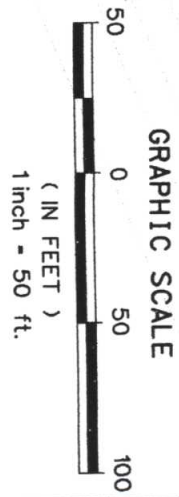
SURVEY PREPARED BY
CHERRY LAND SURVEYING, INC.
622 WEST IRIS DRIVE
NASHVILLE, TENNESSEE 37204

PREPARED BY
BARGE CAUTHEN & ASSOCIATES, INC.
95 WHITE BRIDGE ROAD, SUITE 311
NASHVILLE, TENNESSEE 37205

TO MAINTENANCE FACILITY



Ashland City Highway



Project No. 07-DL-0025

BARGE CAUTHEN & ASSOCIATES, INC.
ENGINEERS • PLANNERS • ARCHITECTS
LANDSCAPE ARCHITECTS
95 WHITE BRIDGE ROAD SUITE 311
NASHVILLE, TENNESSEE 37205-1427
(615) 356-9911 (PHONE) (615) 352-6737 (FAX)
BCA JOB NO. 2328-01

EXHIBIT "A"
MAINTENANCE FACILITY FOR
PONDIGGER PROPERTIES, LLC
NASHVILLE, DAVIDSON COUNTY, TENNESSEE

Easement
No. 1-1

**INSTRUMENT #200103130024005
MAP 68, PARCEL 29**

OWNER

PONDDIGGER PROPERTIES, LLC
P.O. BOX 363
255 WILSON PIKE CIRCLE
BRENTWOOD, TENNESSEE 37027

SURVEY PREPARED BY

CHERRY LAND SURVEYING, INC.
622 WEST IRIS DRIVE
NASHVILLE, TENNESSEE 37204

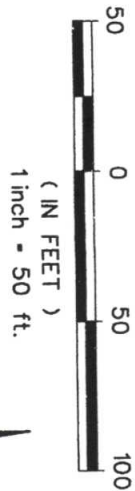
PREPARED BY

BARGE CAUTHEN & ASSOCIATES, INC.
95 WHITE BRIDGE ROAD, SUITE 311
NASHVILLE, TENNESSEE 37205

511.53' TO REFERENCE POINT.



STORMWATER QUALITY AND
DETENTION EASEMENT "B"



GRAPHIC SCALE

Ashtland City Highway



TO ENTRY AT
AMY LYNN DRIVE

Project No. 07-DL-0025

BARGE CAUTHEN & ASSOCIATES, INC.

ENGINEERS • PLANNERS • ARCHITECTS
LANDSCAPE ARCHITECTS
95 WHITE BRIDGE ROAD SUITE 311
NASHVILLE, TENNESSEE 37205-1427
(615) 356-9911 (PHONE) (615) 352-6737 (FAX)
BCA JOB NO. 2328-01

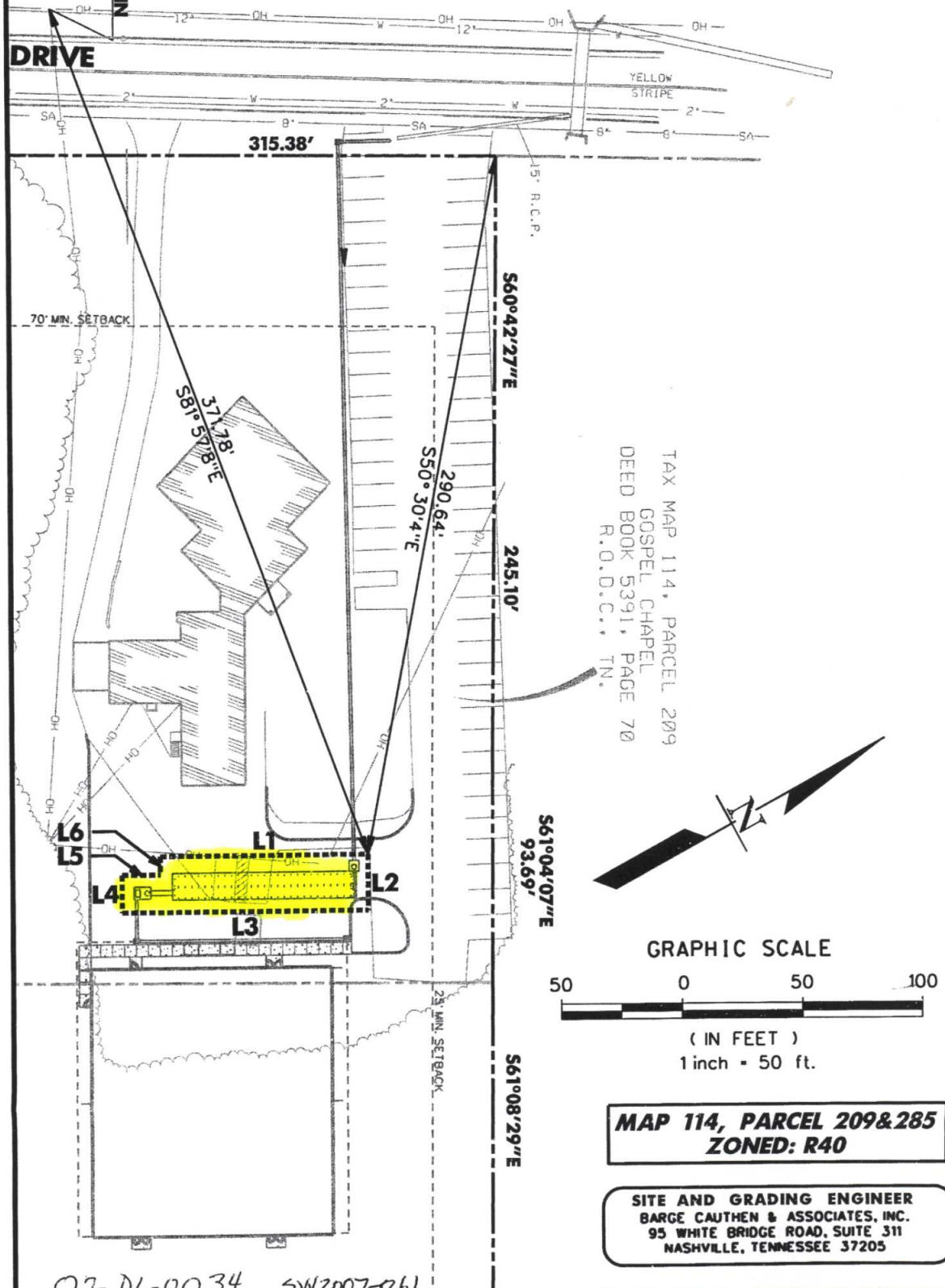
EXHIBIT "B"

MAINTENANCE FACILITY FOR
PONDDIGGER PROPERTIES, LLC
NASHVILLE, DAVIDSON COUNTY, TENNESSEE

Easement
No. 1-1

LINE	BEARING	DISTANCE
L1	N28°34'11"E	86.5'
L2	S61°25'49"E	23.0'
L3	S28°34'11"W	102.5'
L4	N61°25'49"W	15.5'
L5	N28°34'11"E	16.0'
L6	N61°25'49"W	7.5'

BM-PK NAIL IN
POWER POLE
EL.=527.92
(NAVD 88)



**MAP 114, PARCEL 209&285
ZONED: R40**

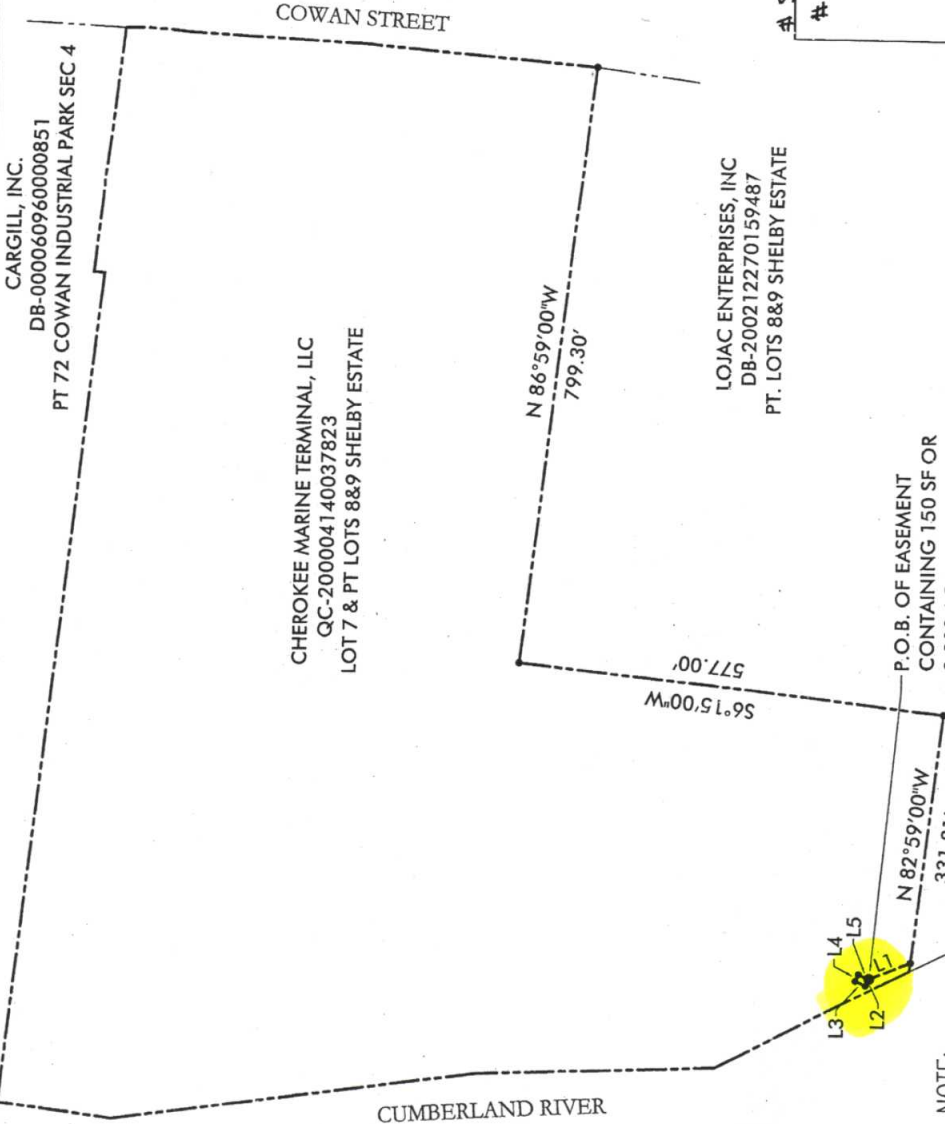
**SITE AND GRADING ENGINEER
BARGE CAUTHEN & ASSOCIATES, INC.
95 WHITE BRIDGE ROAD, SUITE 311
NASHVILLE, TENNESSEE 37205**

07-DL-0034 SN2007-061

BARGE CAUTHEN & ASSOCIATES, INC.
ENGINEERS • PLANNERS • ARCHITECTS
LANDSCAPE ARCHITECTS
95 WHITE BRIDGE ROAD SUITE 311
NASHVILLE, TENNESSEE 37205-1427
(615) 356-9911 (PHONE) (615) 352-6737 (FAX)
BCA JOB NO. 2450-01-03

EXHIBIT "A"
GOSPEL CHAPEL EXPANSION
NASHVILLE, DAVIDSON COUNTY, TENNESSEE

EASE-
MENT
1-1



CARGILL, INC.
DB-000060960000851
PT 72 COWAN INDUSTRIAL PARK SEC 4

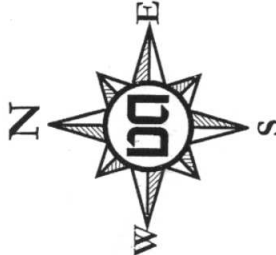
CHEROKEE MARINE TERMINAL, LLC
QC-200004140037823
LOT 7 & PT LOTS 8&9 SHELBY ESTATE

LOJAC ENTERPRISES, INC
DB-200212270159487
PT. LOTS 8&9 SHELBY ESTATE

P.O.B. OF EASEMENT
CONTAINING 150 SF OR
0.003 AC

NOTE:
A BLANKET ACCESS EASEMENT IS GRANTED TO ACCESS AND MAINTAIN IMPROVEMENTS IN PUBLIC DRAINAGE EASEMENTS.

LINE NUMBER	DIRECTION	LENGTH
L1	N22°26'27"W	60.36 FT
L2	N65°22'02"W	10.00 FT
L3	N24°37'58"E	15.00 FT
L4	S65°22'02"E	10.00 FT
L5	S24°37'58"W	15.00 FT

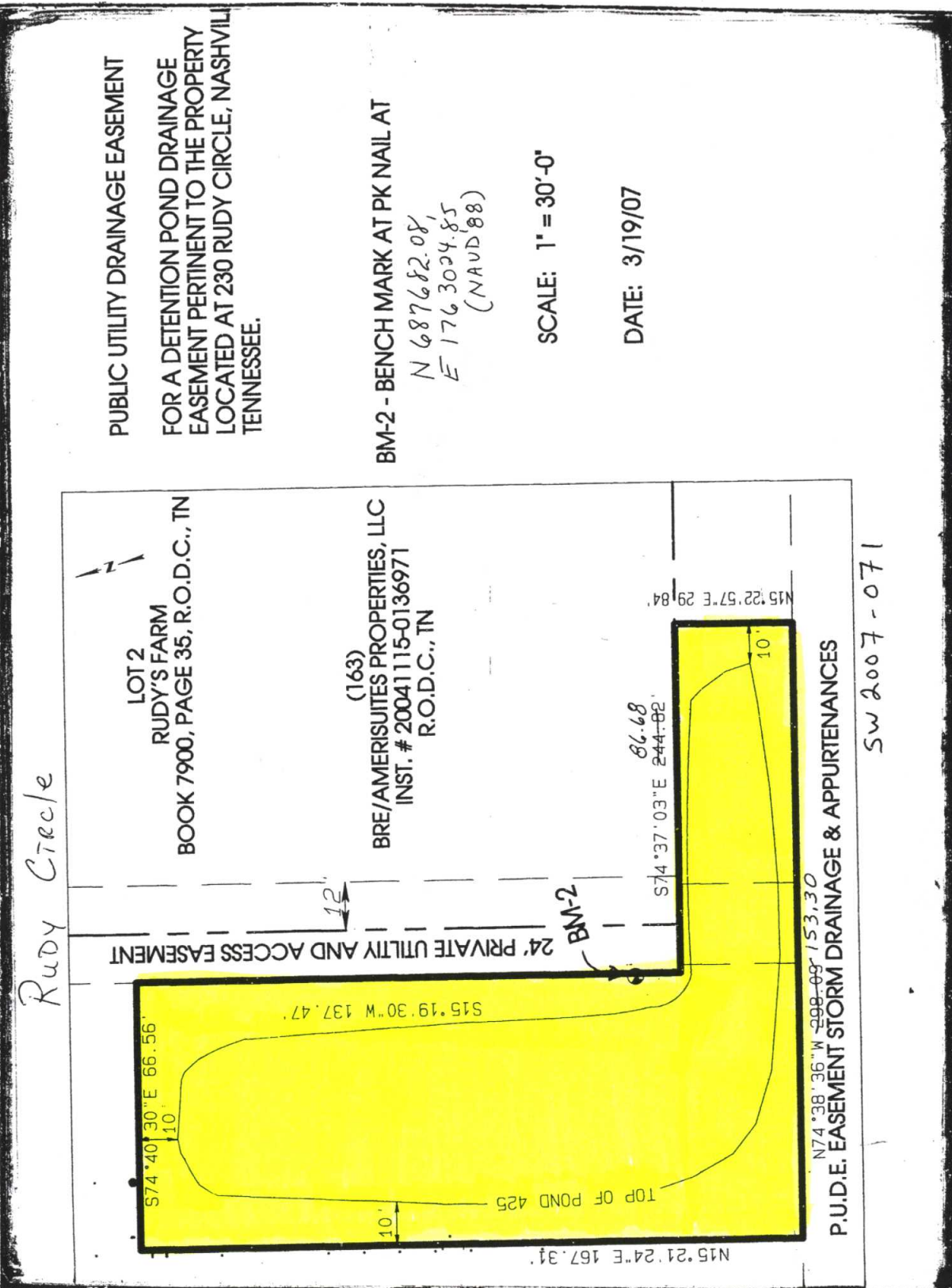


SCALE: 1" = 200'

SW2007-004 # 9529 MAP SHOWING R1-2/1/07

DEDICATION OF EASEMENT
TO THE METROPOLITAN GOVERNMENT
OF NASHVILLE AND DAVIDSON COUNTY, TENNESSEE
FROM
CHEROKEE MARINE TERMINAL, LLC

PROJECT NO. 07-DL-0035 EASEMENT NO. 1-1 STORM SYSTEM
SCALE: 1"=200' MAP NO. 82.10 PARCEL NO. 5 BY: DALE & ASSOCIATES, INC.



PUBLIC UTILITY DRAINAGE EASEMENT
FOR A DETENTION POND DRAINAGE
EASEMENT PERTINENT TO THE PROPERTY
LOCATED AT 230 RUDY CIRCLE, NASHVILLE
TENNESSEE.

BM-2 - BENCH MARK AT PK NAIL AT
N 687682.08'
E 1763024.85'
(NAVD'88)

SCALE: 1" = 30'-0"
DATE: 3/19/07

MAP SHOWING
DEDICATION OF EASEMENT
TO THE METROPOLITAN GOVERNMENT
OF NASHVILLE AND DAVIDSON COUNTY, TENNESSEE
FROM
Pinnacle Hospitality PARTNERS

PROJECT NO. <i>07-DL-36</i>	EASEMENT NO. <i>1-1</i>	SYSTEM
SCALE <i>1" = 30'</i>	PARCEL NO. <i>62-0-164</i>	DATE <i>3/27/07</i>
		BY <i>PDR ENG.</i>



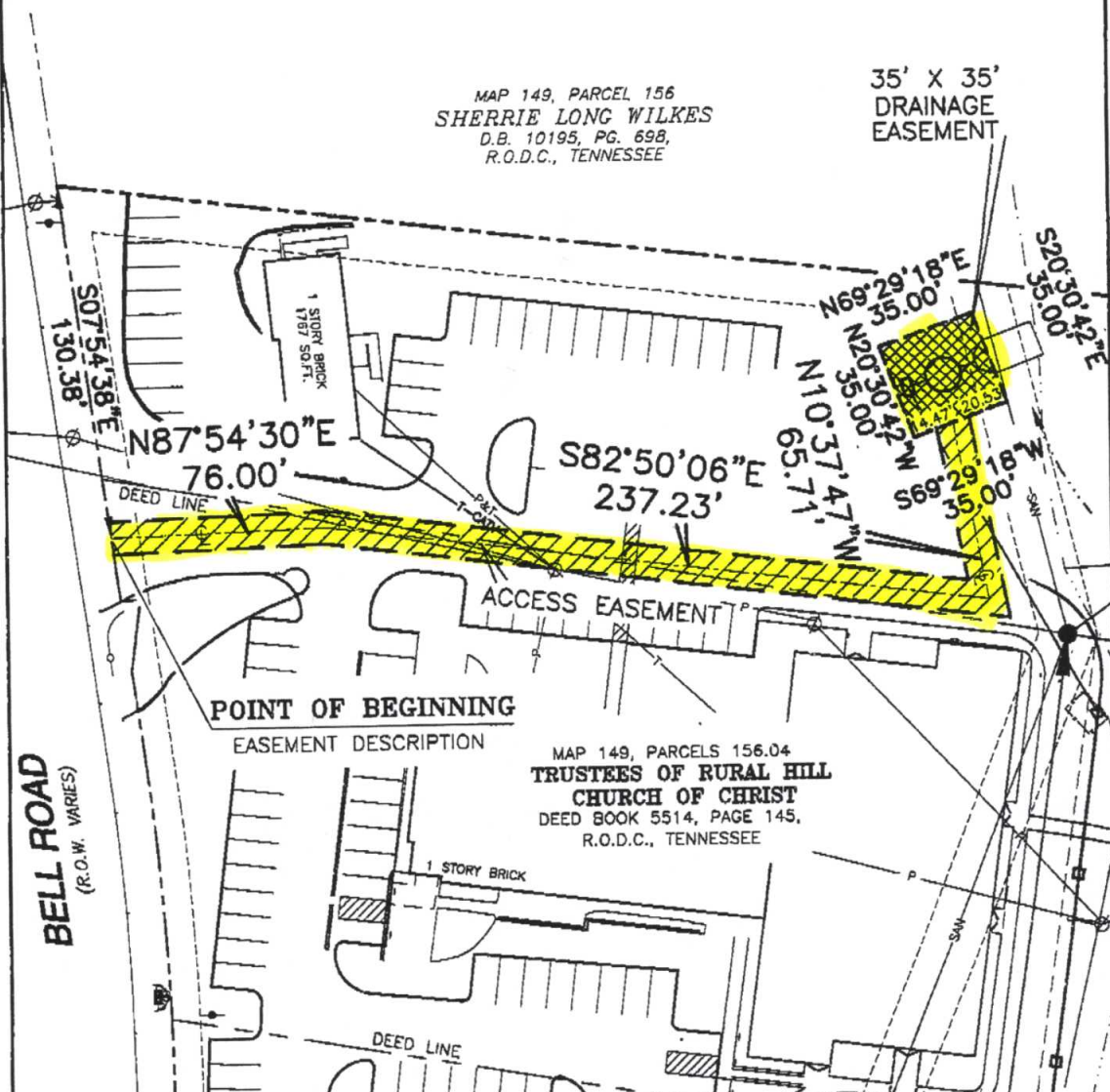
SCALE: 1"=50'

NOTE:

THIS IS NOT A GENERAL PROPERTY SURVEY AS DEFINED UNDER RULE 0820-3-07, STANDARDS OF PRACTICE.

MAP 149, PARCEL 156
SHERRIE LONG WILKES
D.B. 10195, PG. 698,
R.O.D.C., TENNESSEE

35' X 35'
DRAINAGE
EASEMENT



BELL ROAD
(R.O.W. VARIES)

POINT OF BEGINNING

EASEMENT DESCRIPTION

MAP 149, PARCELS 156.04
TRUSTEES OF RURAL HILL
CHURCH OF CHRIST
DEED BOOK 5514, PAGE 145,
R.O.D.C., TENNESSEE

AREA WITHIN EASEMENT:

ACCESS EASEMENT:

4,547 SQ. FT. OR 0.10 ACRES±

DRAINAGE EASEMENT:

1,225 SQ. FT. OR 0.03 ACRES±

EXHIBIT "A"

12-FOOT WIDE INGRESS-EGRESS EASEMENT
AND A 35-FOOT X 35-FOOT DRAINAGE EASEMENT

RAGAN SMITH

PLANNERS • CIVIL ENGINEERS
LANDSCAPE ARCHITECTS • SURVEYORS

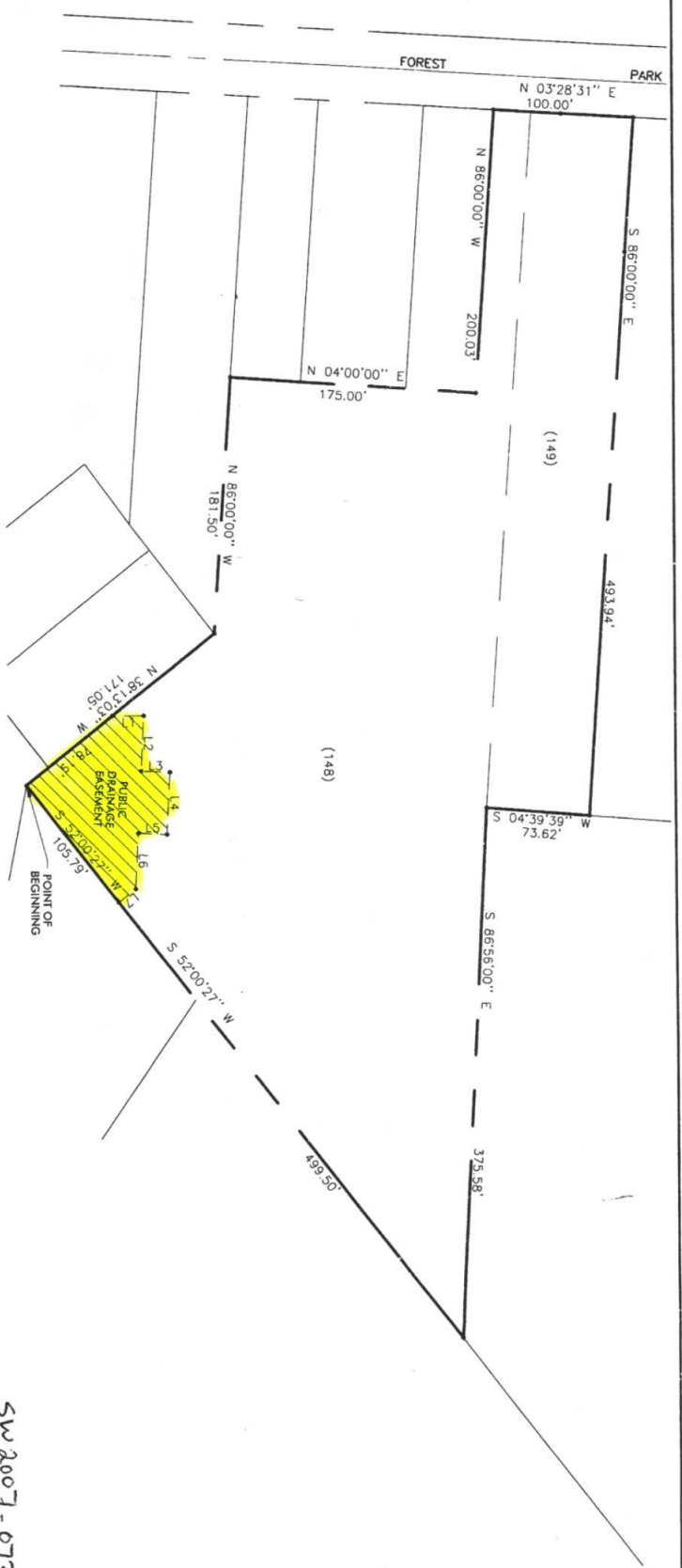
Regan-Smith-Associates, Inc.

315 WOODLAND ST. P.O. BOX 60070
NASHVILLE, TENNESSEE 37208-0070
(615) 244-8591 • FAX (615) 244-6739

TRUSTEES OF RURAL HILL
CHURCH OF CHRIST

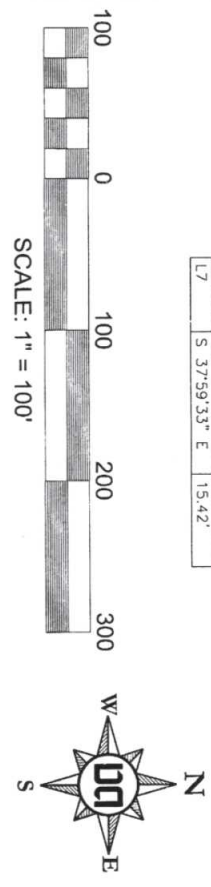
33rd COUNCILMANIC DISTRICT OF METROPOLITAN
NASHVILLE, DAVIDSON COUNTY, TENNESSEE

JOB # 2005-151 W.O. # 8075 DATE: 3-20-07 DRAWN BY: A. C. HOUSE APPROVED BY: K.L. BIRDWELL



LINE TABLE

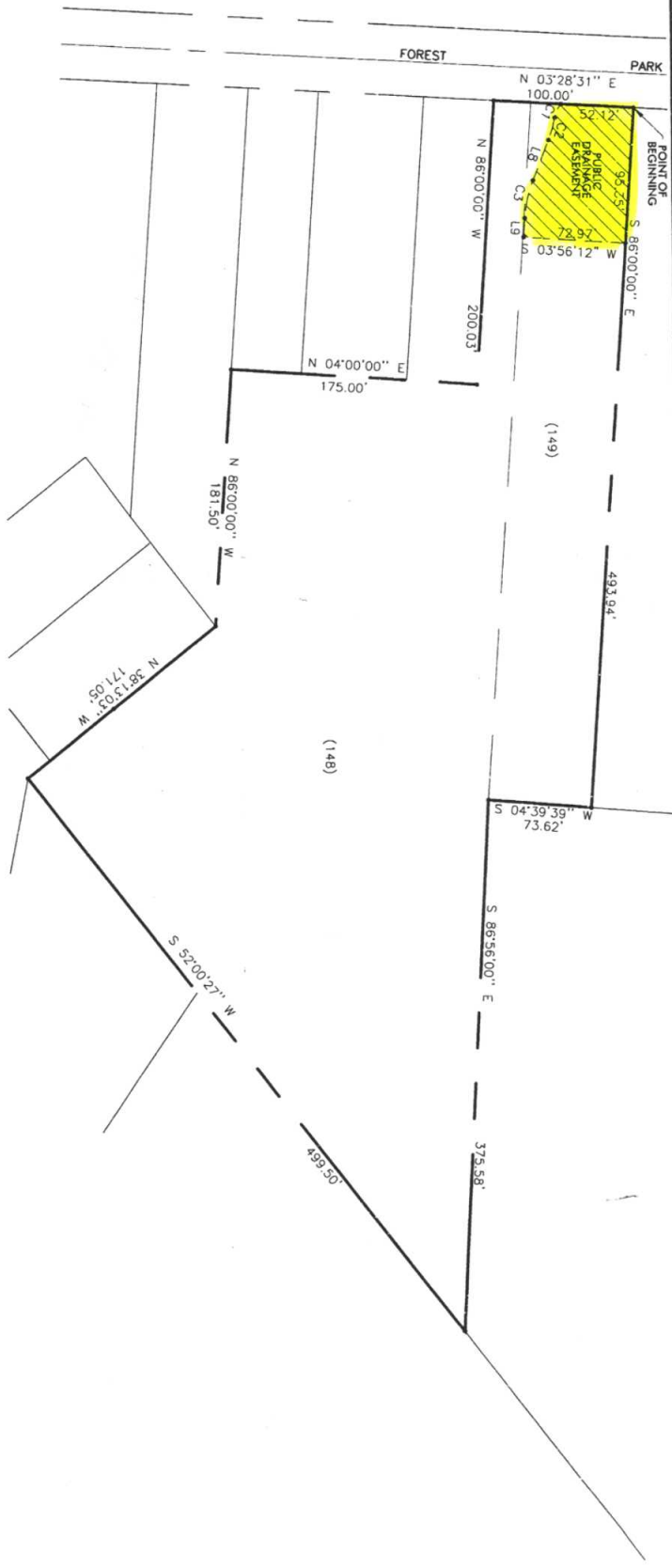
NUMBER	DIRECTION	DISTANCE
L1	NORTH	22.38'
L2	S 86°56'00" E	38.94'
L3	N 03°04'00" E	20.50'
L4	S 86°56'00" E	44.00'
L5	S 03°04'00" W	20.50'
L6	S 86°56'00" E	39.48'
L7	S 37°59'33" E	15.42'



A BLANKET ACCESS EASEMENT IS GRANTED TO ACCESS AND MAINTAIN IMPROVEMENTS IN PUBLIC UTILITY EASEMENTS.
MAP SHOWING
DEDICATION OF EASEMENT
TO THE METROPOLITAN GOVERNMENT
OF NASHVILLE AND DAVIDSON COUNTY, TENNESSEE
FROM
HERMOSA HOLDINGS, INC.

PROJECT NO. 07-DL-0038 EASEMENT NO. 1-1 STORM SEWER SYSTEM
 SCALE: 1"=100' MAP NO. 52-01 PARCEL NO. 148 Project No. 06149 BY: DALE & ASSOCIATES, INC.

Sw 2007-073

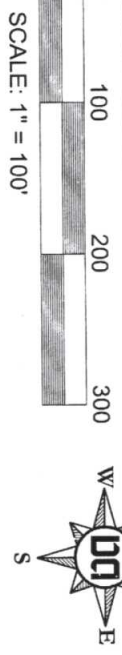


LINE TABLE

NUMBER	DIRECTION	DISTANCE
L8	N 68°09'27" W	30.53
L9	N 85°58'56" W	13.46

CURVE TABLE

NUMBER	DELTA	RADIUS	TANGENT	ARC	CHORD	BEARING	CHORD LENGTH
C1	27°16'10"	22.50	5.46	10.71	N 65°05'36" W	10.61	
C2	10°34'14"	87.50	8.09	16.14	N 73°26'34" W	16.12	
C3	17°49'29"	87.50	13.72	27.22	N 77°04'11" W	27.11	



PROJECT NO. 07-DL-0038 EASEMENT NO. 1-2 STORM SEWER SYSTEM

MAP NO. 52-01 PARCEL NO. 149 Project No. 06149 BY: DALE & ASSOCIATES, INC.

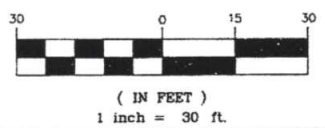
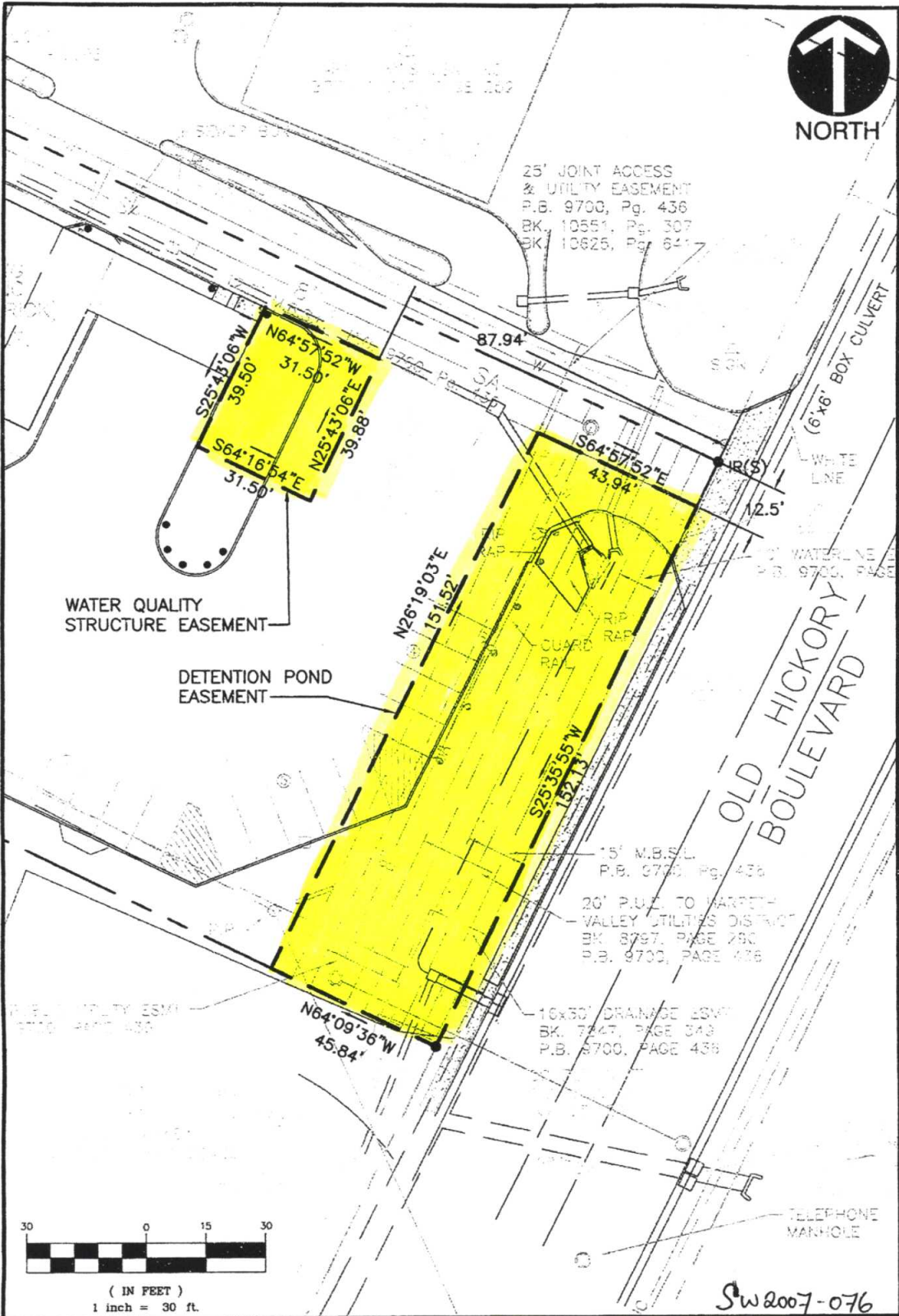
SCALE: 1"=100'

SCALE: 1" = 100'

SW 2007-073

A BLANKET ACCESS EASEMENT IS GRANTED TO ACCESS AND MAINTAIN IMPROVEMENTS IN PUBLIC UTILITY EASEMENTS.

MAP SHOWING
DEDICATION OF EASEMENT
 TO THE METROPOLITAN GOVERNMENT
 OF NASHVILLE AND DAVIDSON COUNTY, TENNESSEE
 FROM
 HERMOSA HOLDINGS, INC.



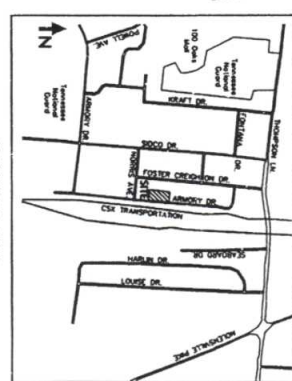
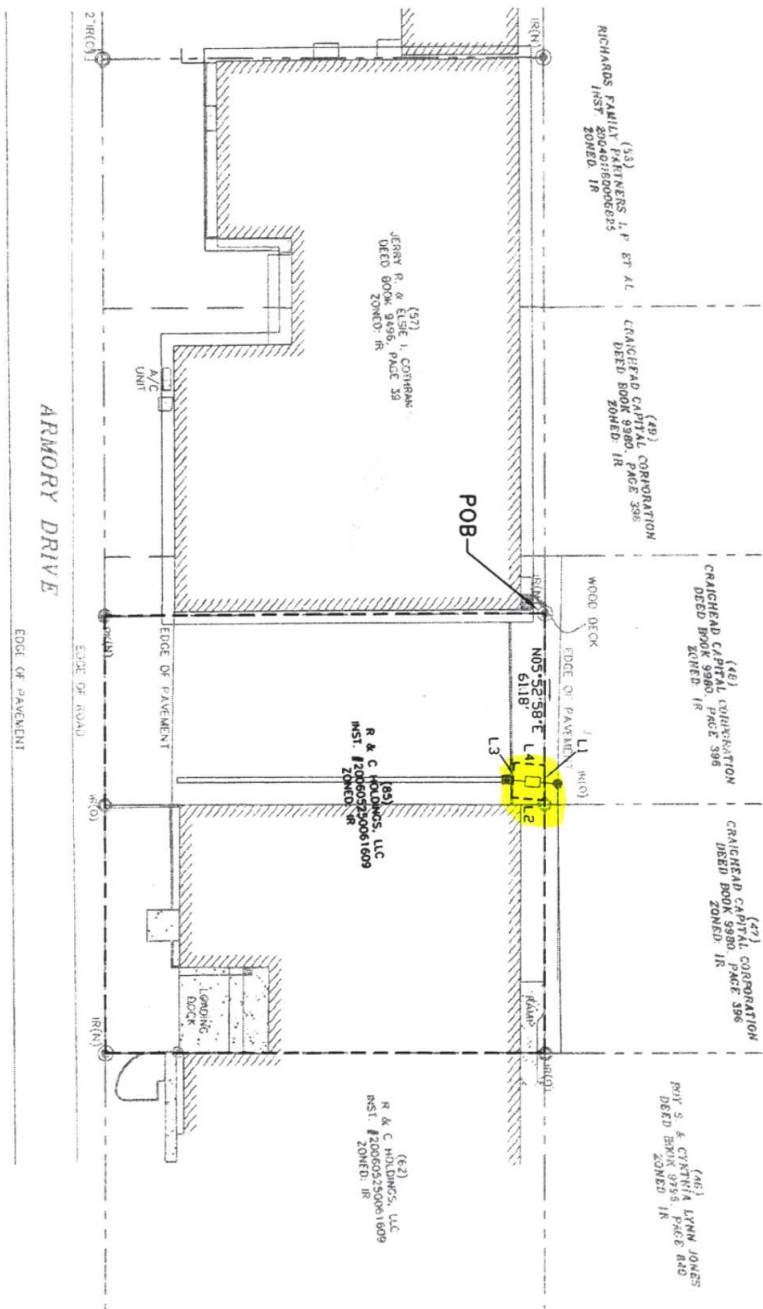
SW 2007-076

MAP SHOWING
DEDICATION OF EASEMENT
 TO THE
 METROPOLITAN GOVERNMENT OF NASHVILLE AND DAVIDSON COUNTY, TENNESSEE
 07-DL-0039
 FROM
 GOODWILL INDUSTRIES OF MIDDLE TN, INC.

EASEMENT NO.:	PROJECT NO.: 061-576	SYSTEM: DRAINAGE	SCALE: 1" = 30'
PARCEL NO.: 345, MAP 142	PREPARED BY: Civil & Environmental Consultants, inc.	DATE: 03/27/07	

LINE TABLE

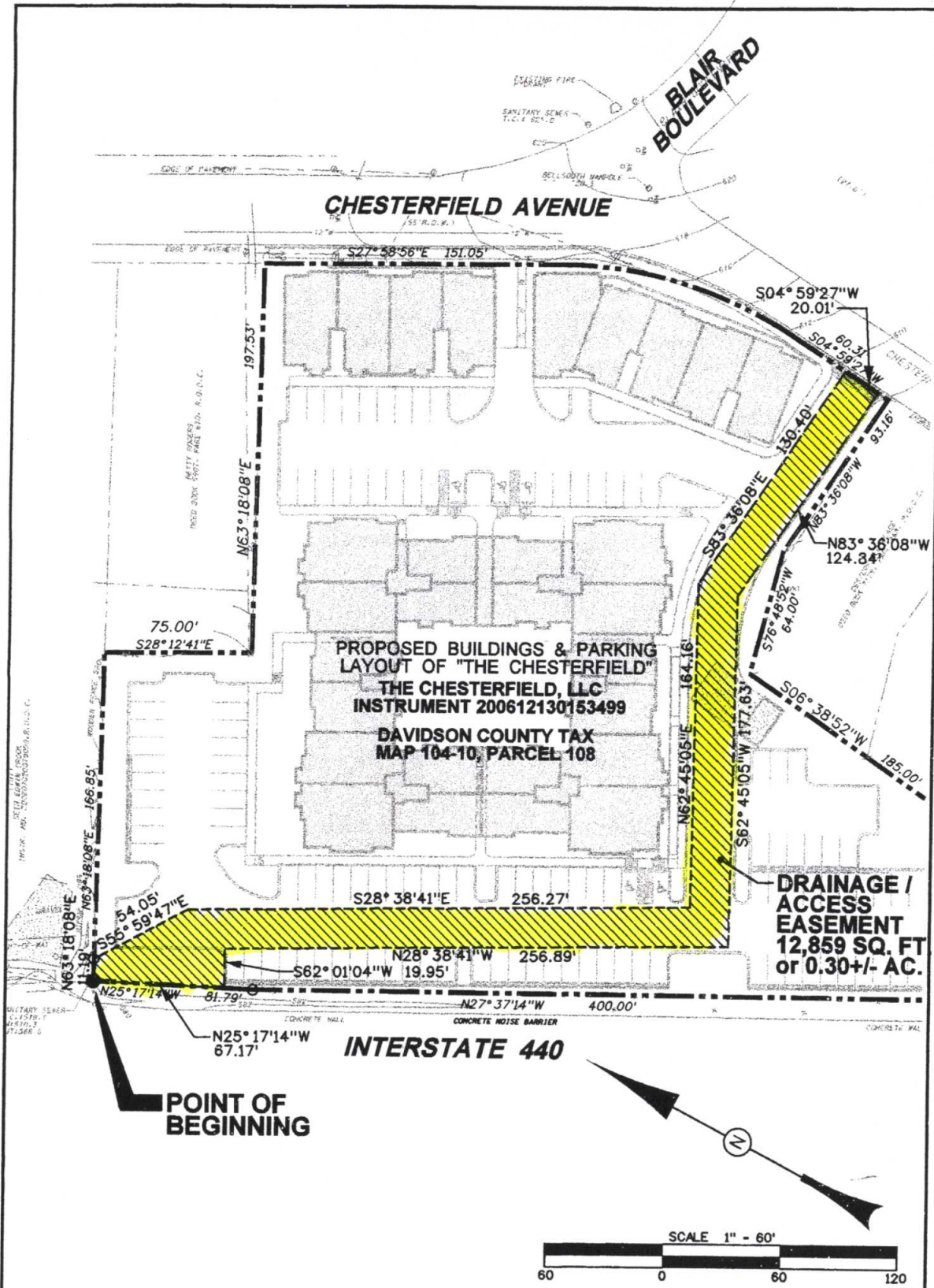
LINE	BEARING	LENGTH
L1	N05°52'58"E	14.05'
L2	S79°22'11"E	13.48'
L3	S10°37'49"W	14.00'
L4	N19°22'11"W	12.32'



SCALE: 1" = 60'

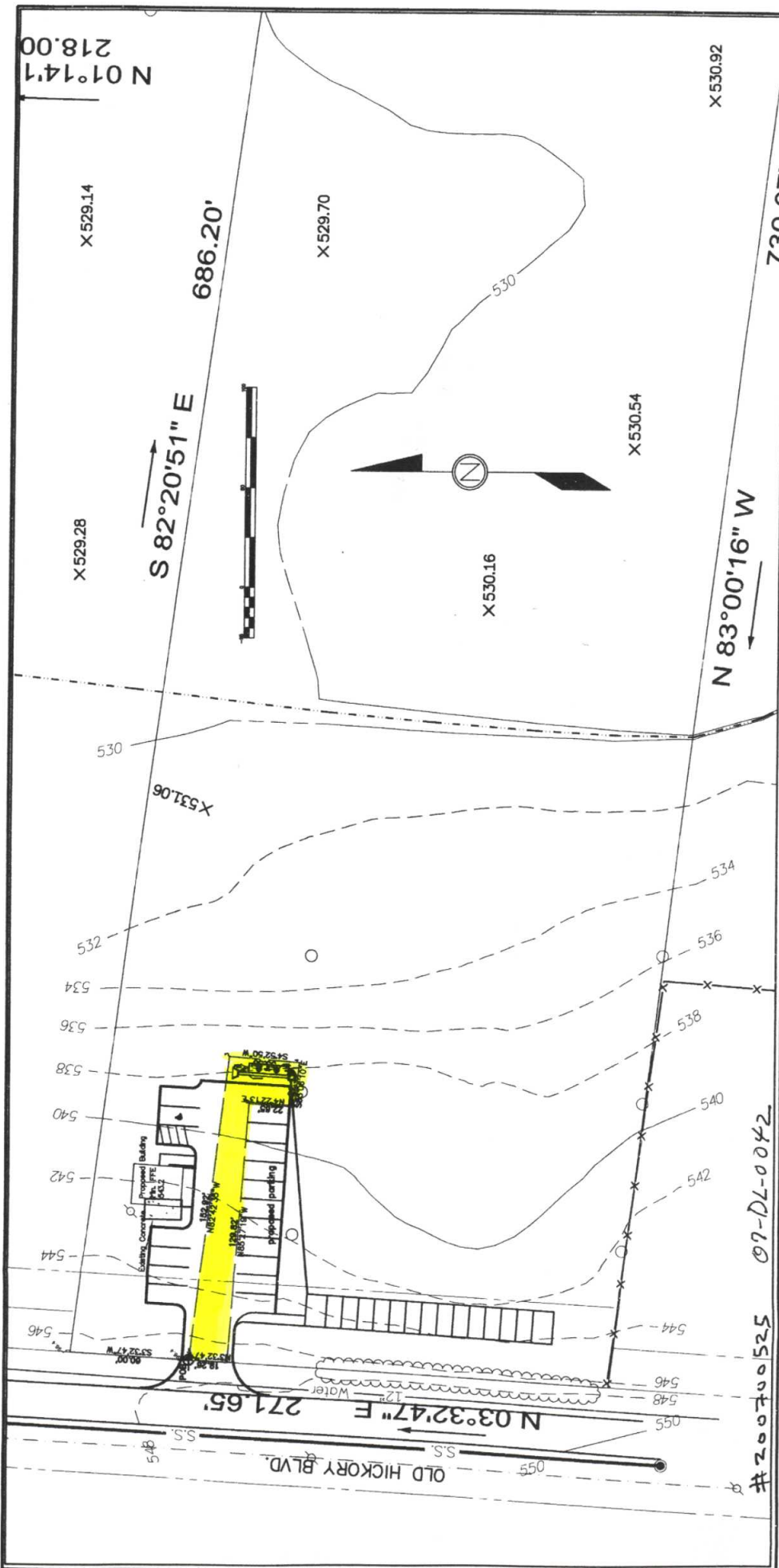
07-DL0040
#SW2007-064; Project # 9568

REC HOLDINGS, LLC 5411 BIRCHWOOD CIR BIRMINGHAM, TN 38202	RESTORE ONE ARMORY DRIVE TAX MAP 118-16 PARCELS 84 & 85 NASHVILLE, DAVIDSON COUNTY, TENNESSEE	LITTLEJOHN ENGINEERING ASSOCIATES 1511 TERRY AVE. SUITE 200 NASHVILLE, TENNESSEE 37212 (615) 259-1100	SHEET NO.
			TOTAL SHEETS
DATE: 2-20-07	PROJECT: 26146	DRAWN BY:	CHECKED BY:
P.U.D.E. EASEMENT EXHIBIT "A"	07-DL0040	SCALE: 1" = 60'	PROJECT # 9568



MAP SHOWING
 DEDICATION OF EASEMENT
 GRANTEE
 THE METROPOLITAN GOVERNMENT OF NASHVILLE
 AND DAVIDSON COUNTY, TENNESSEE
 GRANTOR
THE CHESTERFIELD, LLC

PROJECT NO. <u>02-DL-0041</u>	EASEMENT NO. <u>1-1</u>	SYSTEM
SCALE 1"=60'	MAP/PARCEL 104-10 / 108	DATE JANUARY 4, 2007
BY CIVIL SITE DESIGN GROUP, PLLC		



Tax Map 173 Parcel 84	Stormwater System
Easement: 1 of 1	date: 2/19/07
Scale 1" = 60'	by: JVA
Map showing the dedication of easement to the Metropolitan Government of Nashville and Davidson County, TN. from E. M. Baker	

#200700525 07-DL-0042

N 01°14'1
218.00

X 529.14

S 82°20'51" E

686.20'

X 529.70

X 530.16

X 530.54

X 530.92

N 83°00'16" W

730.07'

X 529.28

X 531.06

532

534

536

538

540

542

544

546

548

550

552

554

556

558

560

562

564

566

568

570

530

532

534

536

538

540

542

544

546

548

550

552

554

556

558

560

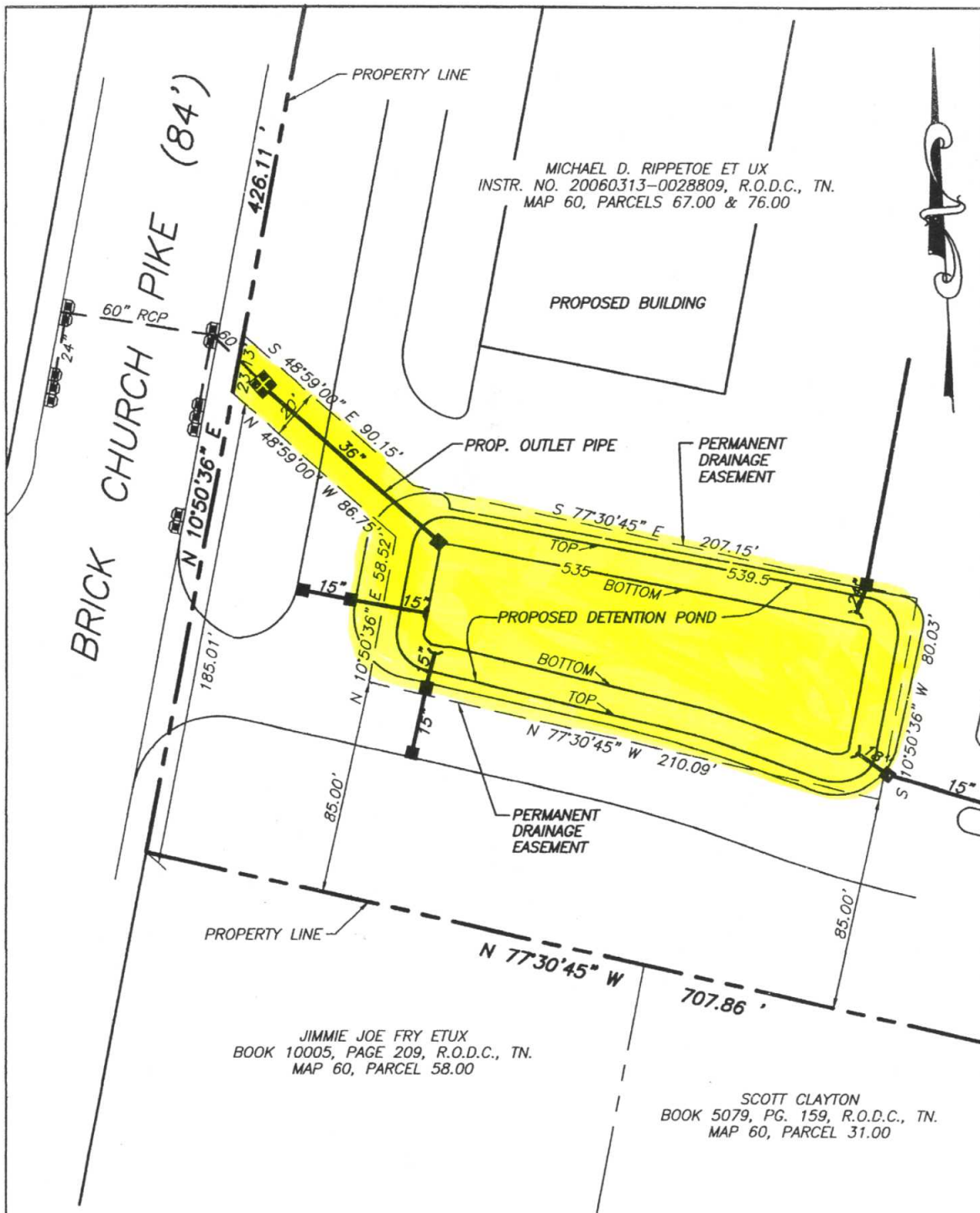
562

564

566

568

570



DEDICATION OF DRAINAGE EASEMENT
FROM
MICHAEL D. RIPPETOE ET UX
OF RECORD IN INSTRUMENT NO. 20060313-0028809, R.O.D.C., TN
DATE : JANUARY 5, 2007

SCALE : 1" = 50'

PREPARED BY :

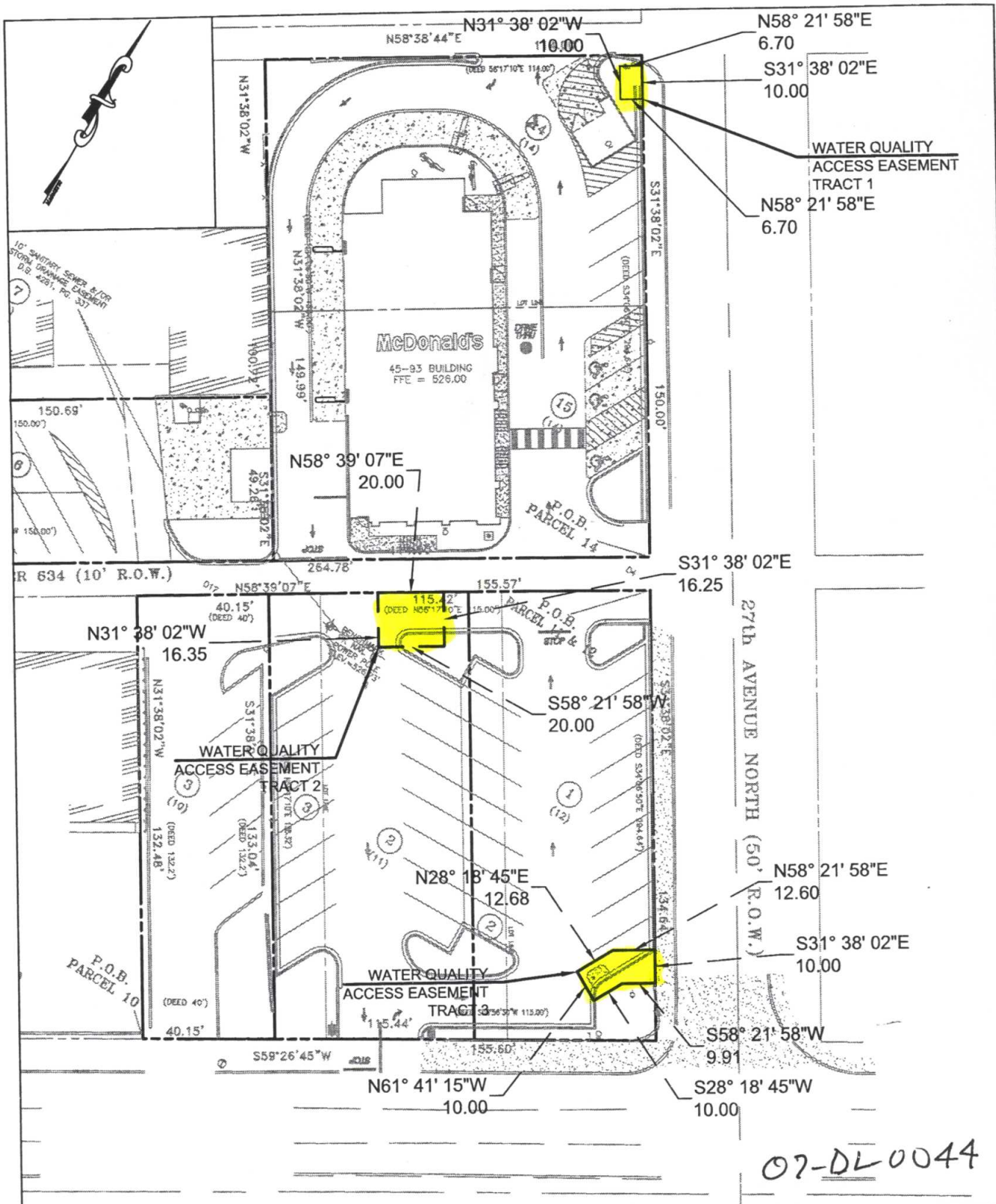


LAND DEVELOPMENT CONSULTANTS
116 MAPLE ROW BLVD.
HENDERSONVILLE, TN. 37075
PHONE 615-822-0012
FAX 615-824-1487

07-DL0043

#200700501

JOB NO. 060078



BA Engineering

ENGINEERING

2601 WESTWOOD DRIVE NASHVILLE, TENNESSEE 37204
 PHONE: (615) 834-8383 FAX: (615) 834-9296 email: BA.Eng@SoftTek.net

Water Quality Easement Exhibit

West End Ave. and 27 North Ave.

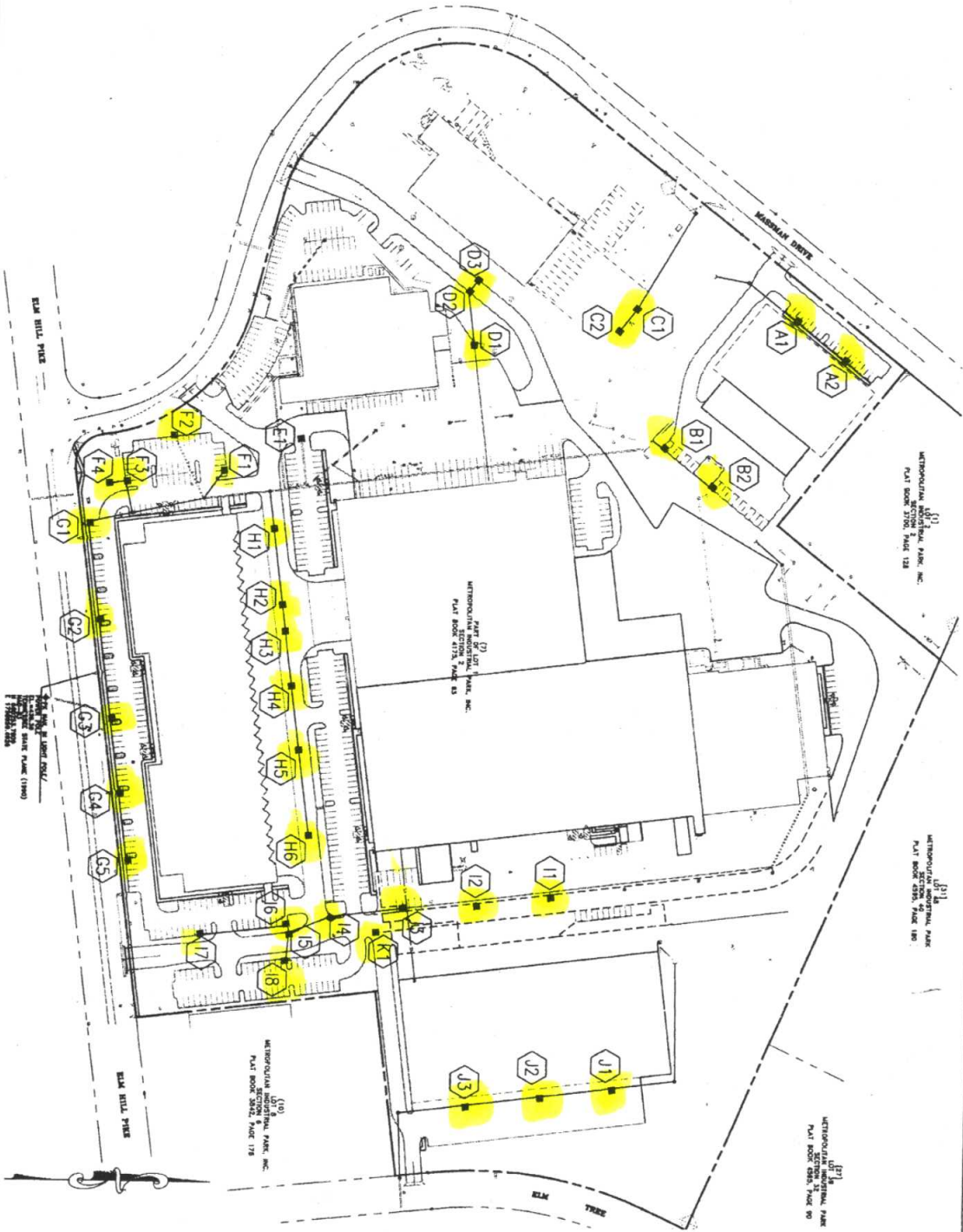
Nashville

Tennessee

DATE	SHEET NO.
03-28-07	5 OF 5
1"=40'	

200700608

WATER QUALITY STRUCTURES		
CODE	NORTHING	EASTING
A1	661375.2726	1758375.2756
A2	661453.7266	1758426.4632
B1	661183.3666	1758563.7131
B2	661240.9861	1758645.0975
C1	661116.3868	1758359.0117
C2	661087.6899	1758394.9631
D1	660954.1167	1758419.4059
D2	660943.7384	1758335.4584
D3	660829.2571	1758315.2932
E1	660453.0399	1758628.2413
F1	660373.4809	1758572.8724
F2	660373.4809	1758572.8724
F3	660296.8208	1758646.0027
F4	660270.8092	1758651.2889
G1	660237.2430	1758671.5457
G2	660257.0425	1758687.1547
G3	660277.1519	1759032.1694
G4	660297.3327	1759153.4656
G5	660300.4301	1759258.1324
H1	660336.0083	1758720.5974
H2	660351.3887	1758843.0504
H3	660356.7066	1758885.6044
H4	660367.9438	1758975.1873
H5	660380.8793	1759075.3090
H6	660398.2021	1759218.4058
I1	660391.0419	1759310.7016
I2	660372.0876	1759325.5786
I3	660351.4387	1759330.6862
I4	660336.6367	1759345.4206
I5	660369.1899	1759373.1993
I6	660367.7189	1759361.3334
I7	660427.2184	1759378.9501
I8	660365.4631	1759416.0130
J1	661094.3733	1759618.8016
J2	660978.2614	1759633.1895
J3	660958.6799	1759648.0057
K1	660709.0499	1759371.5458



SCALE: 1" = 200'

EASEMENT 1-2 07-DL0045

P.U.D.E
EASEMENT
EXHIBIT "A"

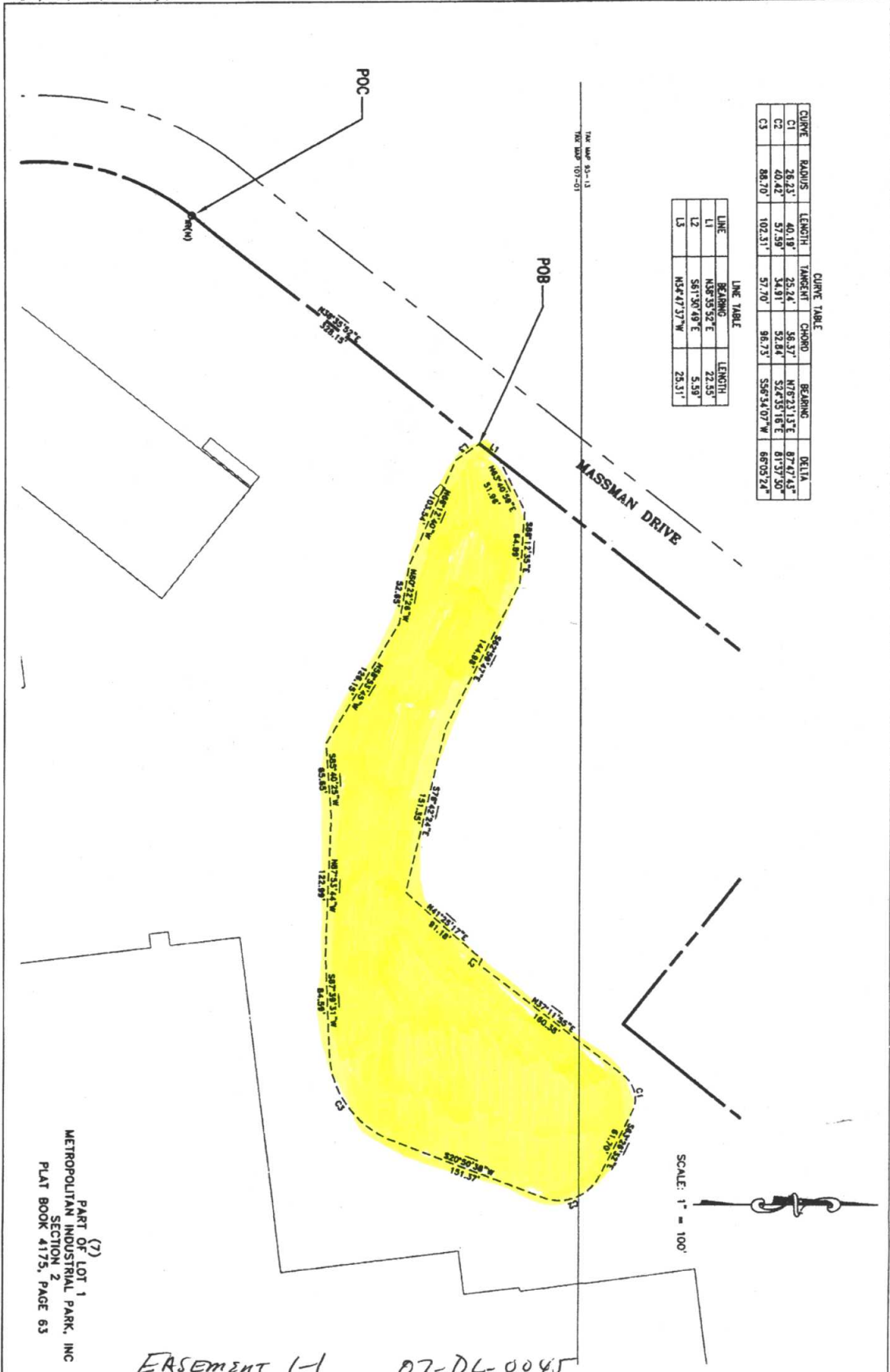
NO.	REVISION	DATE
1		2/2/07
2		2/2/07

HANNING
DEVELOPMENT CO.
441 GARDNER ST.
NASHVILLE, TN 37203
615-252-3971

METRO COMMERCIAL PARK
1700 ELM HILL PIKE
NASHVILLE, DAVIDSON COUNTY, TENNESSEE

LITTLEJOHN
ENGINEERING
ASSOCIATES
ENGINEERING, PLANNING
CONSULTING ARCHITECTURE
AND INTERIOR DESIGN
190 BENTLEY DRIVE
NASHVILLE, TENNESSEE 37212
615-252-3971 FAX 615-252-3948





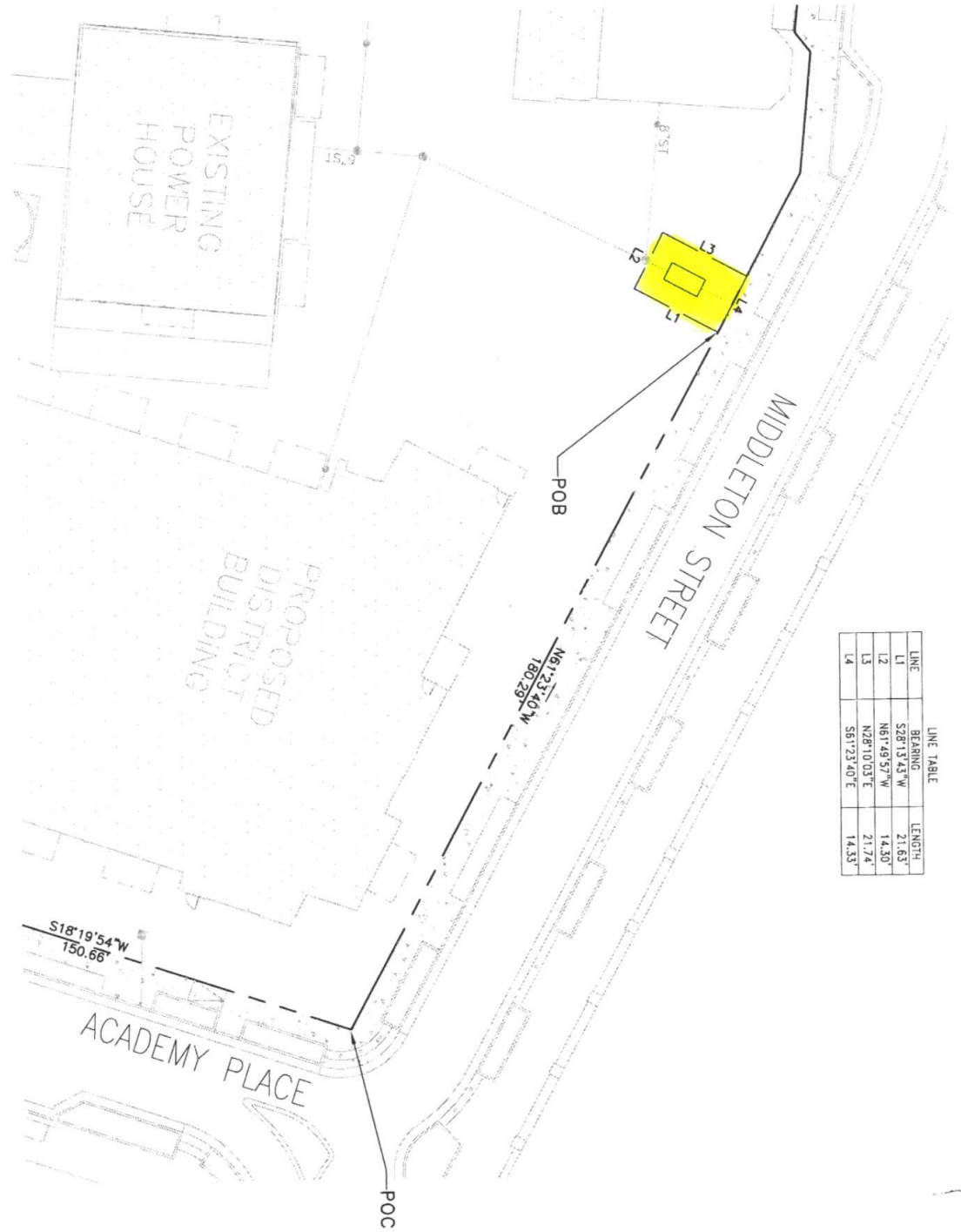
CURVE TABLE

CURVE	RADIUS	LENGTH	TANGENT	CHORD	BEARING	DELTA
C1	26.23'	40.18'	25.24'	36.37'	N75°23.13'E	87°47.45'
C2	40.42'	57.59'	34.91'	52.84'	S27°35.16'E	81°37.50'
C3	88.70'	102.31'	57.70'	98.73'	S56°54.07'W	66°05.24'

LINE TABLE

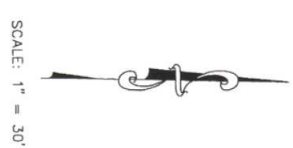
LINE	BEARING	LENGTH
L1	N48°49.52'E	22.45'
L2	S81°30.48'E	5.58'
L3	N54°47.57'W	25.31'

P.U.D.E. EASEMENT EXHIBIT "A"	2-28-07 23132	HAWKINS DEVELOPMENT CO. 101 NORTH HERRING AVENUE SOUTH NASHVILLE, TN 37203	METRO COMMERCE PARK 1700 ELM HILL PIKE NASHVILLE, DAVIDSON COUNTY, TENNESSEE	ASSOCIATES LITTLEJOHN ENGINEERING
	(7) METROPOLITAN INDUSTRIAL PARK, INC SECTION 2 PLAT BOOK 4175, PAGE 63	ERSEMENT 1-1 07-DL-0045	SCALE: 1" = 100'	NORTH ARROW



LINE TABLE

LINE	BEARING	LENGTH
L1	S28°13'43" W	21.63'
L2	N61°49'57" W	14.30'
L3	N28°10'03" E	21.74'
L4	S61°23'40" E	14.33'



SW2007067 07-DL-00

DATE	REVISION
11-10-07	2023

METROPOLITAN HOUSING AND DEVELOPMENT AGENCY
701 SOUTH SIXTH STREET
NASHVILLE, TN 37206

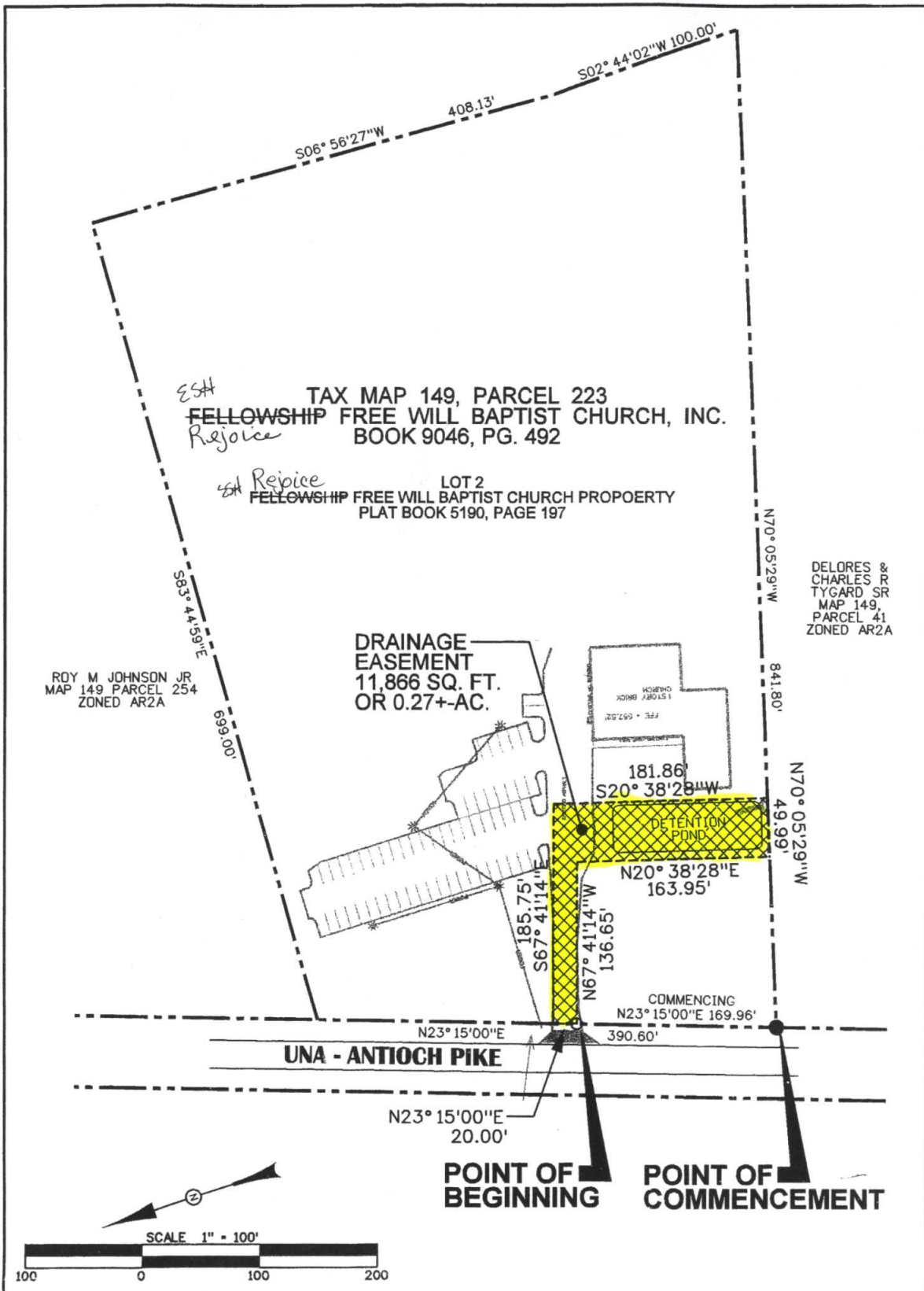
ROLLING MILL HILL
NASHVILLE, DAVIDSON COUNTY, TN

LITTLEJOHN ENGINEERING ASSOCIATES

ENGINEERING, PLANNING, ARCHITECTURE, INTERIOR DESIGN, ENVIRONMENTAL SCIENCE, LANDSCAPE ARCHITECTURE, SURVEYING, PHOTOGRAMMETRY, REMEDIATION, AND TRAFFIC ENGINEERING

1001 NORTH HENDERSON ROAD, SUITE 200
NASHVILLE, TN 37203
PHONE: (615) 381-4477 FAX: (615) 381-4808

P.U.D.E. EASEMENT EXHIBIT "A"

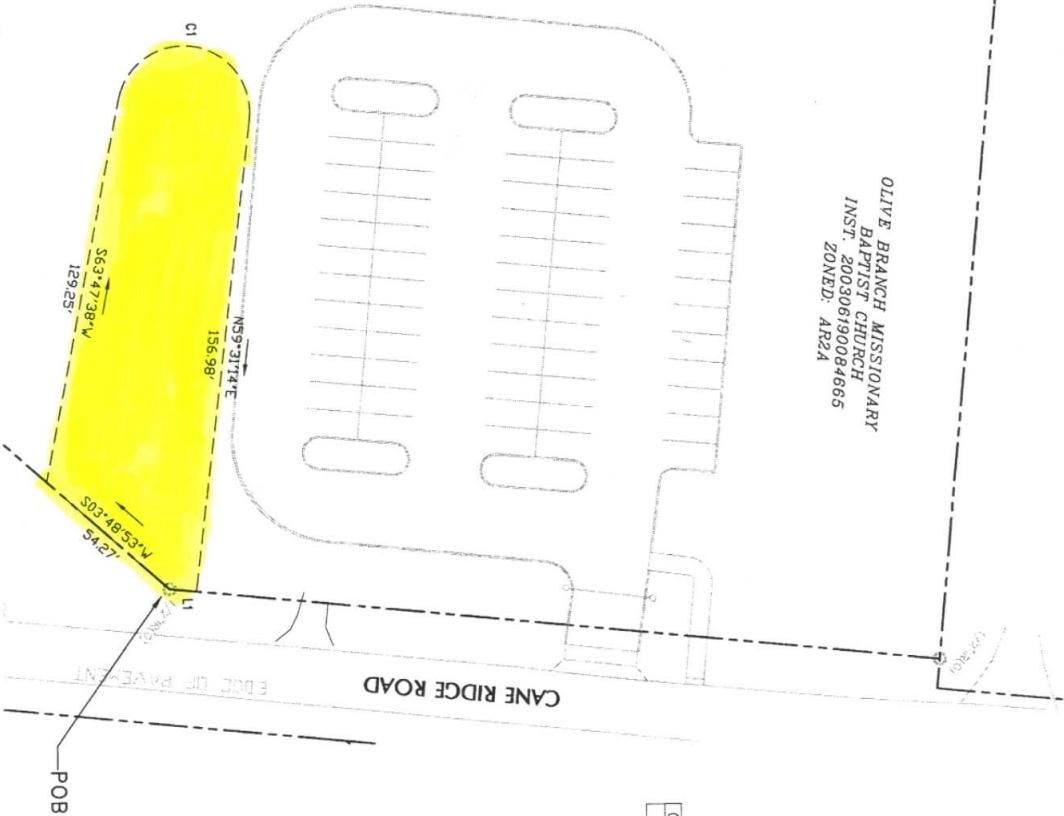


200700582

MAP SHOWING
DEDICATION OF EASEMENT
 GRANTEE
 THE METROPOLITAN GOVERNMENT OF NASHVILLE
 AND DAVIDSON COUNTY, TENNESSEE
 GRANTOR
Est **REJOICE**
FELLOWSHIP FREE WILL BAPTIST CHURCH, INC.

PROJECT NO. <u>07DL0047</u>	EASEMENT NO. <u>1-1</u>	SYSTEM
SCALE 1"=100'	MAP/PARCEL 149 / 223	DATE MARCH 06, 2007
		BY CIVIL SITE DESIGN GROUP, PLLC

#200700468



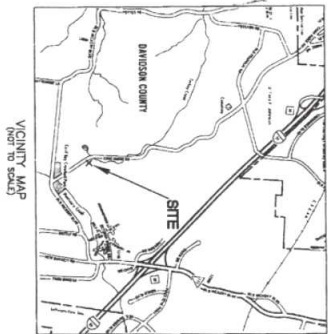
OLIVE BRANCH MISSIONARY
BAPTIST CHURCH
INST. 200306190084665
ZONED: AR2A

CURVE TABLE

CURVE	RADIUS	LENGTH	TANGENT	CHORD	BEARING	DELTA
C1	22.17'	67.35'	426.20'	44.28'	N27°30'05"W	174°02'38"

LINE TABLE

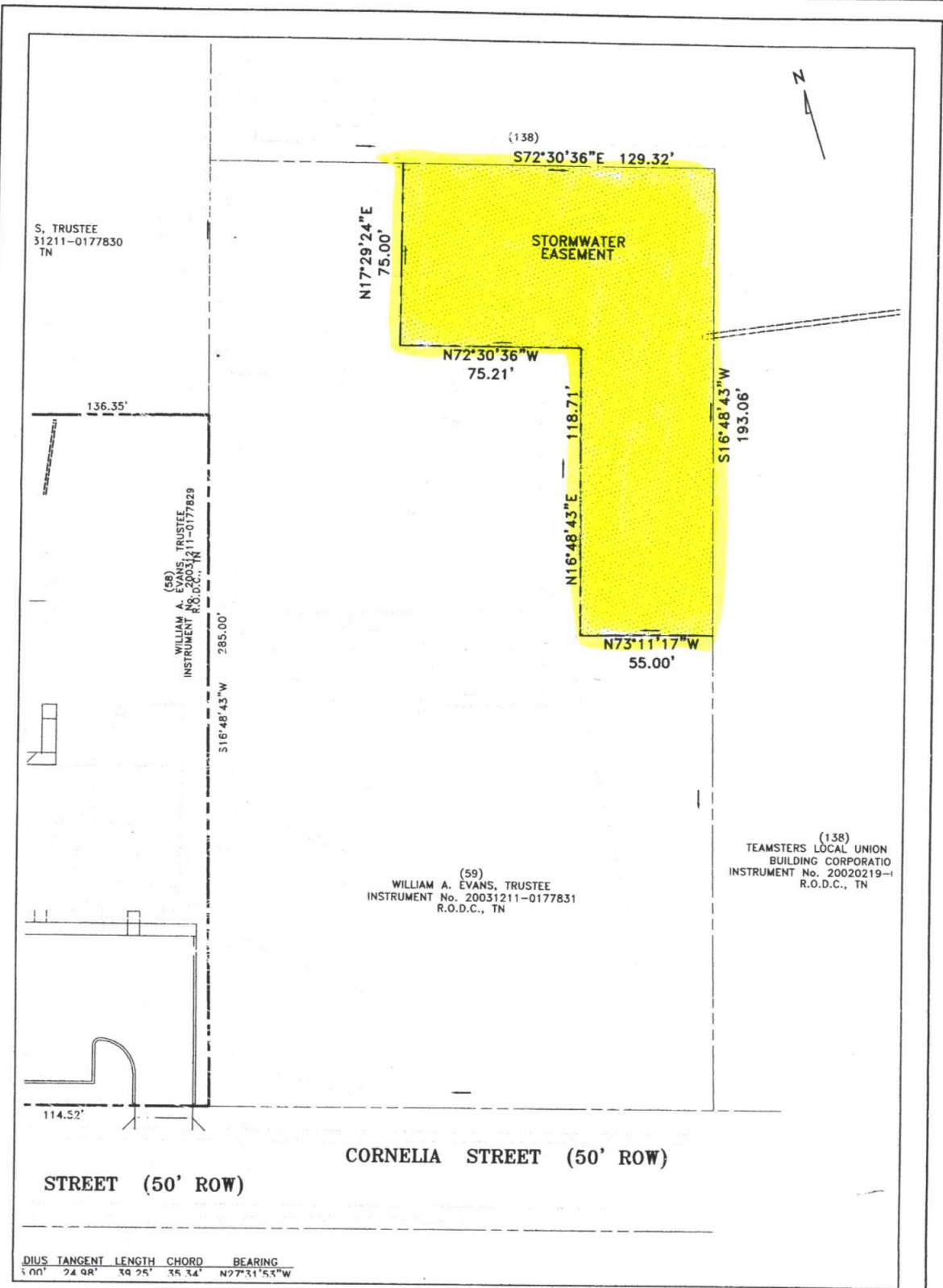
LINE	BEARING	LENGTH
L1	S31°31'18"E	9.02'



SCALE: 1" = 50'

Sw 2007-0468 07-DL-0048

P.U.D.E. EASEMENT EXHIBIT "A"	DATE: 4-9-07 REVISION: 28109	OLIVE BRANCH BAPTIST CHURCH 1911 TRENCH/1851 AMBLE SQ/SH NASHVILLE, TN 37213	OLIVE BRANCH BAPTIST CHURCH NASHVILLE, DAVIDSON COUNTY, TENNESSEE	LITTLEJOHN ENGINEERING ASSOCIATES ENGINEERING, PLANNING AND SURVEYING 1911 TRENCH/1851 AMBLE SQ/SH NASHVILLE, TENNESSEE 37213 PHONE: (615) 441-1000 FAX: (615) 441-1001
-------------------------------------	---------------------------------	---	---	---



DIUS	TANGENT	LENGTH	CHORD	BEARING
5.00'	24.98'	39.25'	35.34'	N27°31'53\"/>

MAP SHOWING
DEDICATION OF EASEMENT
 TO THE METROPOLITAN GOVERNMENT
 OF NASHVILLE AND DAVIDSON COUNTY,
 TENNESSEE FROM
William A. Evans, Trustee

07-DL-0049
 SW2007-0476

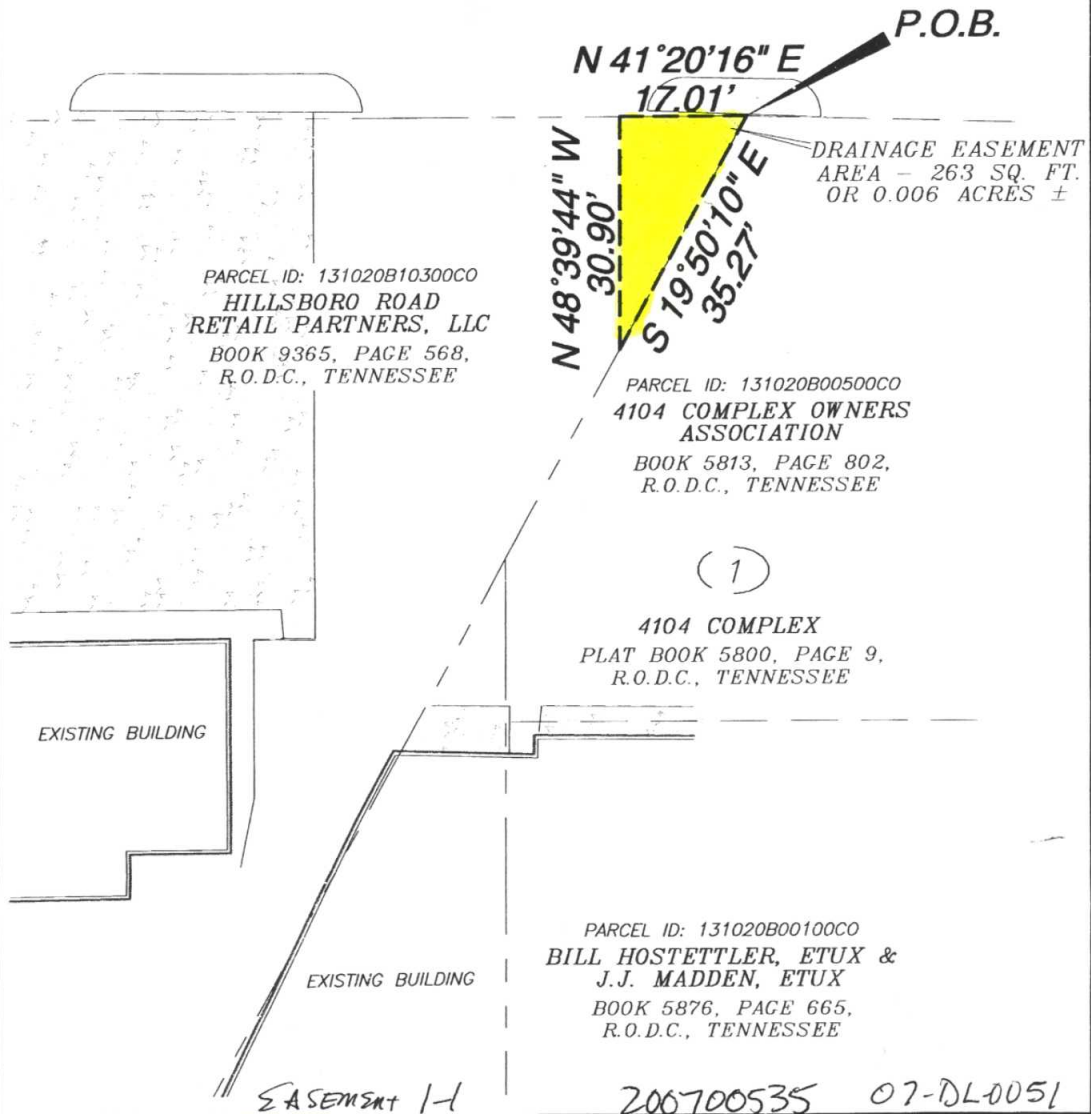
PROJECT NO. 03225	EASEMENT NO. 1	SYSTEM Metro Water Services
SCALE 1" = 50'	PARCEL NO. Map 106/Parcel 59	DATE: 03-22-2007 BY: LEC

EXHIBIT "A"



SCALE: 1"=20'

HILLSBORO PIKE



RAGAN · SMITH

PLANNERS · CIVIL ENGINEERS
LANDSCAPE ARCHITECTS · SURVEYORS

Ragan-Smith-Associates, Inc.
315 Woodland St. P.O. Box 80070 Nashville, TN 37208
(615) 244-8591 fax (615) 244-8739 www.ragan-smith.com

4106 HILLSBORO PIKE
STORM DRAINAGE EASEMENT

25TH CIVIL DISTRICT OF METROPOLITAN NASHVILLE
DAVIDSON COUNTY, TENNESSEE

DRAWN BY: A. REED

DATE: 3/28/07

APPROVED BY: DAJ

JOB NO.: 04-161

W.O. 8316

G:\2004-161\8316\EXHIBIT\EASEMENT EXHIBIT.DWG