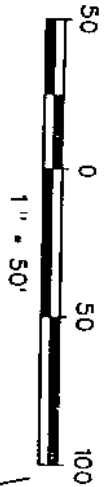
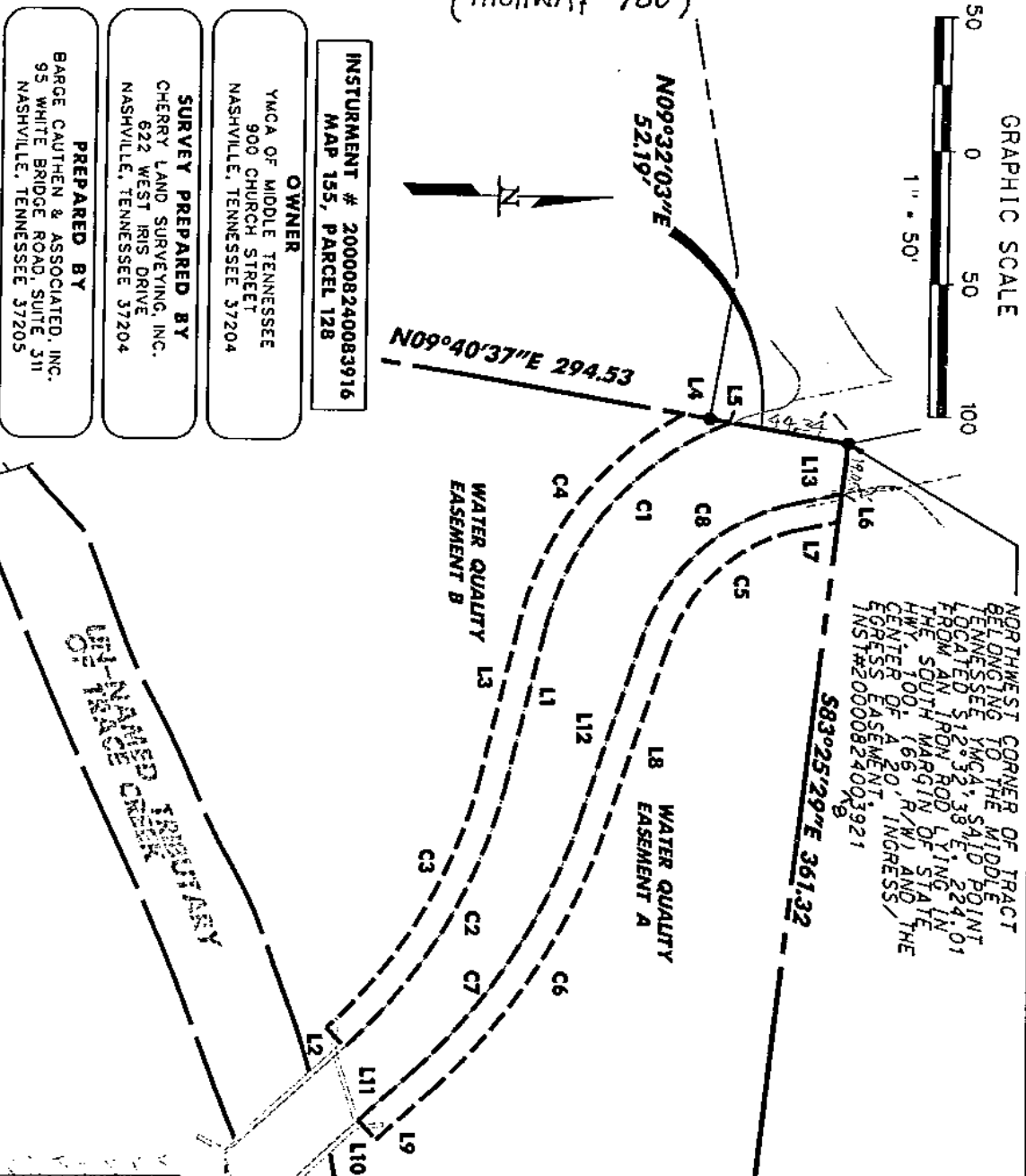


GRAPHIC SCALE



(HIGHWAY 100)



PREPARED BY
 BARGE CAUTHEN & ASSOCIATES, INC.
 95 WHITE BRIDGE ROAD, SUITE 311
 NASHVILLE, TENNESSEE 37205

SURVEY PREPARED BY
 CHERRY LAND SURVEYING, INC.
 622 WEST IRIS DRIVE
 NASHVILLE, TENNESSEE 37204

OWNER
 YMCA OF MIDDLE TENNESSEE
 900 CHURCH STREET
 NASHVILLE, TENNESSEE 37204

INSTURMENT # 200008240083916
MAP 155, PARCEL 128

CURVE RADIUS LENGTH BEARING DISTANCE

Curve	Radius	Length	Bearing	Distance
C1	112.00'	107.73'	S48°56'47"E	103.62'
C2	200.00'	119.39'	S59°23'54"E	117.62'
C3	190.00'	113.42'	N59°23'54"W	111.74'
C4	122.00'	102.21'	N52°29'49"W	99.23'
C5	66.00'	48.24'	S42°09'38"E	65.24'
C6	234.00'	120.45'	S57°02'34"E	119.12'
C7	224.00'	115.30'	N57°02'34"W	114.03'
C8	76.00'	78.58'	N42°09'58"W	75.13'

LINE BEARING DISTANCE

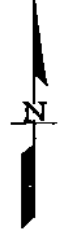
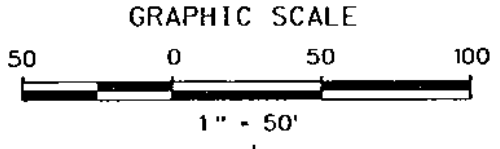
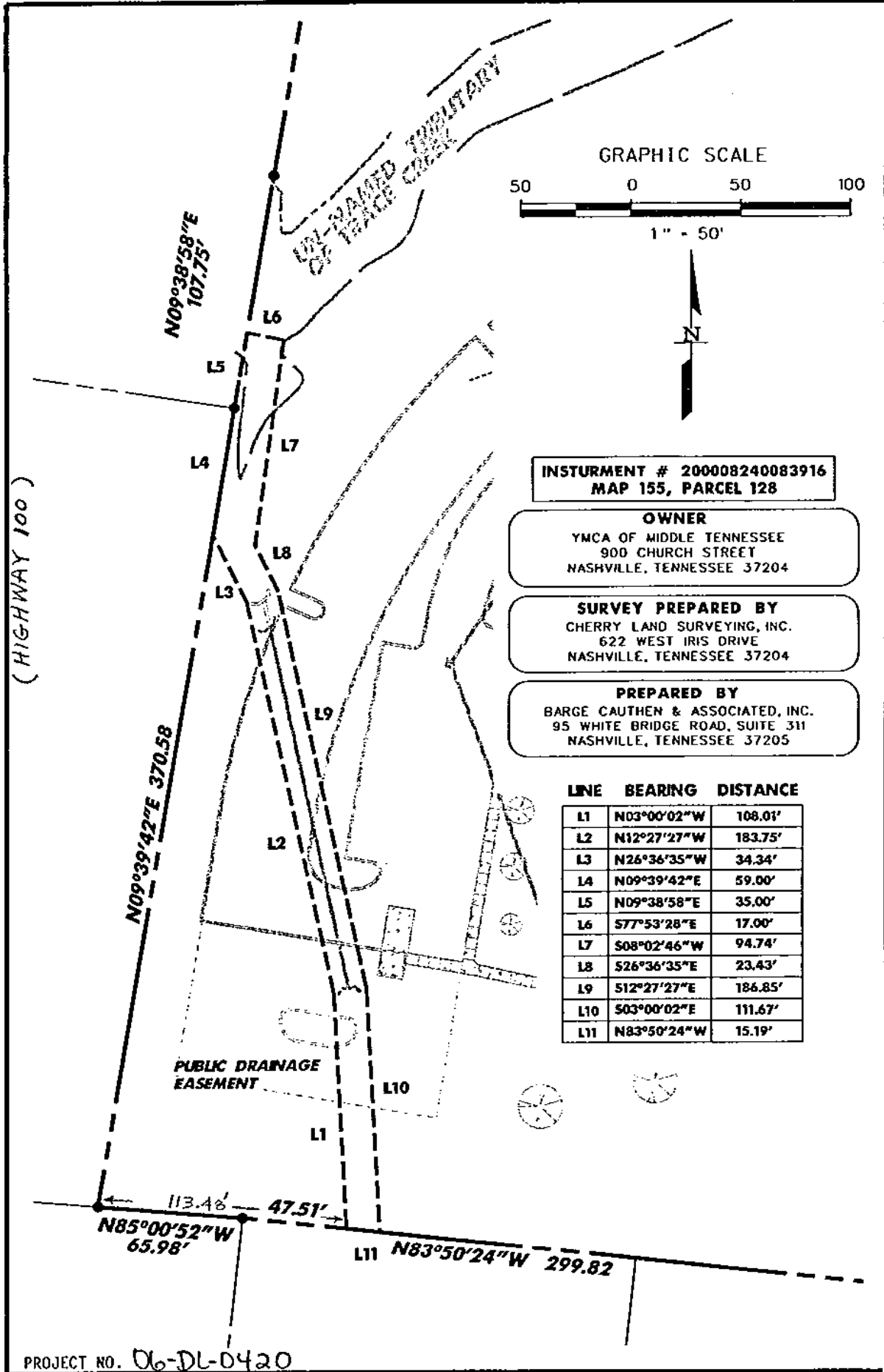
Line	Bearing	Distance
L1	S76°29'57"E	60.00'
L2	S47°42'07"W	10.00'
L3	N76°29'57"W	60.00'
L4	N09°40'37"E	9.76'
L5	N09°32'03"E	7.84'
L6	S83°25'29"E	10.58'
L7	S12°32'38"W	14.57'
L8	S71°47'17"E	72.66'
L9	S42°17'50"E	26.67'
L10	S47°42'10"W	10.00'
L11	N42°17'50"W	26.67'
L12	N71°47'17"W	72.66'
L13	N12°32'38"W	18.04'

PROJECT NO. 06-DL-0420

BARGE CAUTHEN & ASSOCIATES, INC.
 ENGINEERS • PLANNERS • ARCHITECTS
 LANDSCAPE ARCHITECTS
 95 WHITE BRIDGE ROAD SUITE 311
 NASHVILLE, TENNESSEE 37205-1427
 (615) 356-9911 (PHONE) (615) 352-6737 (FAX)
 BCA JOB NO. 2050-27

EXHIBIT "A"
BELLVUE YMCA & SENIOR
CITIZENS, INC. FACILITY
 8101 STATE HIGHWAY 100
 NASHVILLE, DAVIDSON COUNTY, TENNESSEE

EASEMENT
 NO. 1-1



INSTURMENT # 200008240083916
MAP 155, PARCEL 128

OWNER
 YMCA OF MIDDLE TENNESSEE
 900 CHURCH STREET
 NASHVILLE, TENNESSEE 37204

SURVEY PREPARED BY
 CHERRY LAND SURVEYING, INC.
 622 WEST IRIS DRIVE
 NASHVILLE, TENNESSEE 37204

PREPARED BY
 BARGE CAUTHEN & ASSOCIATED, INC.
 95 WHITE BRIDGE ROAD, SUITE 311
 NASHVILLE, TENNESSEE 37205

LINE BEARING DISTANCE

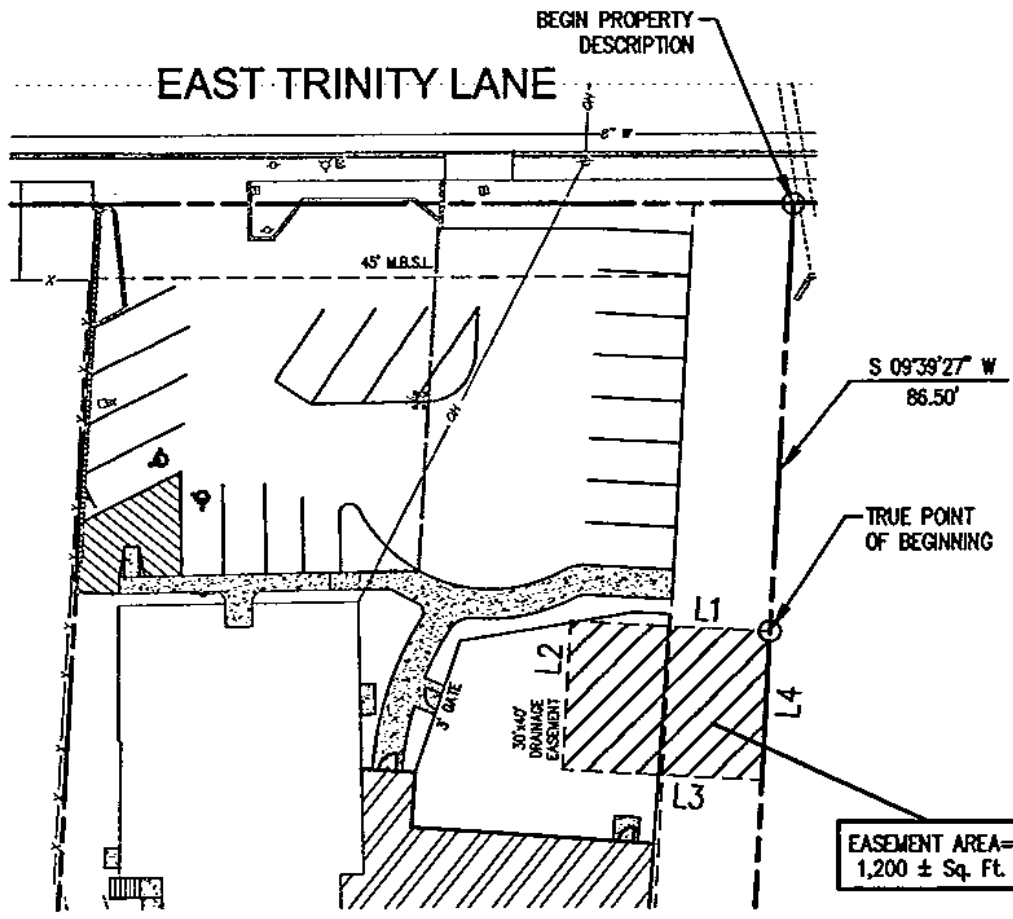
LINE	BEARING	DISTANCE
L1	N03°00'02"W	108.01'
L2	N12°27'27"W	183.75'
L3	N26°36'35"W	34.34'
L4	N09°39'42"E	59.00'
L5	N09°38'58"E	35.00'
L6	S77°53'28"E	17.00'
L7	S08°02'46"W	94.74'
L8	S26°36'35"E	23.43'
L9	S12°27'27"E	186.85'
L10	S03°00'02"E	111.67'
L11	N83°50'24"W	15.19'

PROJECT NO. 06-DL-0420

BARGE CAUTHEN & ASSOCIATES, INC.
 ENGINEERS • PLANNERS • ARCHITECTS
 LANDSCAPE ARCHITECTS
 95 WHITE BRIDGE ROAD SUITE 311
 NASHVILLE, TENNESSEE 37205-3427
 (615) 356-9911 (PHONE) (615) 352-6737 (FAX)

EXHIBIT "A"
BELLEVUE YMCA & SENIOR
CITIZENS, INC. FACILITY
 8101 STATE HIGHWAY 100
 NASHVILLE, DAVIDSON COUNTY, TENNESSEE

EASEMENT
 NO. 1-2

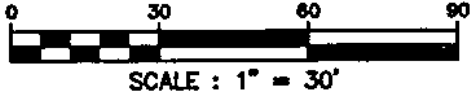


LINE TABLE

L #	BEARING	LENGTH
L1	N 80°20'33" W	40.00'
L2	S 09°39'27" W	30.00'
L3	S 80°20'33" E	40.00'
L4	N 09°39'27" E	30.00'

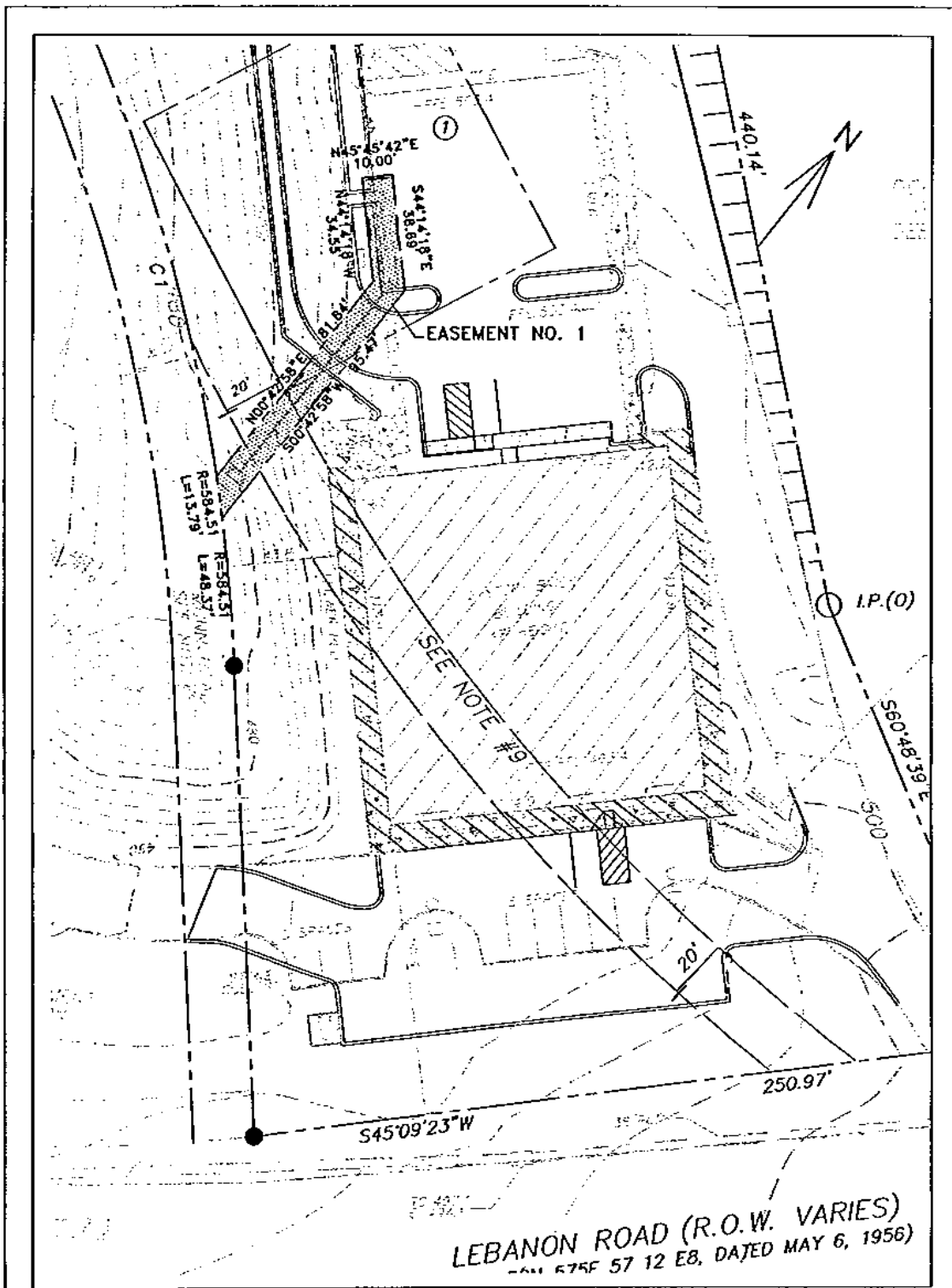


EXHIBIT "A"



MAP SHOWING
 DEDICATION OF DRAINAGE EASEMENT
 TO THE METROPOLITAN DEPARTMENT OF WATER AND SEWERAGE SERVICES
 FROM CHILD CARE ALLIANCE, INC.

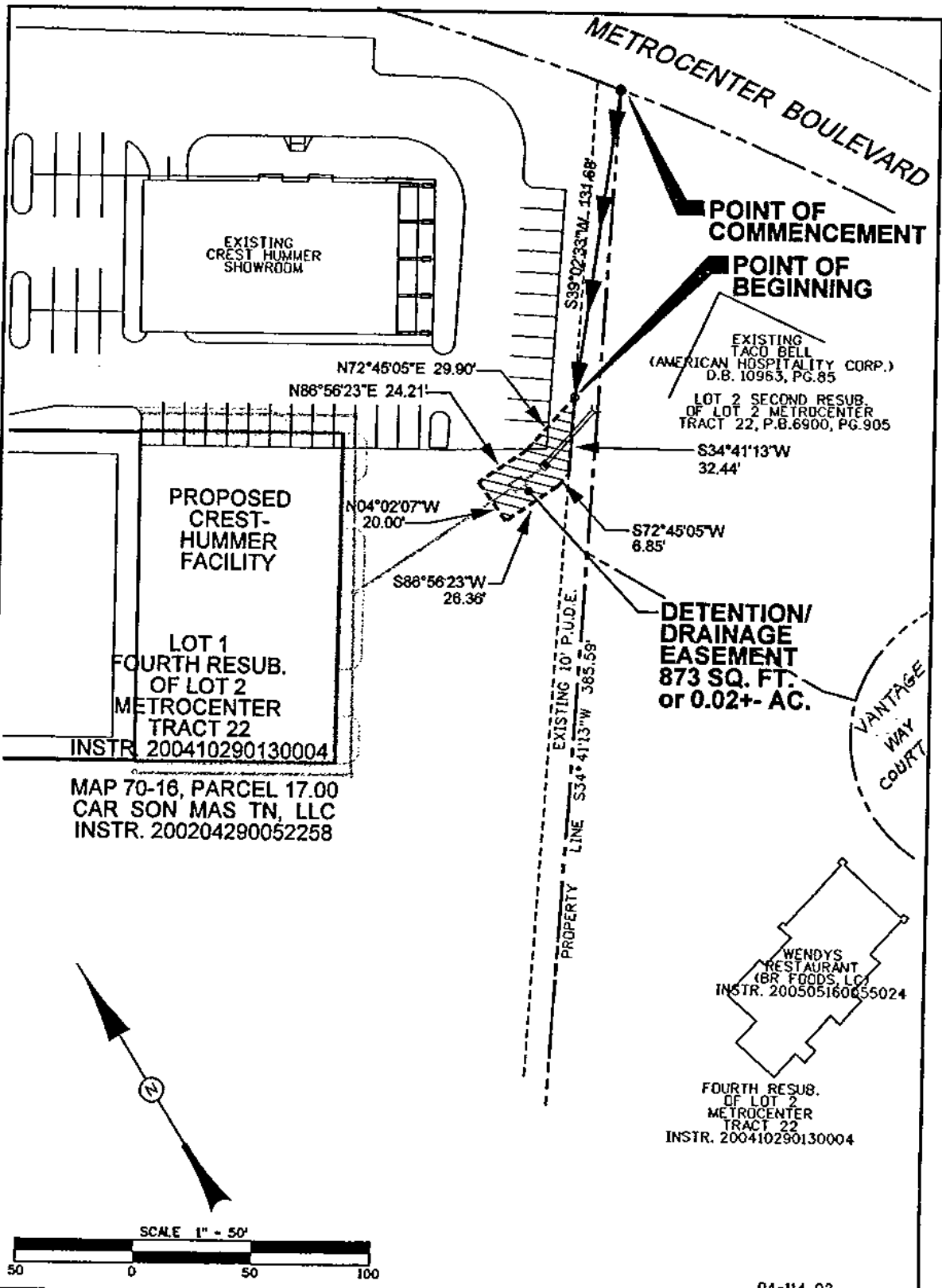
PROJECT NO.	EASEMENT NO. 1-1	BY: BATSON & ASSOCIATES, INC.
MAP NO. 72-5	PARCEL NO. 123	DATE: 27 FEB 2006



LEBANON ROAD (R.O.W. VARIES)
 -ALL 675E 57 12 EB, DATED MAY 6, 1956)

MAP SHOWING
 DEDICATION OF EASEMENT
 TO THE METROPOLITAN GOVERNMENT
 OF NASHVILLE AND DAVIDSON COUNTY,
 TENNESSEE FROM
 Donelson Cedarstone Associates, L.P.

PROJECT NO. 03122	EASEMENT NO. 1	SYSTEM Metro Water Services	
SCALE 1" = 40'	PARCEL NO. Map 96-02/Parcel 8	DATE: 10-10-05	BY: LEC

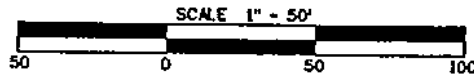
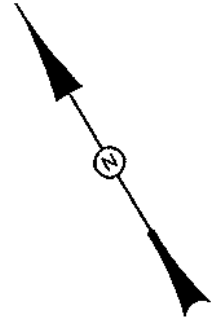


MAP 70-16, PARCEL 17.00
 CAR SON MAS TN, LLC
 INSTR. 200204290052258

INSTR. 200410290130004

FOURTH RESUB.
 OF LOT 2
 METROCENTER
 TRACT 22
 INSTR. 200410290130004

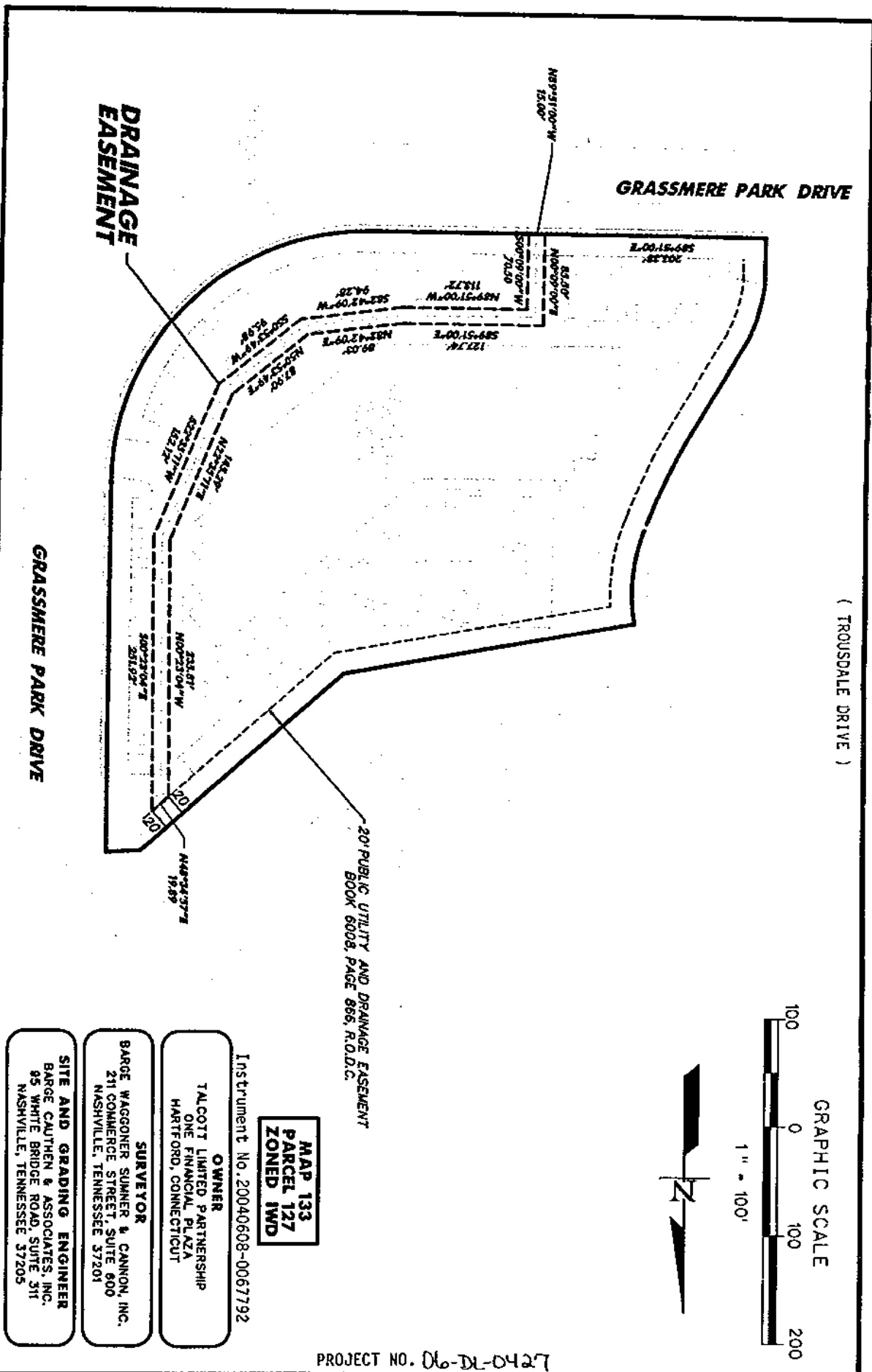
WENDY'S
 RESTAURANT
 (BR. FOODS, L.C.)
 INSTR. 200505160655024



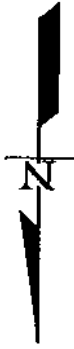
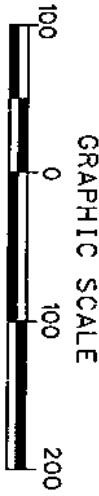
04-114-02

MAP SHOWING
 DEDICATION OF EASEMENT
 GRANTEE
 THE METROPOLITAN GOVERNMENT OF NASHVILLE
 AND DAVIDSON COUNTY, TENNESSEE
 GRANTOR
CAR SON MAS TN, LLC

PROJECT NO. _____	EASEMENT NO. <u>1-1</u>	<u>STORMWATER</u> SYSTEM
SCALE <u>1"=50'</u>	MAP/PARCEL <u>70-16/17.00</u>	DATE <u>FEBRUARY 27, 06</u>
		BY <u>CIVIL SITE DESIGN GROUP, PLLC</u>



(TROUSDALE DRIVE)



20' PUBLIC UTILITY AND DRAINAGE EASEMENT
BOOK 6008, PAGE 866, R.O.D.C.

**MAP 133
PARCEL 127
ZONED IWD**

Instrument No. 20040608-0067792

OWNER
TALCOTT LIMITED PARTNERSHIP
ONE FINANCIAL PLAZA
HARTFORD, CONNECTICUT

SURVEYOR
BARGE WAGGONER SUMNER & CANNON, INC.
211 COMMERCE STREET, SUITE 600
NASHVILLE, TENNESSEE 37201

SITE AND GRADING ENGINEER
BARGE CAUTHEN & ASSOCIATES, INC.
95 WHITE BRIDGE ROAD, SUITE 311
NASHVILLE, TENNESSEE 37205

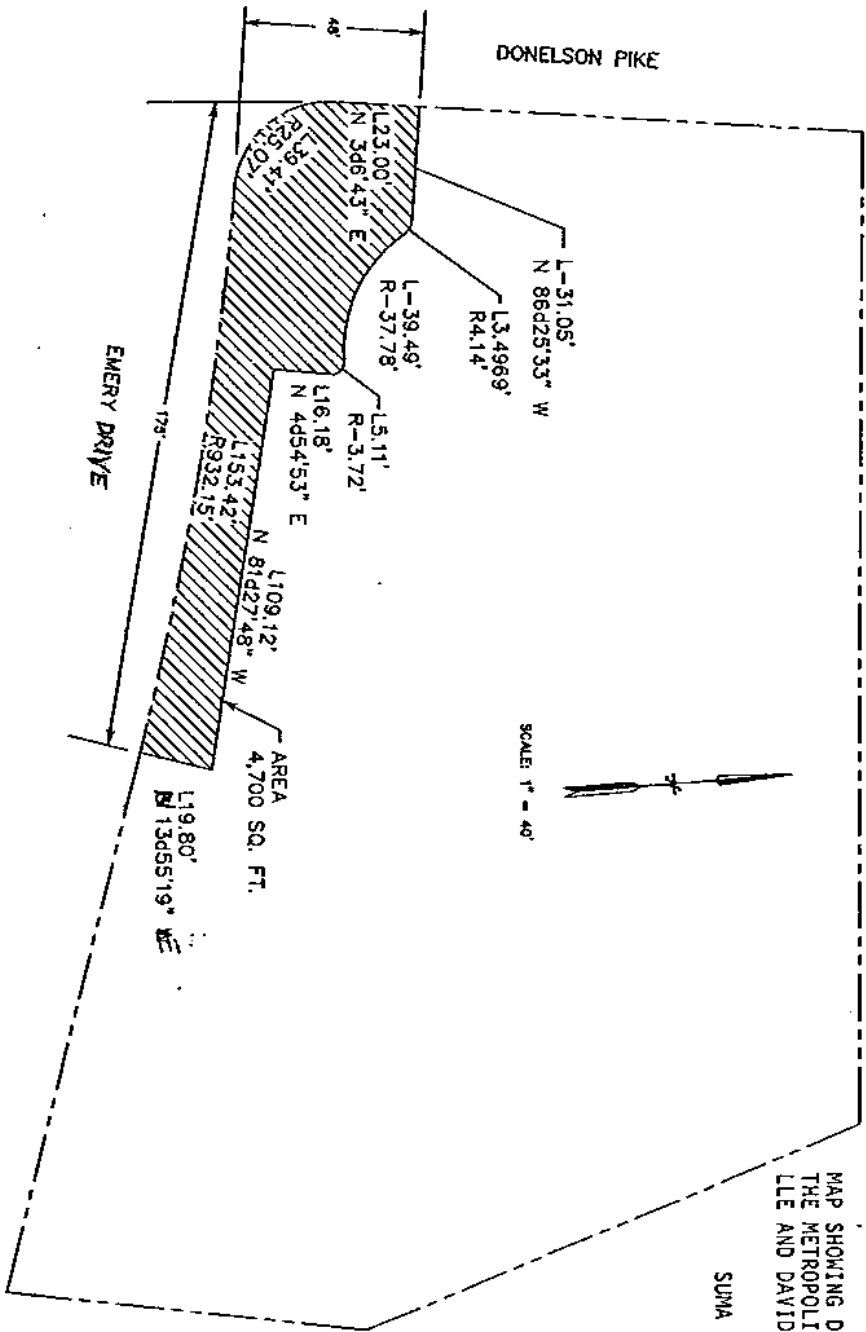
PROJECT NO. 06-DL-0427

BARGE CAUTHEN & ASSOCIATES, INC.
ENGINEERS • PLANNERS • ARCHITECTS
LANDSCAPE ARCHITECTS
95 WHITE BRIDGE ROAD SUITE 311
NASHVILLE, TENNESSEE 37205-1427
(615) 356-9911 (PHONE) (615) 352-6737 (FAX)
BCA JOB NO. 2064-31

EXHIBIT "A"
TALCOTT III
OFFICE BUILDING
695 GRASSMERE PARK DRIVE
NASHVILLE, DAVIDSON COUNTY, TENNESSEE

EASEMENT
NO. 1-1

MAP SHOWING DEDICATION OF EASEMENT TO
THE METROPOLITAN GOVERNMENT OF NASHVILLE
AND DAVIDSON COUNTY, TENNESSEE
FROM
SUMA SRINIVAS



SCALE: 1" = 40'

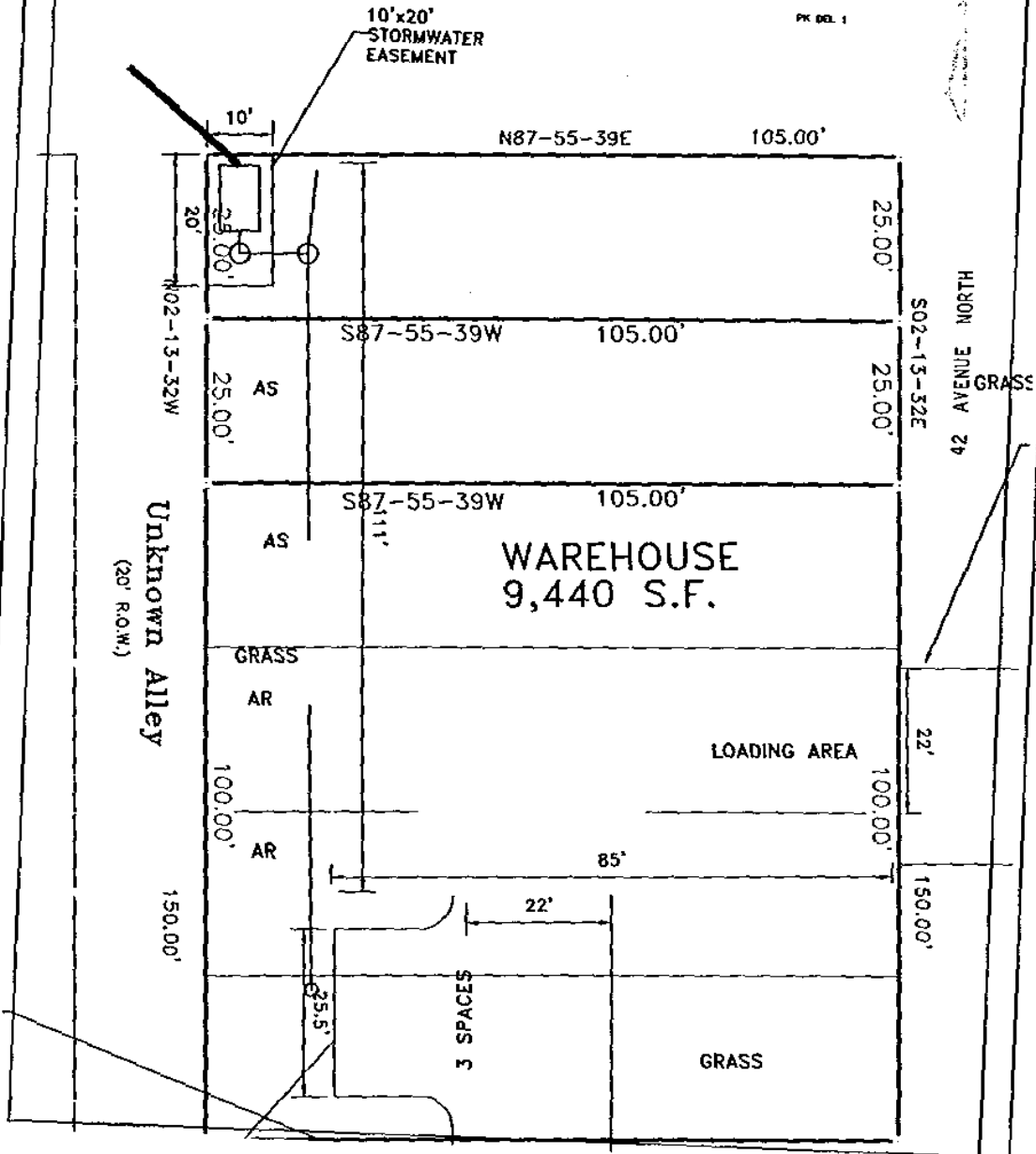
PROJECT NO. DL-DL-NH28, EASEMENT NO. 1-1

LEGEND
 PROPOSED PERMANENT DRAINAGE EASEMENT

EASEMENT PLAN
 SUMA SRINIVAS, OWNER
 TAX MAP 96-9, PARCEL 223
 DEED BOOK 7030, PAGE 986

NOTE
 THIS PLAN IS FOR THE PURPOSE OF IDENTIFYING
 AND SHOWING THE GENERAL LOCATION OF
 CERTAIN PROPERTIES WITH REFERENCE TO PROPOSED
 CONSTRUCTION AND DOES NOT INTEND TO ESTABLISH
 LEGAL BOUNDARIES.

ALABAMA AVENUE



MAP SHOWING
DEDICATION OF EASEMENT
TO THE METROPOLITAN GOVERNMENT
OF NASHVILLE AND DAVIDSON COUNTY,
TENNESSEE FROM
L&L PROPERTIES

06-DL-0429

PROJECT NO. 03175	EASEMENT NO. 1-1	SYSTEM Metro Water Services
SCALE 1" = 20'	PARCEL NO. Map 91-12/Parcel 186	DATE: 02-15-06
		BY: LEC