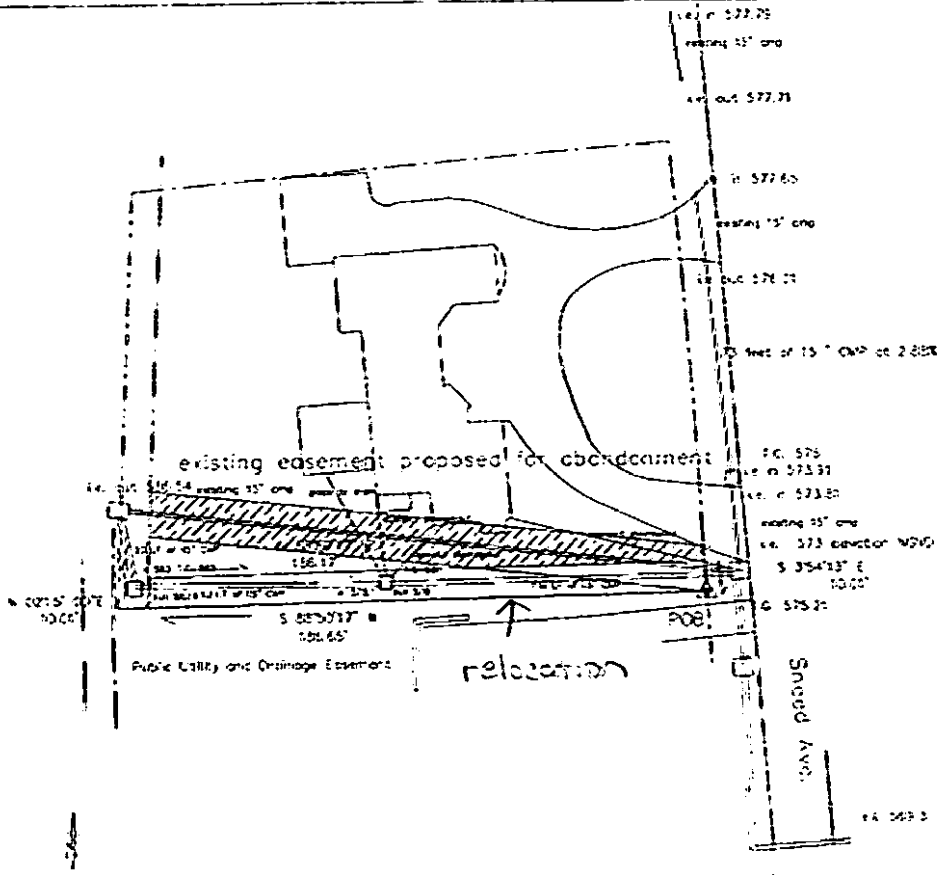


MAP SHOWING
DEDICATION OF EASEMENT
 GRANTEE
 THE METROPOLITAN GOVERNMENT OF NASHVILLE
 AND DAVIDSON COUNTY, TENNESSEE
 GRANTOR
TALCOTT III - GRASSMERE LTD. PARTNERSHIP

PROJECT NO. <u>05-DL-0853</u>	EASEMENT NO. <u>1-1</u>	STORMWATER SYSTEM
SCALE 1"=60'	MAP/PARCEL 132/12	DATE AUGUST 05. 05 BY CIVIL SITE DESIGN GROUP, PLLC



Armstrong

 Engineering
 615-943-0773

4119 Sneed Ave.
 PM 116-16
 PAR 92

Map Showing
 Dedication of Easement
 to the Metropolitan Government of Nashville and Davidson County, Tennessee
 from : Steven G. and Leslie A. Story

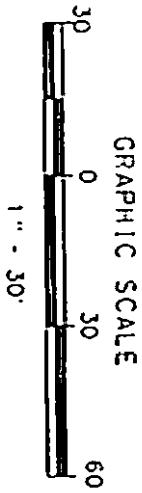
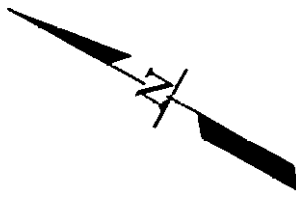
Project No. CS-DL-0360

Attachment
 1 of 1

scale
 1 inch = 50 feet

Stormwater System
 Aug. 19., 2005

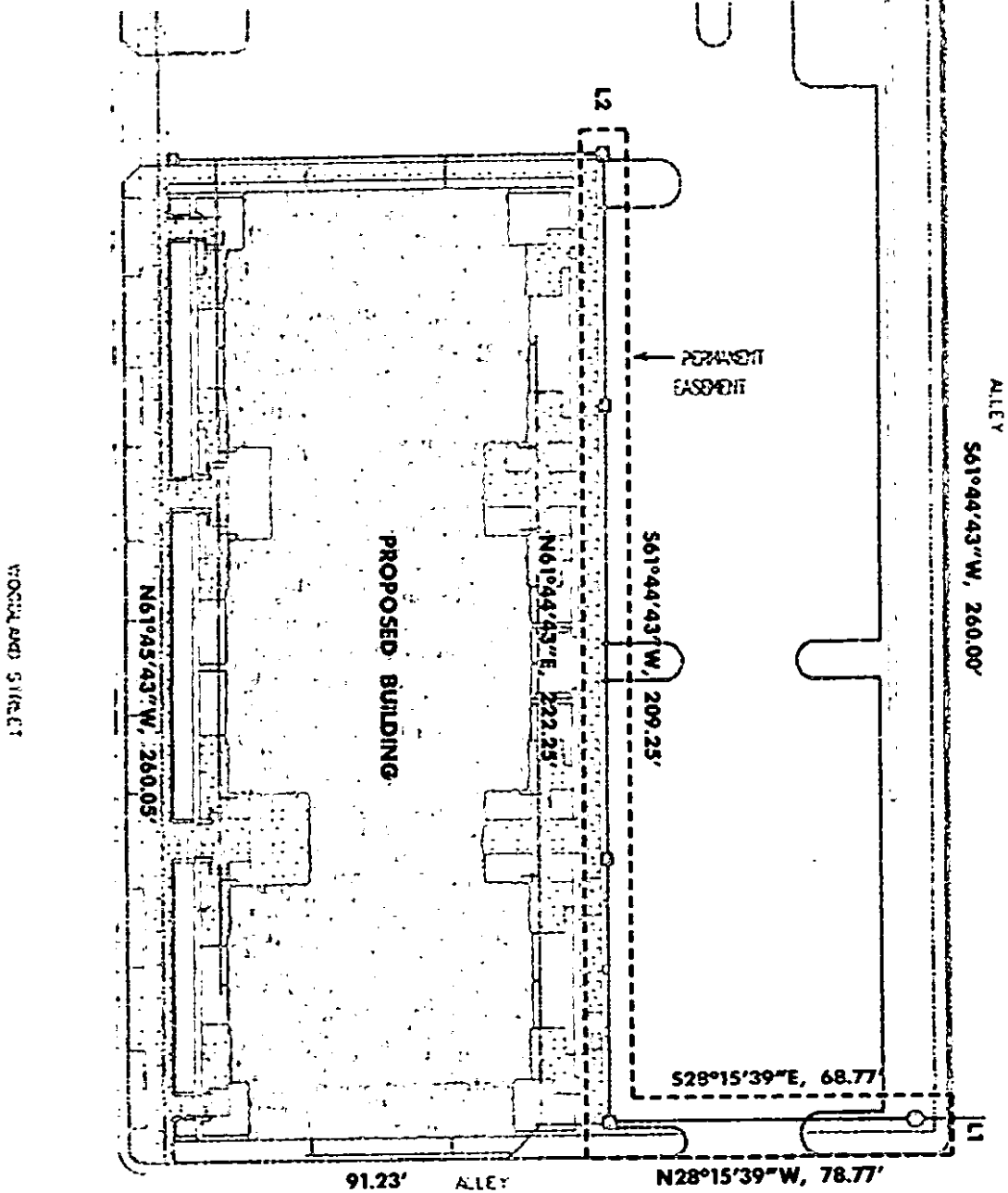
LINE	BEARING	DISTANCE
L1	S61°44'43"W	13.00'
L2	S28°15'39"E	10.00'



DEED BOOK 20061129, -PAGE 0141346
MAP 82-12, PARCEL 373-377

OWNER
FORAY INVESTMENTS
2801 TREVOR DRIVE
MUNTSVILLE, ALABAMA 35802

PREPARED BY
GARG CAUTHEN & ASSOCIATES, INC.
95 WHITE BRIDGE ROAD, SUITE 311
NASHVILLE, TENNESSEE 37205

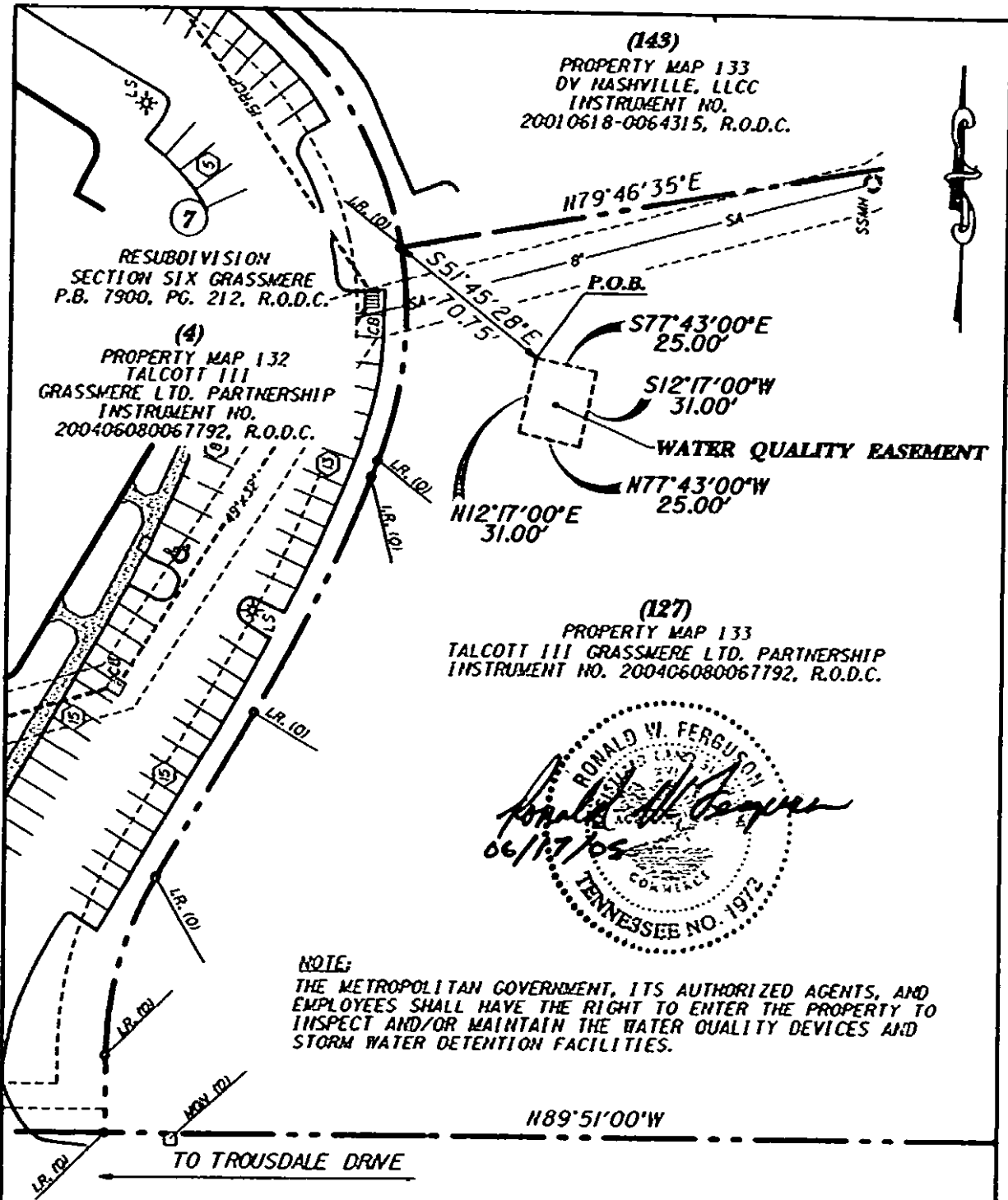


PROJECT NO. 05-01-086

SW2005-193

BARGE CAUTHEN & ASSOCIATES, Inc.
ENGINEERS • PLANNERS • ARCHITECTS
LANDSCAPE ARCHITECTS
95 WHITE BRIDGE ROAD, SUITE 311
NASHVILLE, TENNESSEE 37205-1477
TEL: 615-254-8170 (FAX) TEL: 615-252-6737 (CELL)
ECA JOB NO. 2215-05

EXHIBIT "A"
EAST END LOFTS
926 WOODLAND STREET
NASHVILLE, DAVIDSON COUNTY, TENNESSEE



(143)
 PROPERTY MAP 133
 DV NASHVILLE, LLCC
 INSTRUMENT NO.
 20010618-0064315, R.O.D.C.

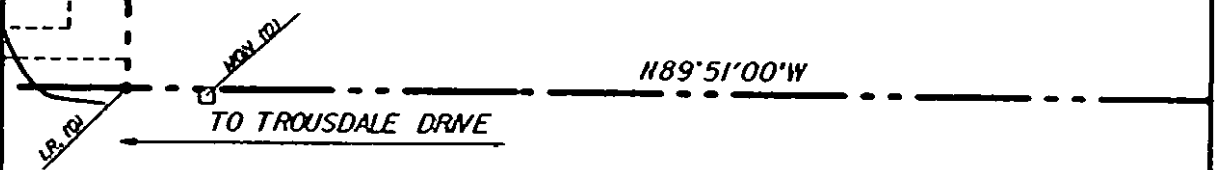
RESUBDIVISION
 SECTION SIX GRASSMERE
 P.B. 7900, PG. 212, R.O.D.C.

(4)
 PROPERTY MAP 132
 TALCOTT III
 GRASSMERE LTD. PARTNERSHIP
 INSTRUMENT NO.
 200406080067792, R.O.D.C.

(127)
 PROPERTY MAP 133
 TALCOTT III GRASSMERE LTD. PARTNERSHIP
 INSTRUMENT NO. 200406080067792, R.O.D.C.



NOTE:
 THE METROPOLITAN GOVERNMENT, ITS AUTHORIZED AGENTS, AND
 EMPLOYEES SHALL HAVE THE RIGHT TO ENTER THE PROPERTY TO
 INSPECT AND/OR MAINTAIN THE WATER QUALITY DEVICES AND
 STORM WATER DETENTION FACILITIES.



GRASSMERE PARK DRIVE

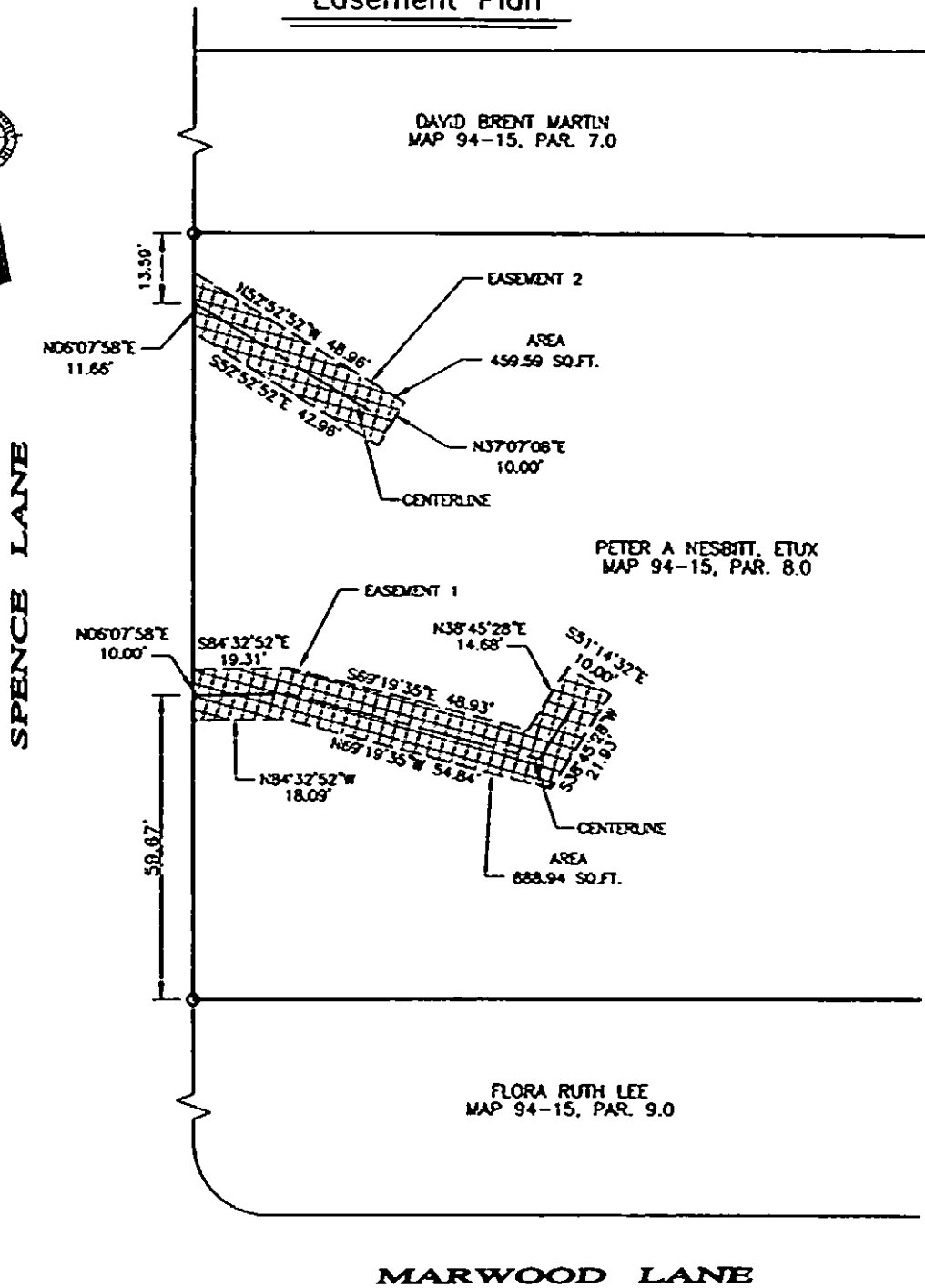
EASEMENT AREA = 775 SQUARE FEET ±



MAP SHOWING
DEDICATION OF EASEMENT
 TO THE METROPOLITAN GOVERNMENT
 OF NASHVILLE AND DAVIDSON COUNTY, TENNESSEE
 FROM
 TALCOTT III GRASSMERE LIMITED PARTNERSHIP

PROJECT NO. 25-DL-08125	EASEMENT NO.	SYSTEM
SCALE: 1"=50'	MAP NO. 133 PARCEL NO. 127	DATE: 06-15-05
		BY: BARGE, WAGGONER, SIBBER AND CANNON, INC.

Easement Plan



Project No. CS-DL-P866

LEGEND



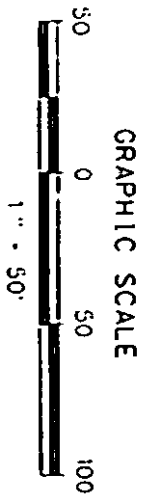
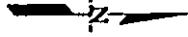
PROPOSED PERMANENT DRAINAGE EASEMENT

NOTE:

This plan is for the purpose of identifying and showing the general location of certain properties with reference to proposed construction and does not intend to establish legal boundaries.

SCALE: 1" = 20'

LINE	BEARING	DISTANCE
L1	N80°43'07"W	14.00'
L2	N09°16'33"E	12.00'
L3	S80°43'07"E	14.00'
L4	S09°16'33"W	12.00'

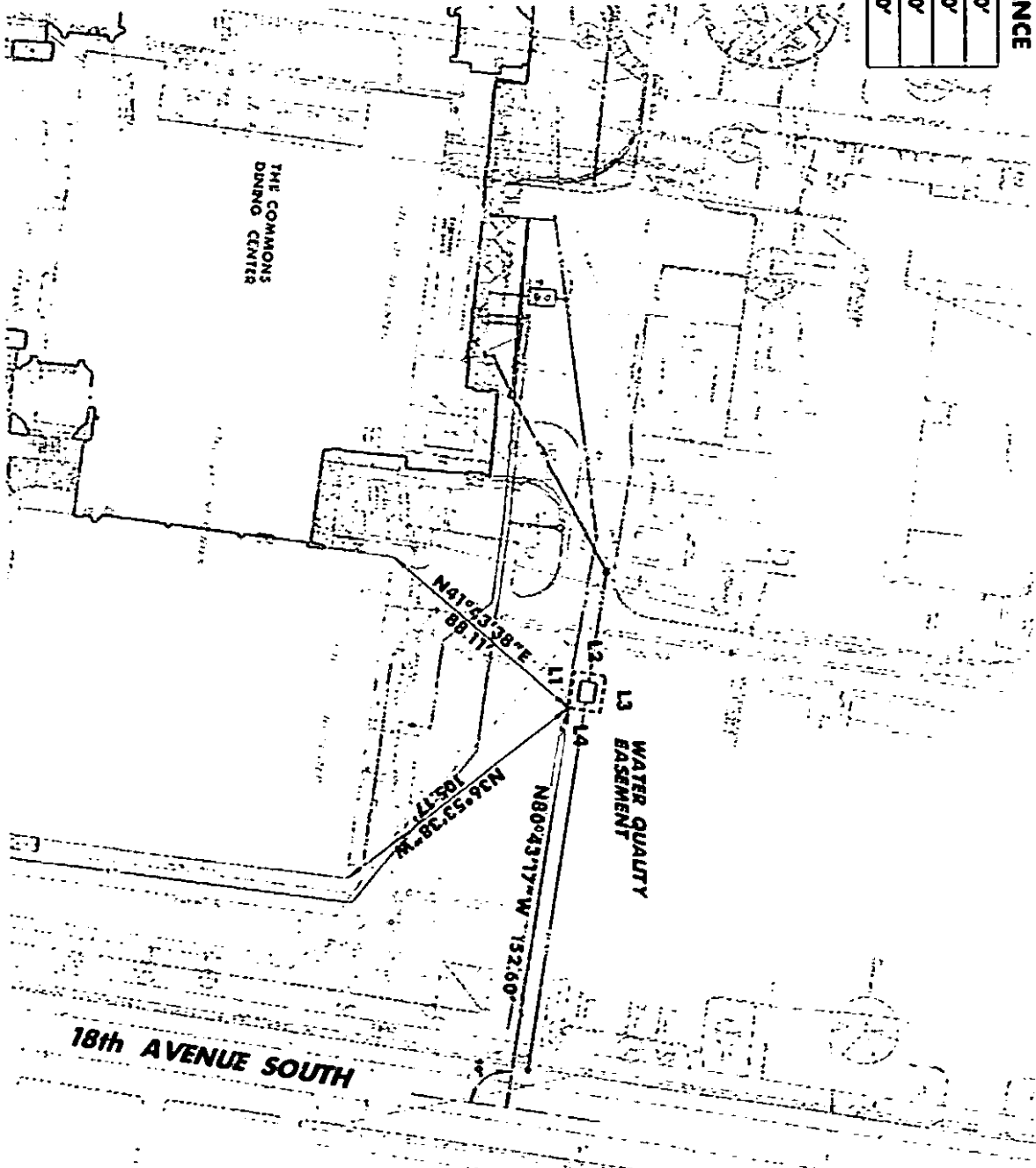


PART OF:
DEED BOOK 5462, PAGE 150
MAP 104-08, PARCEL 196

OWNER
VANDERBILT UNIVERSITY
OFFICE OF CAMPUS PLANNING & CONSTRUCTION
122 BRYAN BUILDING
NASHVILLE, TENNESSEE 37240
CONTACT: TONY FORT 615-322-2715

SITE AND GRADING ENGINEER
GARCE CAUTHEN & ASSOCIATES, INC.
93 WHITE BRIDGE ROAD, SUITE 311
NASHVILLE, TENNESSEE 37203

SURVEY
CHERRY LAND SURVEYING
622 WEST IRIS DRIVE
NASHVILLE, TENNESSEE 37204



PROJECT NO.

BARGE CAUTHEN & ASSOCIATES, INC.
ENGINEERS • PLANNERS • ARCHITECTS
LANDSCAPE ARCHITECTS
93 WHITE BRIDGE ROAD SUITE 311
NASHVILLE, TENNESSEE 37203-4727
615-252-9170 (PHONE) 615-252-4737 (FAX)
BCA JOB NO. 2479-C4

EXHIBIT "A"
THE COMMONS
DINING CENTER
VANDERBILT UNIVERSITY
NASHVILLE, DAVIDSON COUNTY, TENNESSEE

