

CONTRACT NO. 107-14  
THIS PLAT IS THE RESULT OF A SURVEY MADE BY THE SEVENTEENTH DISTRICT OF SEVENTEENTH CIVIL DISTRICT OF SEVENTEENTH COUNCILMANIC DISTRICT OF SEVENTEENTH COUNTY, TENNESSEE, IN ACCORDANCE WITH THE PROVISIONS OF THE CONSTITUTION OF THE STATE OF TENNESSEE AND THE ACTS OF THE GENERAL ASSEMBLY THEREOF. THE PLAT IS THE PROPERTY OF THE SEVENTEENTH DISTRICT OF SEVENTEENTH CIVIL DISTRICT OF SEVENTEENTH COUNCILMANIC DISTRICT OF SEVENTEENTH COUNTY, TENNESSEE, AND IS NOT TO BE REPRODUCED OR COPIED IN ANY MANNER WITHOUT THE WRITTEN CONSENT OF THE SEVENTEENTH DISTRICT OF SEVENTEENTH CIVIL DISTRICT OF SEVENTEENTH COUNCILMANIC DISTRICT OF SEVENTEENTH COUNTY, TENNESSEE.

WALTER L. SCOTT, JR.  
SEVENTEENTH DISTRICT OF SEVENTEENTH CIVIL DISTRICT OF SEVENTEENTH COUNCILMANIC DISTRICT OF SEVENTEENTH COUNTY, TENNESSEE  
PLAT NO. 107-14  
7. 22. 51

SEVENTEENTH DISTRICT OF SEVENTEENTH CIVIL DISTRICT OF SEVENTEENTH COUNCILMANIC DISTRICT OF SEVENTEENTH COUNTY, TENNESSEE  
PLAT NO. 107-14  
7. 22. 51

CONFIDENTIAL LEGAL OPINION  
THIS IS A CONFIDENTIAL LEGAL OPINION. IT IS NOT TO BE REPRODUCED OR COPIED IN ANY MANNER WITHOUT THE WRITTEN CONSENT OF THE SEVENTEENTH DISTRICT OF SEVENTEENTH CIVIL DISTRICT OF SEVENTEENTH COUNCILMANIC DISTRICT OF SEVENTEENTH COUNTY, TENNESSEE.

WALTER L. SCOTT, JR.  
SEVENTEENTH DISTRICT OF SEVENTEENTH CIVIL DISTRICT OF SEVENTEENTH COUNCILMANIC DISTRICT OF SEVENTEENTH COUNTY, TENNESSEE  
PLAT NO. 107-14  
7. 22. 51



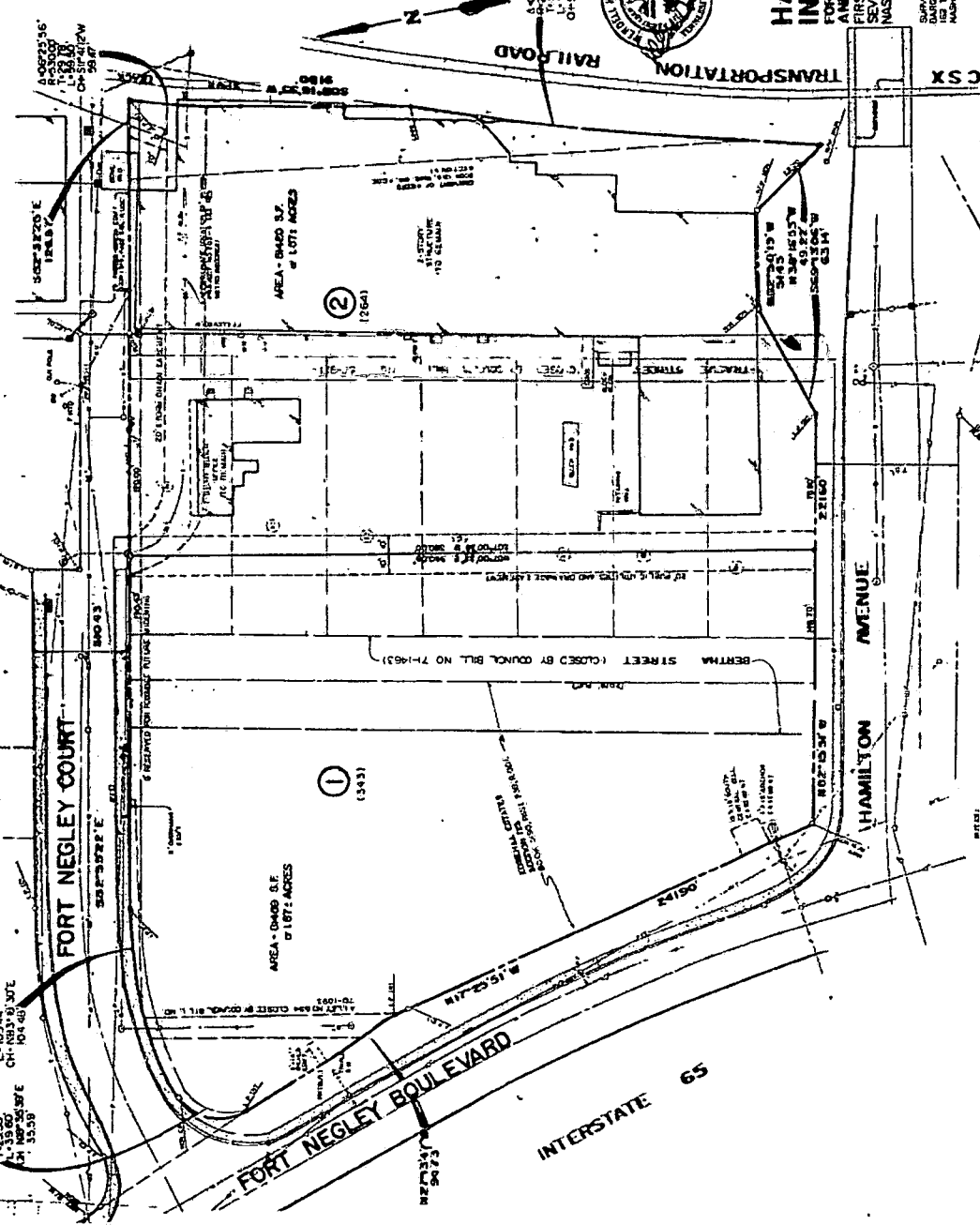
**HAMILTON INDUSTRIAL PARK**  
FORT NEGLEY BOULEVARD  
AND HAMILTON AVENUE  
FIRST CIVIL DISTRICT  
SEVENTEENTH COUNCILMANIC DISTRICT  
NASHVILLE, DAVIDSON COUNTY, TENNESSEE

SURVAYOR  
DAVID L. SCOTT, JR.  
1000 N. 3RD ST.  
NASHVILLE, TENNESSEE 37203

OWNER  
PAN AMERICAN ELECTRIC INC.  
300 SOUTH MAIN ST.  
NASHVILLE, TENNESSEE 37203



PLAT CONTAINS 162,938 SQ. FT. OR 3.74± ACRES



8-25-50-00  
1-53-71  
CH-104-1-107-14  
CH-104-1-107-14  
CH-104-1-107-14

AREA - DAND S.E. OF LOT 1: ACRES

AREA - DAND S.E. OF LOT 2: ACRES

PROPERTY OWNERSHIP BOUNDARY  
PROPERTY BOUNDARY  
EXISTING PROCESSIONS  
STREET CENTER LINES  
STREET RIGHT OF WAY LINES  
STREET CENTER LINES  
STREET RIGHT OF WAY LINES  
STREET CENTER LINES  
STREET RIGHT OF WAY LINES

- 1. BOUNDARY BEARS THE FOLLOWING BEARING AND DISTANCE TO BE DETERMINED BY THE SEVENTEENTH DISTRICT OF SEVENTEENTH CIVIL DISTRICT OF SEVENTEENTH COUNCILMANIC DISTRICT OF SEVENTEENTH COUNTY, TENNESSEE, IN ACCORDANCE WITH THE PROVISIONS OF THE CONSTITUTION OF THE STATE OF TENNESSEE AND THE ACTS OF THE GENERAL ASSEMBLY THEREOF.
- 2. THE BOUNDARY BEARS THE FOLLOWING BEARING AND DISTANCE TO BE DETERMINED BY THE SEVENTEENTH DISTRICT OF SEVENTEENTH CIVIL DISTRICT OF SEVENTEENTH COUNCILMANIC DISTRICT OF SEVENTEENTH COUNTY, TENNESSEE, IN ACCORDANCE WITH THE PROVISIONS OF THE CONSTITUTION OF THE STATE OF TENNESSEE AND THE ACTS OF THE GENERAL ASSEMBLY THEREOF.
- 3. THE BOUNDARY BEARS THE FOLLOWING BEARING AND DISTANCE TO BE DETERMINED BY THE SEVENTEENTH DISTRICT OF SEVENTEENTH CIVIL DISTRICT OF SEVENTEENTH COUNCILMANIC DISTRICT OF SEVENTEENTH COUNTY, TENNESSEE, IN ACCORDANCE WITH THE PROVISIONS OF THE CONSTITUTION OF THE STATE OF TENNESSEE AND THE ACTS OF THE GENERAL ASSEMBLY THEREOF.

PROPERTY OWNED BY DISTRICT OF SEVENTEENTH CIVIL DISTRICT OF SEVENTEENTH COUNCILMANIC DISTRICT OF SEVENTEENTH COUNTY, TENNESSEE